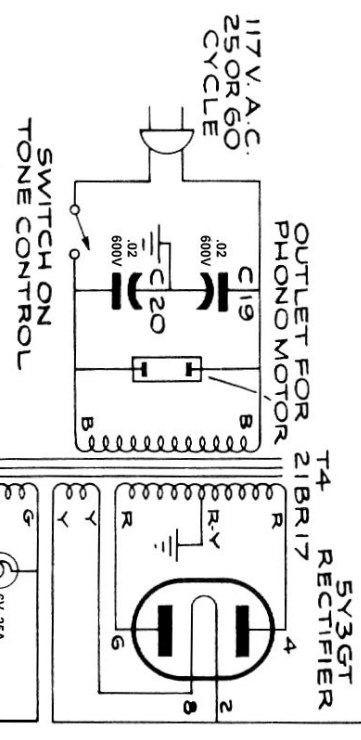
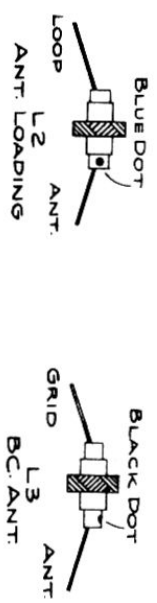
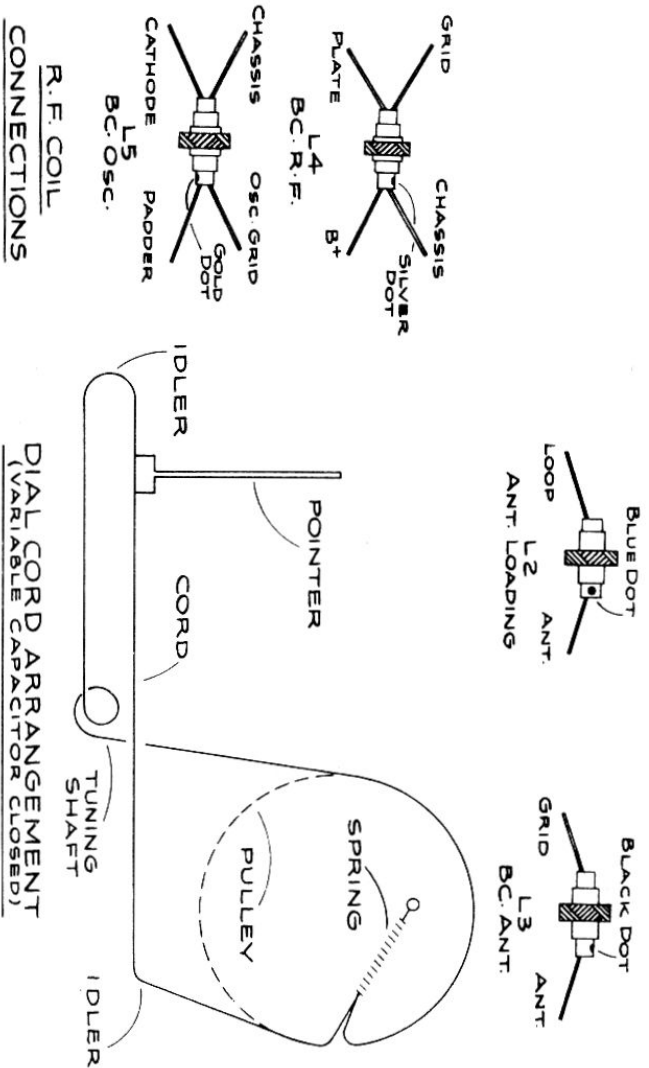


# Sparton 7250 A.C. Receiver





# Sparton 7250

## ELECTRICAL ALIGNMENT

- I.F. 455 Kcs. Connect Sig. Gen. at 455 Kcs. to R.F. stator lug C1 (center section)(Use .01 isolating cap.) and chassis, dial at 1500 Kcs. Adjust I.F. transformers, at top and bottom, doing T2 - L9, L8 then T1 - L7, L6 for maximum output.
- B/C 1500 and 600 Kcs. Phono-Raddo switch on B/C.
  - Connect Sig. Gen. to Ant. stator lug C1 (rear section) and chassis, dial at 1500 Kcs. peak C4, C3. Dial and Sig. Gen. at 600 Kcs. rock dial adjusting C5 for max. sig. Retrim C4, C3 at 1500 Kcs.
  - Connect Sig. Gen. to Ant. (using 200 MMF Dummy Ant. in series) and Gnd. terminals, dial at 1500 Kcs. peak C2.

