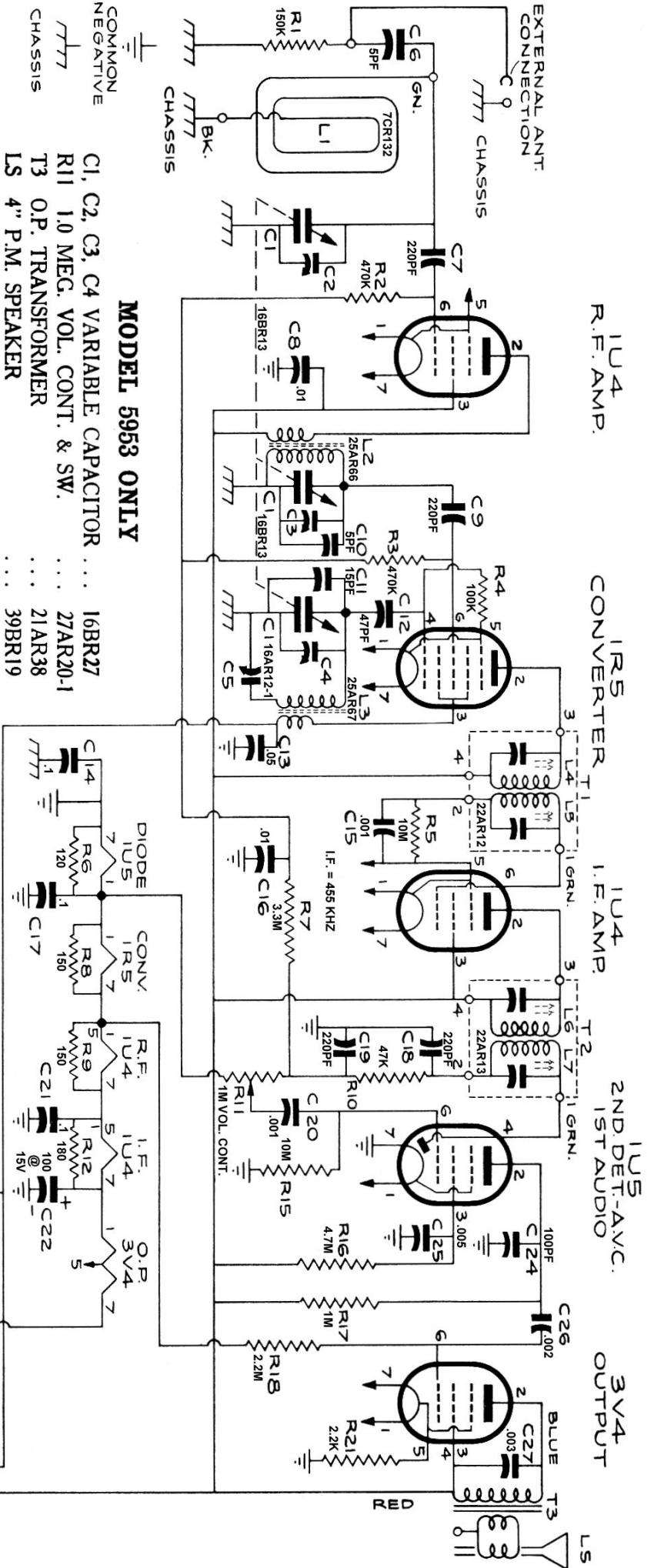
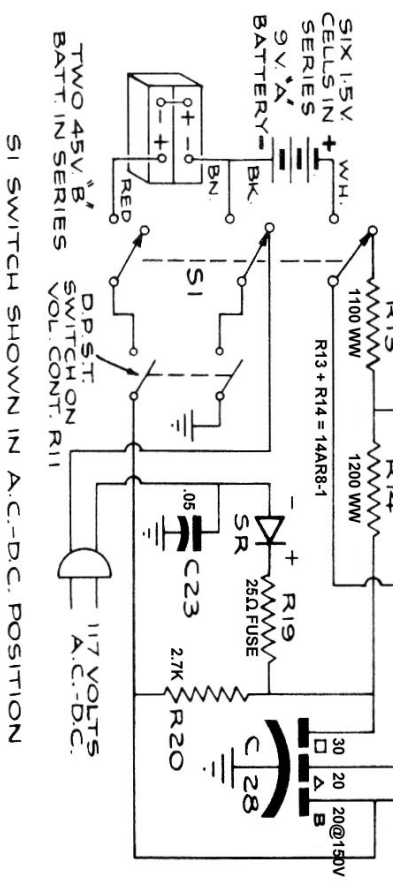


Sparton 5950, 5951 & 5953 "Hiker" AC/DC & Battery Receiver

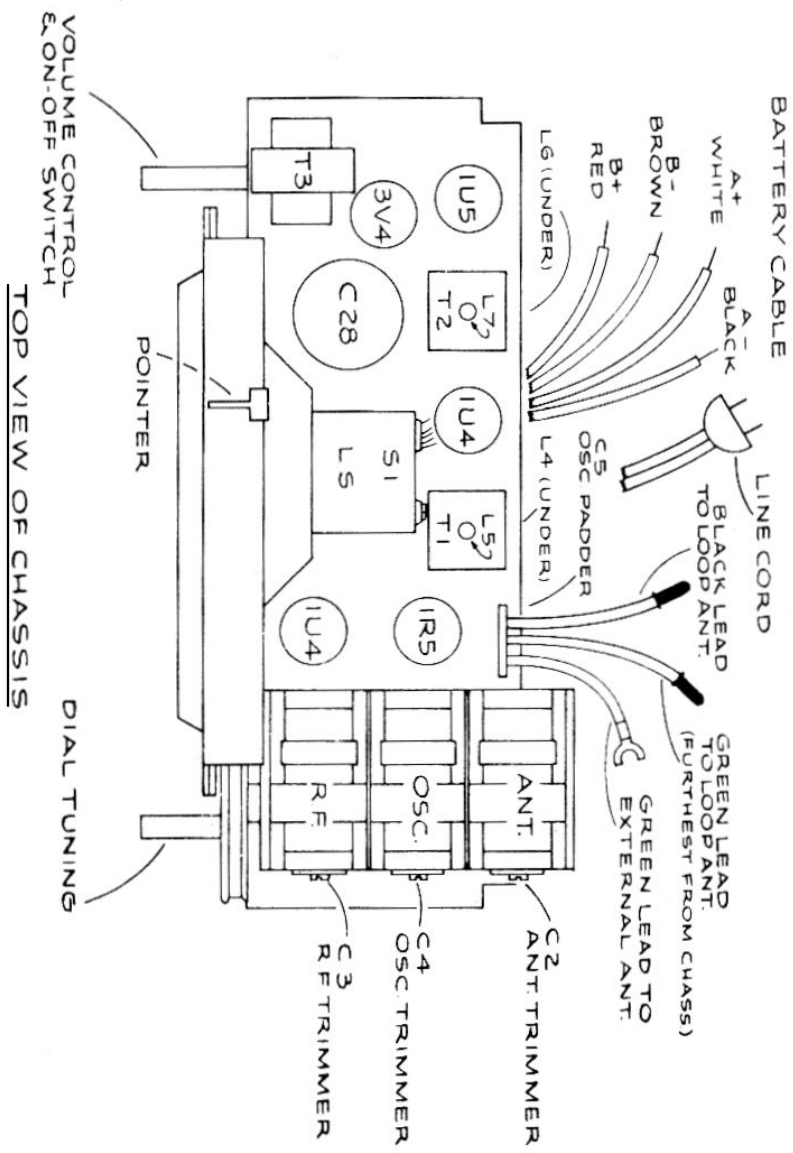


MODEL 5953 ONLY

- C1, C2, C3, C4 VARIABLE CAPACITOR ... 16BR27
- R11 1.0 MEG. VOL. CONT. & SW. ... 27AR20-1
- T3 O.P. TRANSFORMER ... 21AR38
- LS 4" P.M. SPEAKER ... 39BR19



Sparton 5950, 5951 & 5953 "Hiker" AC/DC & Battery Operated Receiver



ELECTRICAL ALIGNMENT

- Connect Signal Generator at 455 Kcs. to stator lug C3 and chassis, dial at 1500 Kcs. With batteries out of cabinet on their leads adjust I.F. transformers with insulated screw driver through holes in bottom of chassis pan and top of I.F. cans; doing T2, L7-L6, then T1, L5-L4 for maximum output.
- Connect Signal Generator at 1500 Kcs. to stator lug C2 and chassis. Dial at 1500 Kcs. adjust C4 (Osc.) and C3 (R.F.) for maximum signal. Signal Generator at 600 Kcs. rock dial at 600 Kcs. and adjust padder C5 in rear of chassis for maximum signal. Reset at 1500 Kcs. and retrim C3 and C4.
- With case closed, connect Signal Generator at 1500 Kcs. to radiating loop (6 to 8 turns insulated wire 6 inches in diameter.) Place near rear of case. Dial at 1500 kcs. adjust C2 for maximum signal through rear hole in right side of case.

