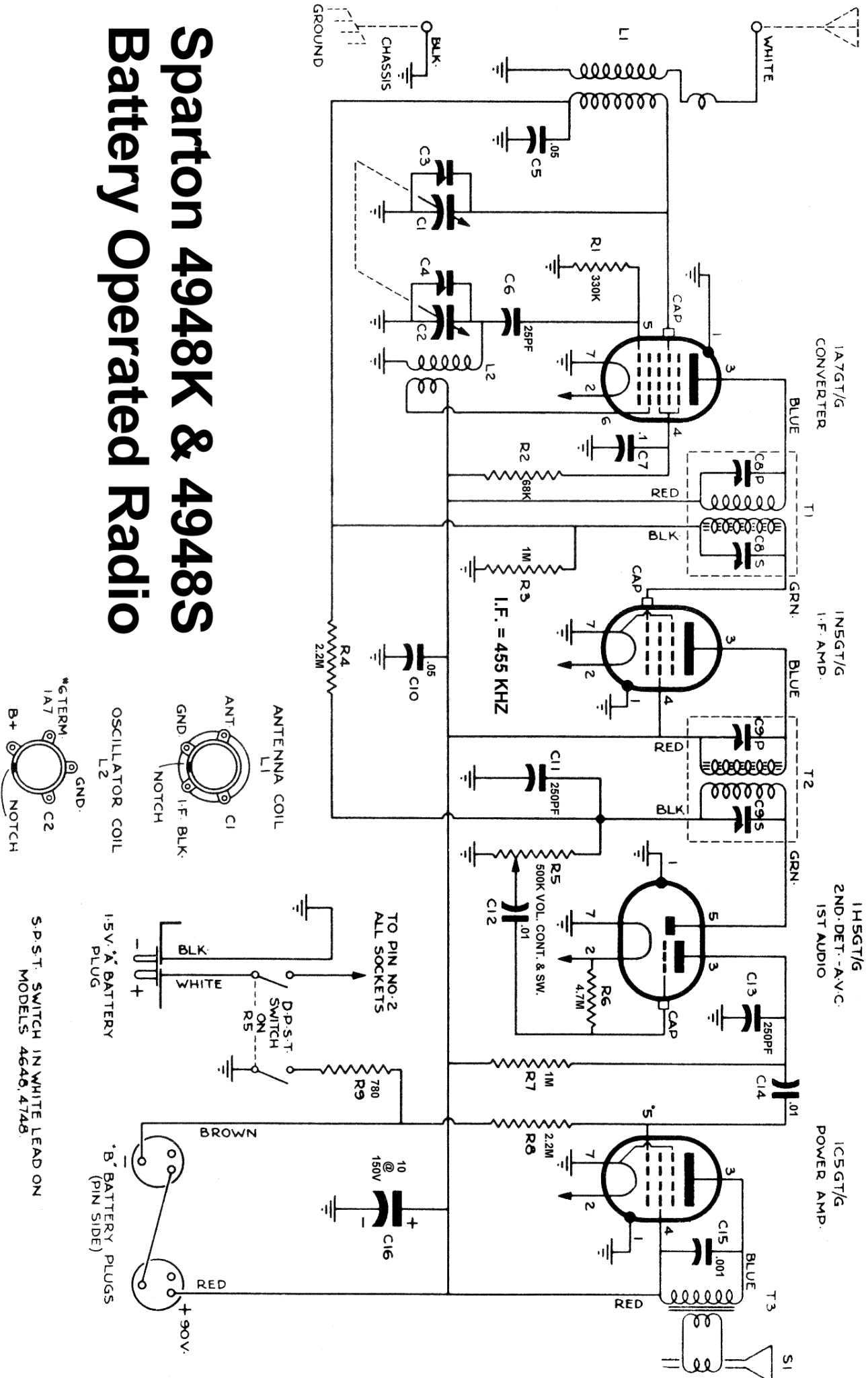
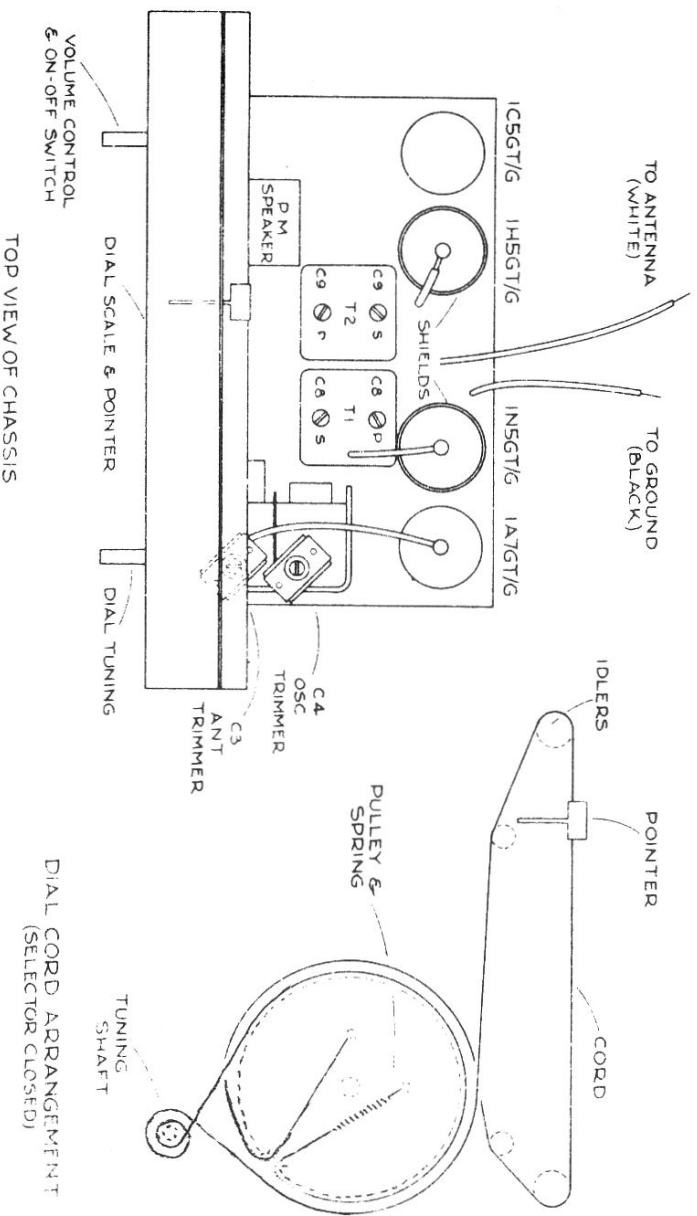


Sparton 4948K & 4948S Battery Operated Radio



Sparton 4948K 4948S Battery Operated Receiver



ELECTRICAL ALIGNMENT

- Adjust Signal Generator to 455 Kcs and connect to Antenna Post and Chassis. Dial at 1500 Kcs.
- Adjust I.F. Trimmer C9S and C9P on I.F. Transformer T2 for maximum output; then adjust Trimmer C8S and C8P on I.F. T1 for maximum output, using setting giving least regeneration and best tone quality.
- Adjust Signal Generator to 1500 Kc., Dial to 1500 Kc and adjust Trimmer C4 on V. Capacitor to bring Oscillator to 1500 Kcs.
- Adjust Trimmer C3 to maximum signal with Signal Generator connected to Ant. Terminal at 1500 Kc.
- Note: Above adjustments must be made with Base Plate on bottom of chassis.