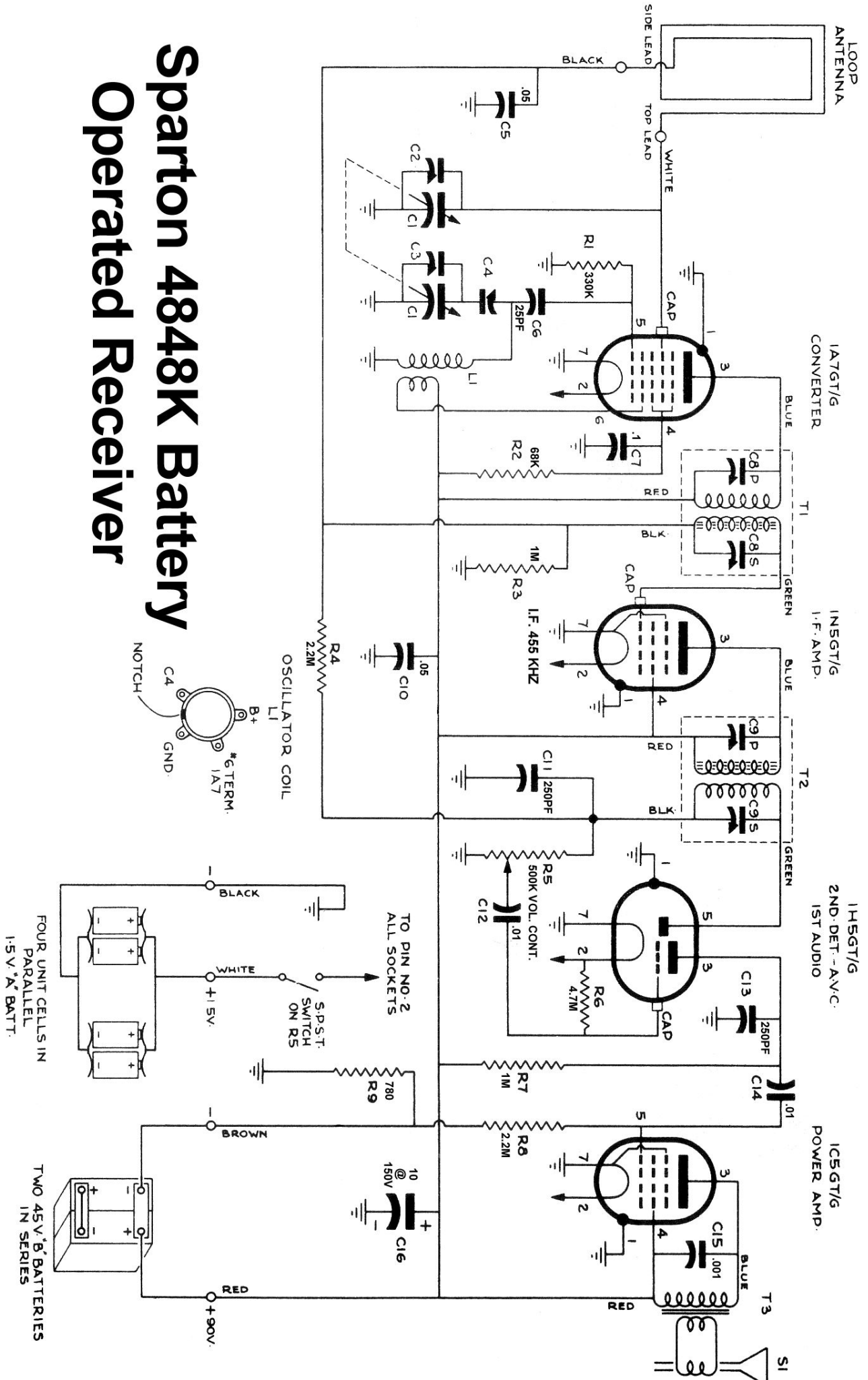
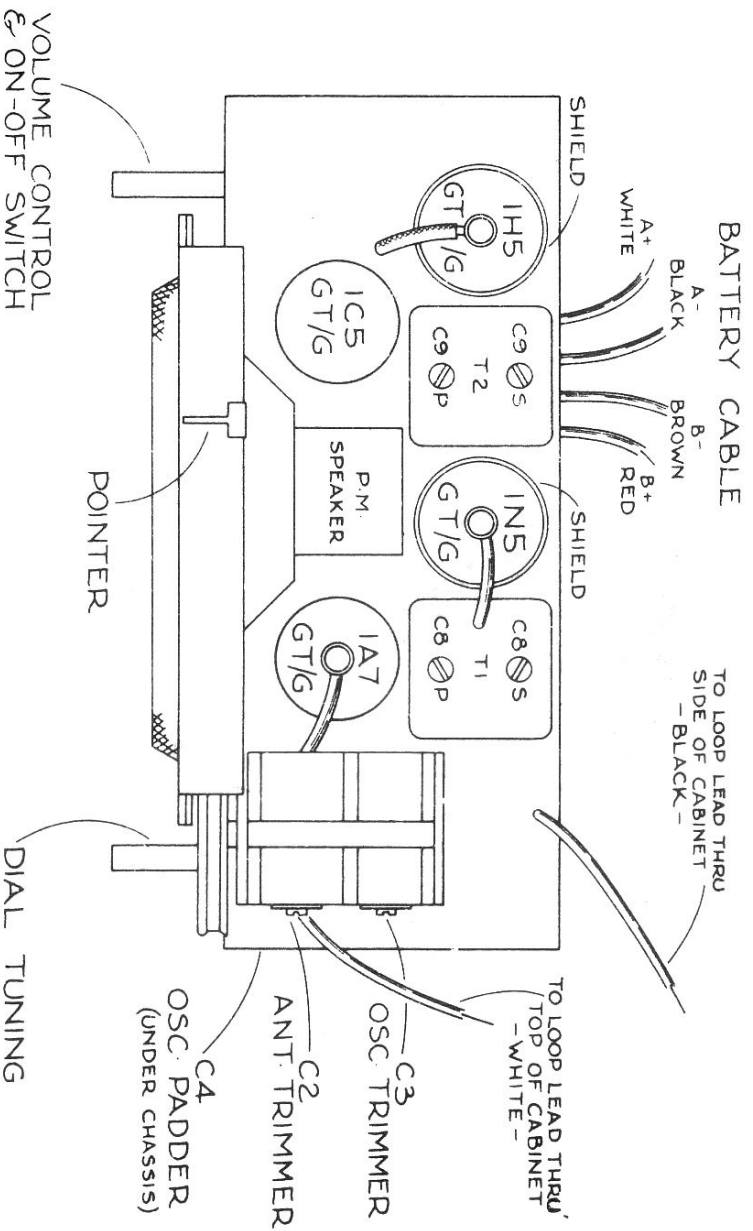


# Sparton 4848K Battery Operated Receiver

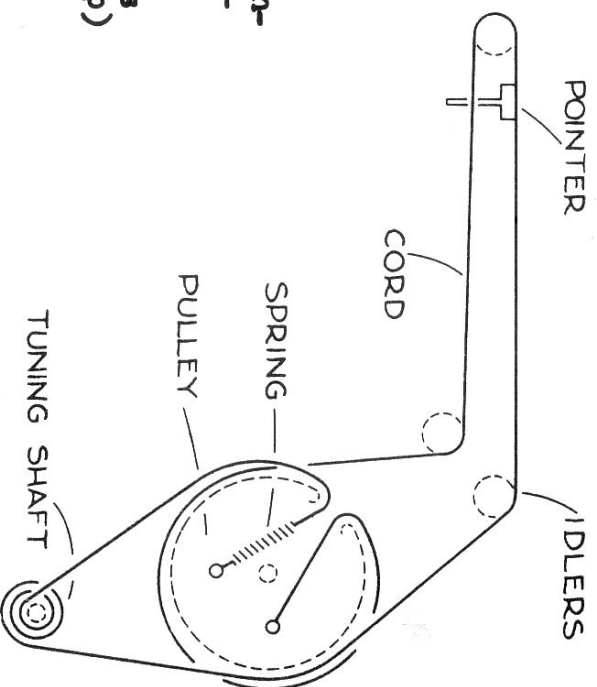


# Sparton 4848K Battery Operated Receiver



## ELECTRICAL ALIGNMENT

- Adjust Signal Generator to 455 Kcs. and connect to terminal strip inside upper corner of cabinet (white wire) through a .01 MFD. condenser and ground generator to chassis. Dial at 1500 Kcs. - Adjust I.F. Trimmers C9S, C9P on T<sub>2</sub> and C8S, C8P on T<sub>1</sub> for maximum output.
- Couple Sig. Generator to loop antenna in cabinet by means of 2 turns of wire, wrapped around front of cabinet (in front of handle and strap) and connected to generator. Set Sig. Generator to 1500, dial to 1500 Kcs. and adjust trimmer C<sub>3</sub> for oscillator frequency adjustment (remove two chassis mtg. screws from rear of chassis, knobs, and slide chassis out of cabinet to reach C<sub>3</sub>) push back in to check dial. Adjust C<sub>4</sub> padder at 535 Kc. or starting point on dial (plates in), recheck at 1500 Kc. for calibration and C<sub>3</sub>. Insert chassis and replace screws and knobs, adjust trimmer C<sub>2</sub> for maximum output at 1500 Kc.



DIAL CORD ARRANGEMENT  
(FRONT VIEW - SELECTOR CLOSED)