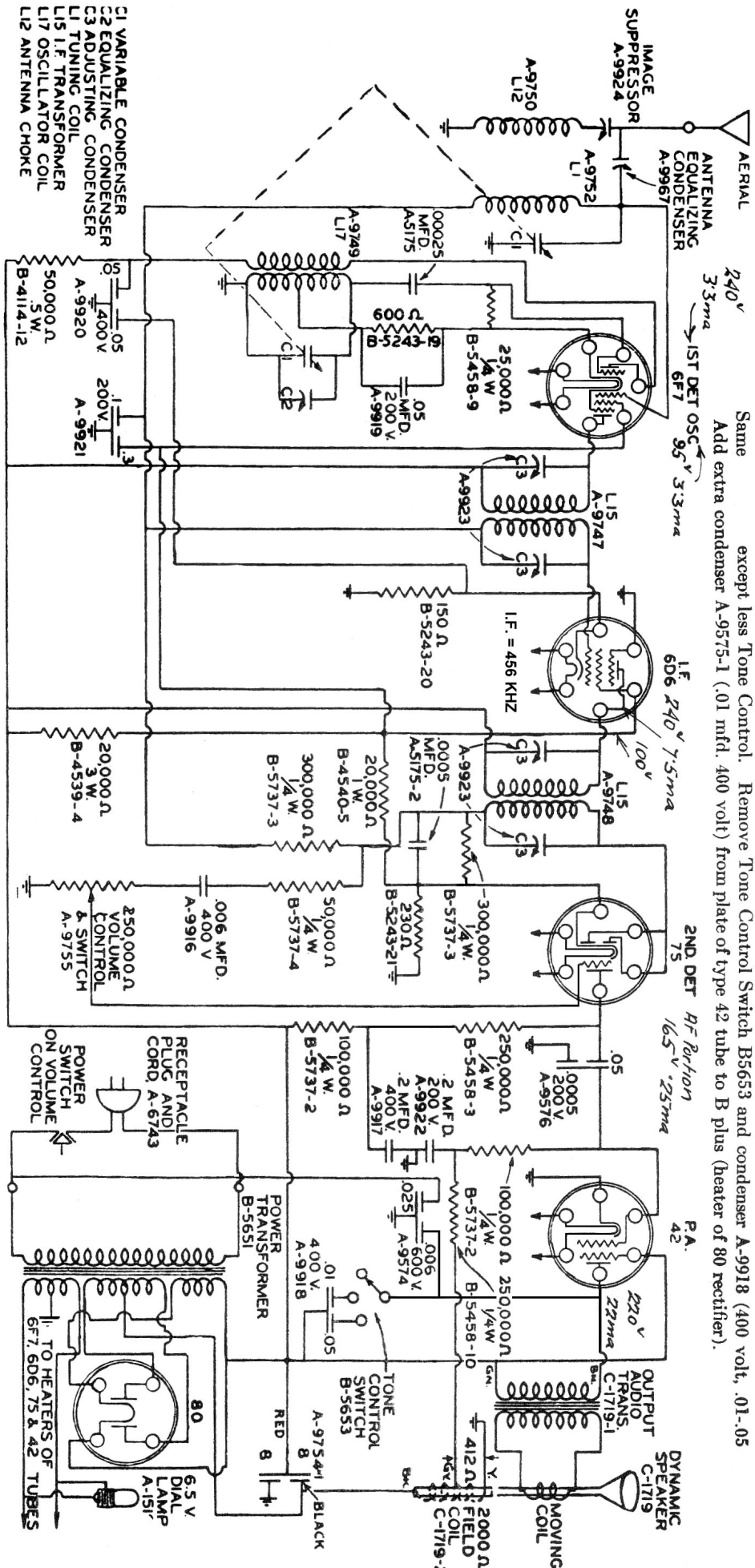
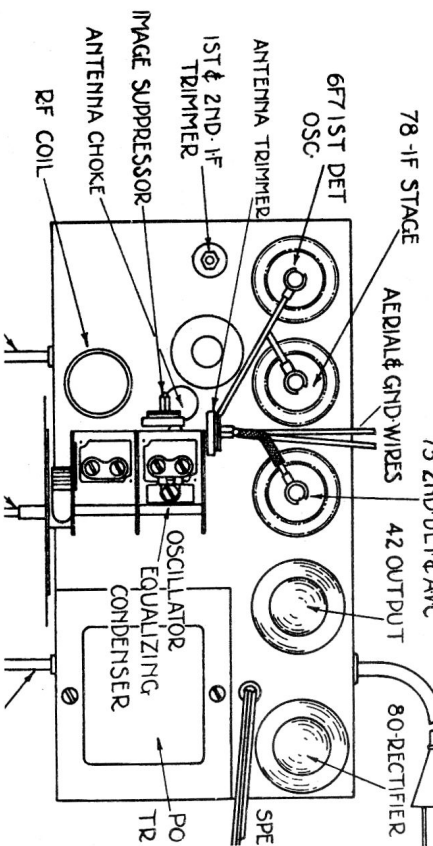


# Sparton Model 251, 252



NOTE—Type 6D6 tube replaceable with type 78 tube. Regular production includes both tubes.



## ALIGNMENT PROCEDURE

### Models 252 and 251 Chassis

1. Attach output meter to voice coil of speaker. Adjust 1st and 2nd I.F. Trimmers to maximum output meter reading with oscillator set at 456 K.C. and fed into the grid of the type 6F7 1st Detector-Oscillator tube.
2. Leaving oscillator set at 456 K.C., feed the signal into the antenna suppressor and adjust the Image Suppressor (See Fig. 1) to a minimum speaker output.
3. Set oscillator to exactly 1500 K. C. and adjust the Oscillator Equalizing Condenser (See Fig. 1) so that when the set is tuned to the 1500 K.C. signal the dial pointer reads exactly 1500.
4. Adjust the Antenna Compensator (See Fig. 1) to the same signal with the receiver set at 1500, for the greatest output meter reading. If necessary the plates of the R.F. section of the gang condenser may be bent slightly at 900 and 600 K.C. positions to increase the sensitivity at those frequencies.