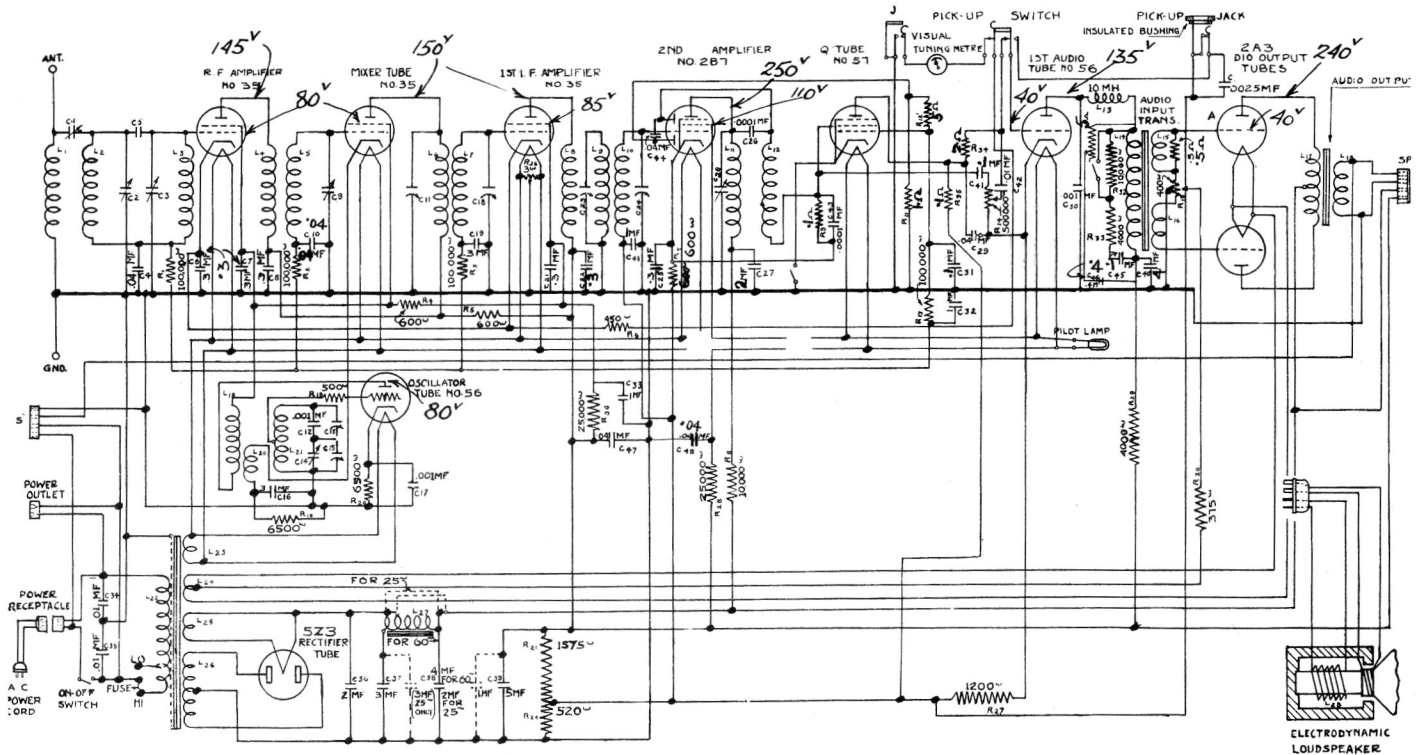


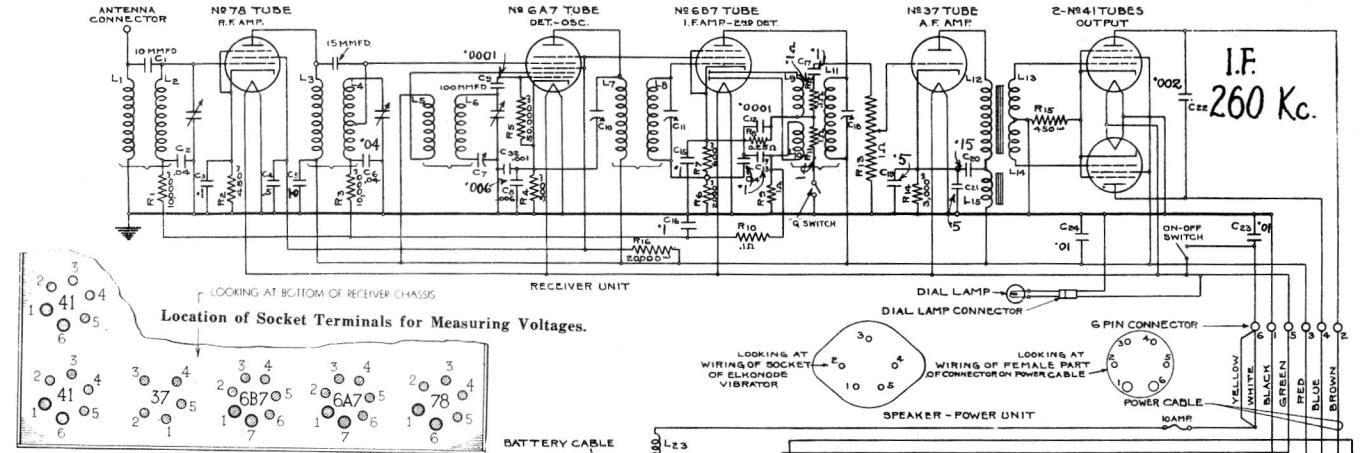
The Intermediate Amplifier circuits are aligned on oscillographs to obtain the proper shape of resonance curves having "steep" sides to get proper selectivity and fidelity. "Peak" methods of alignment (with oscillator and meter) do not give the desired curve, as it may be broad and unsymmetrical although a high peak is indicated. The adjustment of these circuits is very stable as shown by field experience and Proving Division tests. Therefore, as these adjustments cannot be duplicated exactly without the oscillograph equipment, it is recommended that the I. F. circuits never be adjusted by a service man.

This applies to all late Models.

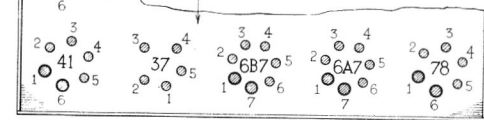
Model 42. 1932-33 IF 175 Kc



Model 33a. 1934-35 *Note. Model 33 (1933-34) practically same.*



Location of Socket Terminals for Measuring Voltages.



Terminals of Sockets						
Tube	1	2	3	4	5	6
No. 78	-6.1	+187	+81	+2.9	2.9	0
No. 6A7	-6.1	+187	+81	+187	-2	-3.6
				Scale	250	
No. 6B7	-6.1	+187	+81	+3	0	+12
				Scale	100	
No. 37	0	+166	0	+11	-6.1	-
No. 41	0	+184	+187	0	+14.5	-6.1

PRINTED IN CANADA

DATA SHEET

COURTESY
STROMBERG-CARLSON 13
TELEPHONE MFG. CO. LTD.