

### ALIGNMENT PROCEDURE

Operation Steps	Connections to Receiver	Frequency	Band Switch	Tuning Capacitor	See Notes	Adjust in stated order for Maximum Output
1	To ILC5 Control grid (6) through .05 mf. capacitor	455 kc.	Pos. 2	Min.		2nd I.F. Trimmers C24-C23
2	To Stator of C1 through .05 mf. capacitor	455 kc.	Pos. 2	Min.	A	1st I.F. Trimmers C16-C15
3	To Antenna Contact through 100 mmf. capacitor*	1600 kc.	Pos. 2	1600 kc.		B.C. Osc. Trimmer C12 B.C. Ant. Trimmer C10
4	To Antenna Contact through 100 mmf. capacitor*	600 kc.	Pos. 2	600 kc.	B	B.C. Osc. Padder C14
5	To Antenna Contact through a 400 ohm Resistor*	17 Mc.	Pos. 3	17 Mc.	C	S.W. Osc. Trimmer C11 S.W. Ant. Trimmer C9
6	To Antenna Contact through a 400 ohm Resistor*	6 Mc.	Pos. 3	6 Mc.	D	S.W. Osc. Padder C8 S.W. Ant. Coil T1 (adjust loop position)

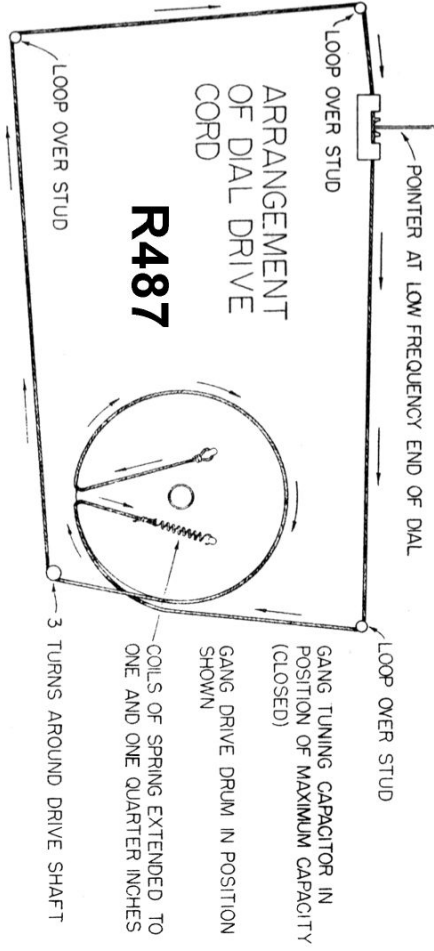
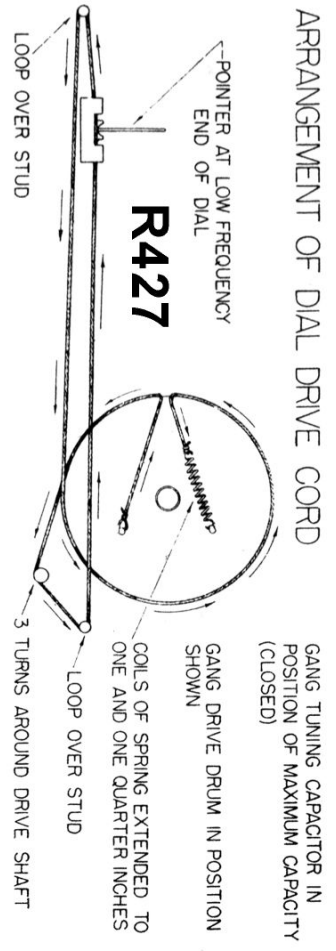
\* = or a Standard dummy antenna with a 200 mmf. condenser in series.

Note A: After completing operation No. 2, carefully readjust C24-C23 for maximum output.

Note B: After completing operation No. 4, return to 1600 kc. and repeat operation No. 3, then repeat operation No. 4.

Note C: Unscrew S.W. Oscillator Trimmer C11 approximately 2 turns from tight. Then turn adjustment clockwise until first output peak is obtained. Make adjustments using this peak.

Note D: Adjust the position of the loop with a non-metallic rod. Return to 17 Mc. and rock the gang tuning capacitor slowly back and forth while adjusting the S.W. Antenna Trimmer C9 for maximum output.



### Rogers Majestic R427 & R487 De Forest D827 & D887

Pin	TUBE SOCKET VOLTAGES				
	ILC6	ILC5	ILD5	ILB4 (1)	ILB4 (2)
1	1.4	1.4	1.4	1.4	1.4
2	82	82	28	80	80
3	47	41	20	82	82
4	—	0	—	—	—
5	32	0	—	—	—
6	—	—	—	—	—
7	—	82	82	—	—
8	0	0	0	82	82

All voltages measured to the chassis with a 20,000 ohms-per-volt meter, with no signal applied to the receiver.

All voltages are D.C. positive except where noted.

Test voltages = 90 volts (B) and 1.4 volts (A), Direct Current.

\* Measurable with a vacuum tube voltmeter only.