

Item #	Name or Description	Part No.
R1	Variable Resistor	33301
R2	50,000 Ohm V.C.	12852
R3	50,000 Ohm T.C.	12853
R4	Graphite Resistor	33302

Item #	Name or Description	Part No.
C1	Variable AF	13139
C2	570 mf. Gang	13139
C3	Variable Mic	13139

Item #	Name or Description	Part No.
C4	Ant. S.W.P. Pad.	13139
C5	Ant. P.C.P. Pad.	13139
C6	Ant. B.C.P. Pad.	13139

Item #	Name or Description	Part No.
C7	Osc. B.C.S. Pad.	4036
C8	Osc. S.W.P. Pad.	13140
C9	Osc. P.C.P. Pad.	13140
C10	Osc. B.C.P. Pad.	13140

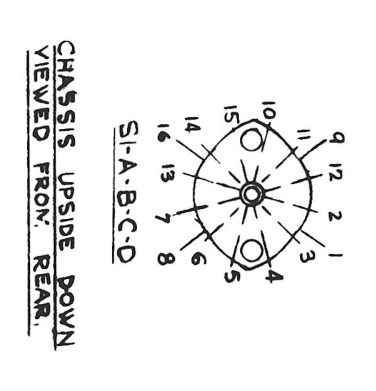
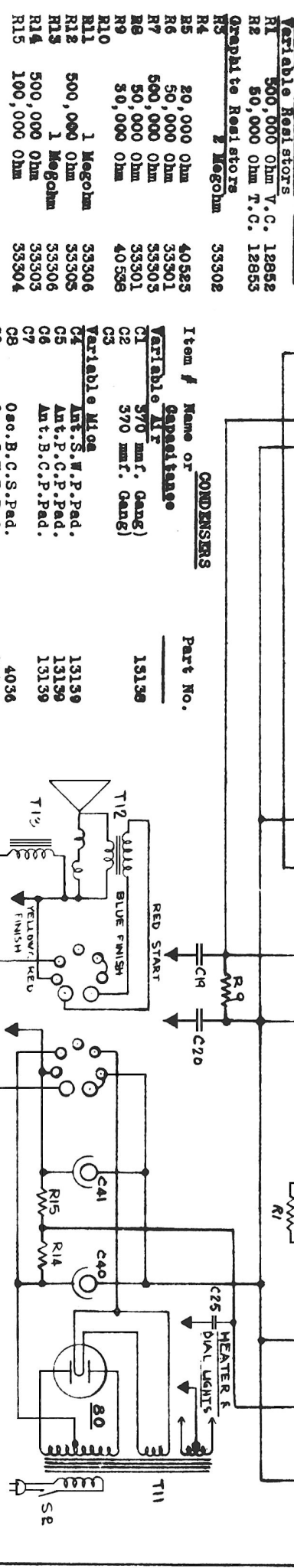
Item #	Name or Description	Part No.
C11	1st I.F. Pad.	13140
C12	1st I.F. Pad.	13140
C13	2nd I.F. Pad.	13140
C14	2nd I.F. Pad.	13140
C15	Neutralizing	13140

Item #	Name or Description	Part No.
C16	0.1 mf. 200 V.	38106
C17	0.1 mf. 200 V.	38106
C18	0.1 mf. 400 V.	38106
C19	0.05 mf. 400 V.	38112
C20	0.05 mf. 400 V.	38112
C21	0.05 mf. 400 V.	38112
C22	0.005mf. 600 V.	38110
C23	0.05 mf. 600 V.	38111
C24	0.25 mf. 200 V.	38107

Item #	Name or Description	Part No.
R5	Ant. S.W.P. Pad.	13139
R6	Ant. P.C.P. Pad.	13139
R7	Ant. B.C.P. Pad.	13139
R8	Osc. B.C.S. Pad.	4036
R9	Osc. S.W.P. Pad.	13140
R10	Osc. P.C.P. Pad.	13140
R11	Osc. B.C.P. Pad.	13140

Item #	Name or Description	Part No.
R12	1st I.F. Pad.	13140
R13	1st I.F. Pad.	13140
R14	2nd I.F. Pad.	13140
R15	2nd I.F. Pad.	13140

Item #	Name or Description	Part No.
T1	Power Transformer	33301
T2	Detector Transformer	33301
T3	AF Transformer	33301
T4	AF Transformer	33301
T5	AF Transformer	33301
T6	AF Transformer	33301
T7	AF Transformer	33301
T8	AF Transformer	33301
T9	AF Transformer	33301
T10	AF Transformer	33301
T11	Speaker Transformer	33301
T12	60V Filament Transformer	33301



Item #	Name or Description	Part No.
C16	0.1 mf. 200 V.	38106
C17	0.1 mf. 200 V.	38106
C18	0.1 mf. 400 V.	38106
C19	0.05 mf. 400 V.	38112
C20	0.05 mf. 400 V.	38112
C21	0.05 mf. 400 V.	38112
C22	0.005mf. 600 V.	38110
C23	0.05 mf. 600 V.	38111
C24	0.25 mf. 200 V.	38107

Item #	Name or Description	Part No.
R5	Ant. S.W.P. Pad.	13139
R6	Ant. P.C.P. Pad.	13139
R7	Ant. B.C.P. Pad.	13139
R8	Osc. B.C.S. Pad.	4036
R9	Osc. S.W.P. Pad.	13140
R10	Osc. P.C.P. Pad.	13140
R11	Osc. B.C.P. Pad.	13140

Item #	Name or Description	Part No.
R12	1st I.F. Pad.	13140
R13	1st I.F. Pad.	13140
R14	2nd I.F. Pad.	13140
R15	2nd I.F. Pad.	13140

Item #	Name or Description	Part No.
C25	1,000mf. Electrolytic	34125
C31	200mf. Electrolytic	37905
C32	200mf. Electrolytic	37905
C33	200mf. Electrolytic	37905
C34	200mf. Electrolytic	37905
C35	4,000mf. Electrolytic	34124
C36	1,720mf. Electrolytic	34123
C37	200mf. Electrolytic	37905
C38	200mf. Electrolytic	37905
C39	200mf. Electrolytic	37905
C40	25 mf. Electrolytic	39011
C41	16 mf. Electrolytic	13177

Item #	Name or Description	Part No.
R16	Ant. S.W.P. Pad.	13139
R17	Ant. P.C.P. Pad.	13139
R18	Ant. B.C.P. Pad.	13139
R19	Osc. B.C.S. Pad.	4036
R20	Osc. S.W.P. Pad.	13140
R21	Osc. P.C.P. Pad.	13140
R22	Osc. B.C.P. Pad.	13140

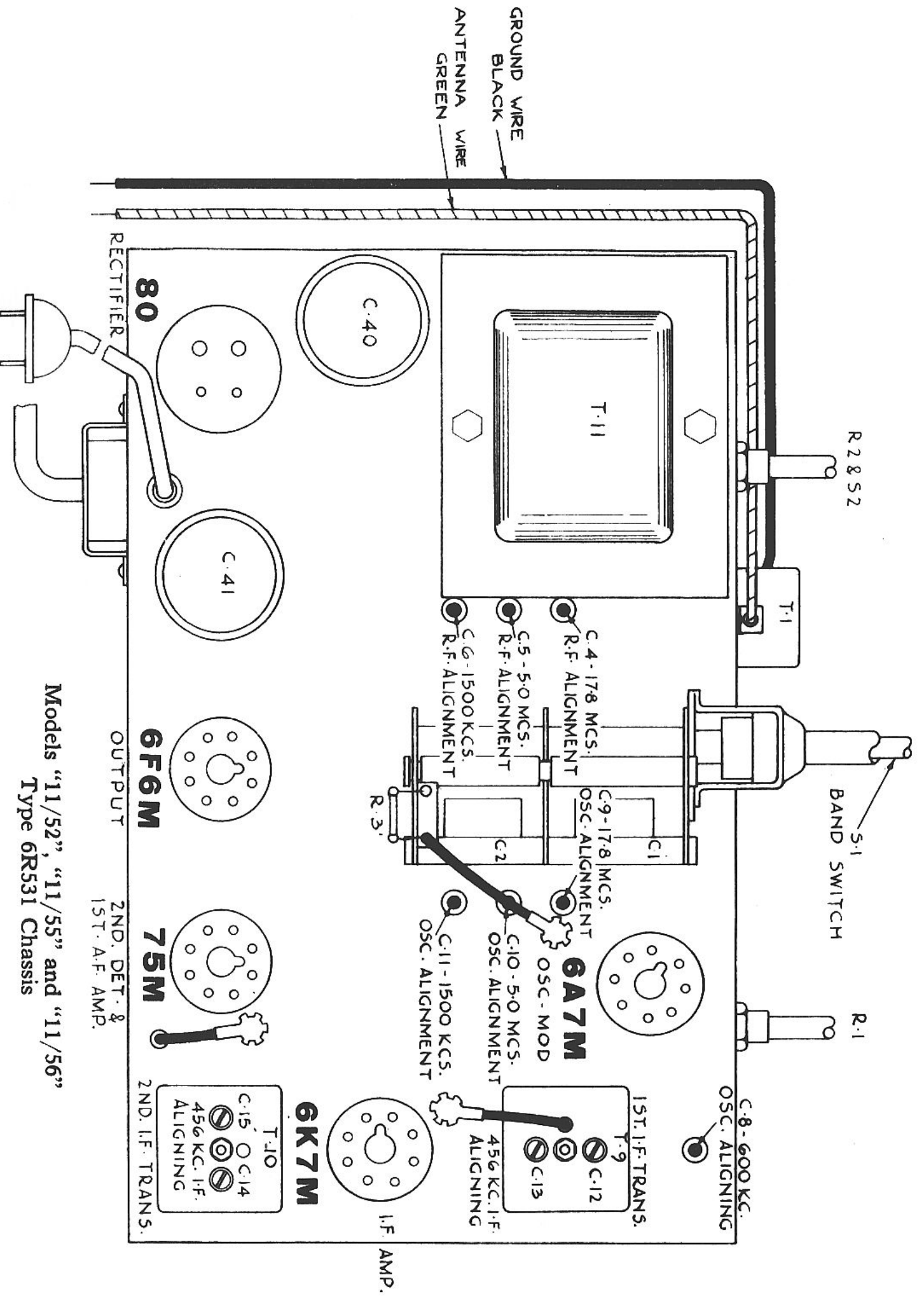
Item #	Name or Description	Part No.
R23	1st I.F. Pad.	13140
R24	1st I.F. Pad.	13140
R25	2nd I.F. Pad.	13140
R26	2nd I.F. Pad.	13140

Item #	Name or Description	Part No.
T1	Power Transformer	33301
T2	Detector Transformer	33301
T3	AF Transformer	33301
T4	AF Transformer	33301
T5	AF Transformer	33301
T6	AF Transformer	33301
T7	AF Transformer	33301
T8	AF Transformer	33301
T9	AF Transformer	33301
T10	AF Transformer	33301
T11	Speaker Transformer	33301
T12	60V Filament Transformer	33301

Item #	Name or Description	Part No.
S1	Speaker	33301
F1	Fuse	33301
S2	Switch	33301

Rogers Models 11/52, 11/55, 11/56
(Chassis 6R531)

CHASSIS UPSIDE DOWN
VIEWED FROM REAR.



Models "11/52", "11/55" and "11/56"
 Type 6R531 Chassis

Rogers Alignment see "ROGERS MULTI-BAND AC & BATTERY RECEIVER ALIGNMENT"