

RESISTORS

Item #	Resistance	Part #
R1	1 Megohm V.C.	13682
R2	4 Megohm	33324
R3	150,000 Ohms	33323
R4	1 Megohm	33306
R5	1 Megohm	33306
R6	100,000 Ohms	33304
R7	500,000 Ohms	33303
R8	2,500 Ohms	40549

CONDENSERS

Item #	Capacitance	Part #
C1	365 mfd. (Gang)	13671
C2	303 mfd. (Gang)	
C3	.05 mfd. 200 V. Tub.	38102
C4	.002 mfd. 400 V. Tub.	38136
C5	.1 mfd. 200 V. Tub.	38106
C6	.1 mfd. 200 V. Tub.	38106
C7	.000200 mfd. 750 V. Mica	37905
C8	.000200 mfd. 750 V. Mica	37905
C9	.000200 mfd. 750 V. Mica	37905
C10	.005 mfd. 600 V. Tub.	38110
C11	8 mfd. 250 V. Electro	13691
C12	8 mfd. 250 V. Electro	13691
C13	Aligning Condenser	13677
C14	Aligning Condenser	13677
C15	8 mfd. 250 V. Electro.	13728

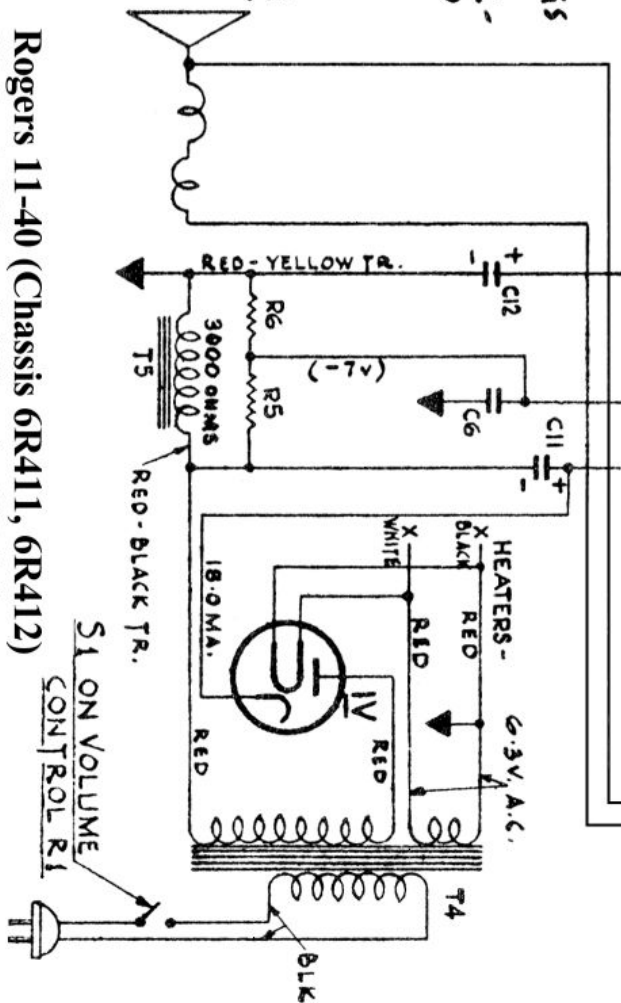
COILS, ETC.

Item #	Name	Part #
T1	Int. Trans. Assem.	5498
T2	Interstage Trans. Ass.	5501
T3	Output Trans. On Speaker	5512
T4	Power Trans.	5512
T5	Speaker	5504

NOTE - ALL VOLTAGE READINGS ARE BETWEEN CHASSIS AND POINTS SHOWN UNLESS OTHERWISE INDICATED. VOLTMETER TO BE 1,000 OHMS PER VOLT OR BETTER. VOLUME CONTROL SET FOR MINIMUM. * VALUES OF RESISTANCE IN CIRCUIT DO NOT PERMIT OF ACCURATE READING. USE PLATE CURRENT AS INDICATION OF CORRECT PLATE OR GRID VOLTAGE.

PRIMARY WATTS
 110 VOLTS 25 CYCLES - 22
 110 " 60 " - 20

Rogers 11-40 (Chassis 6R411, 6R412)
 Majestic "Scout" (Chassis 6M411)
 De Forest Crosley "Aries" (Chassis 6D411)



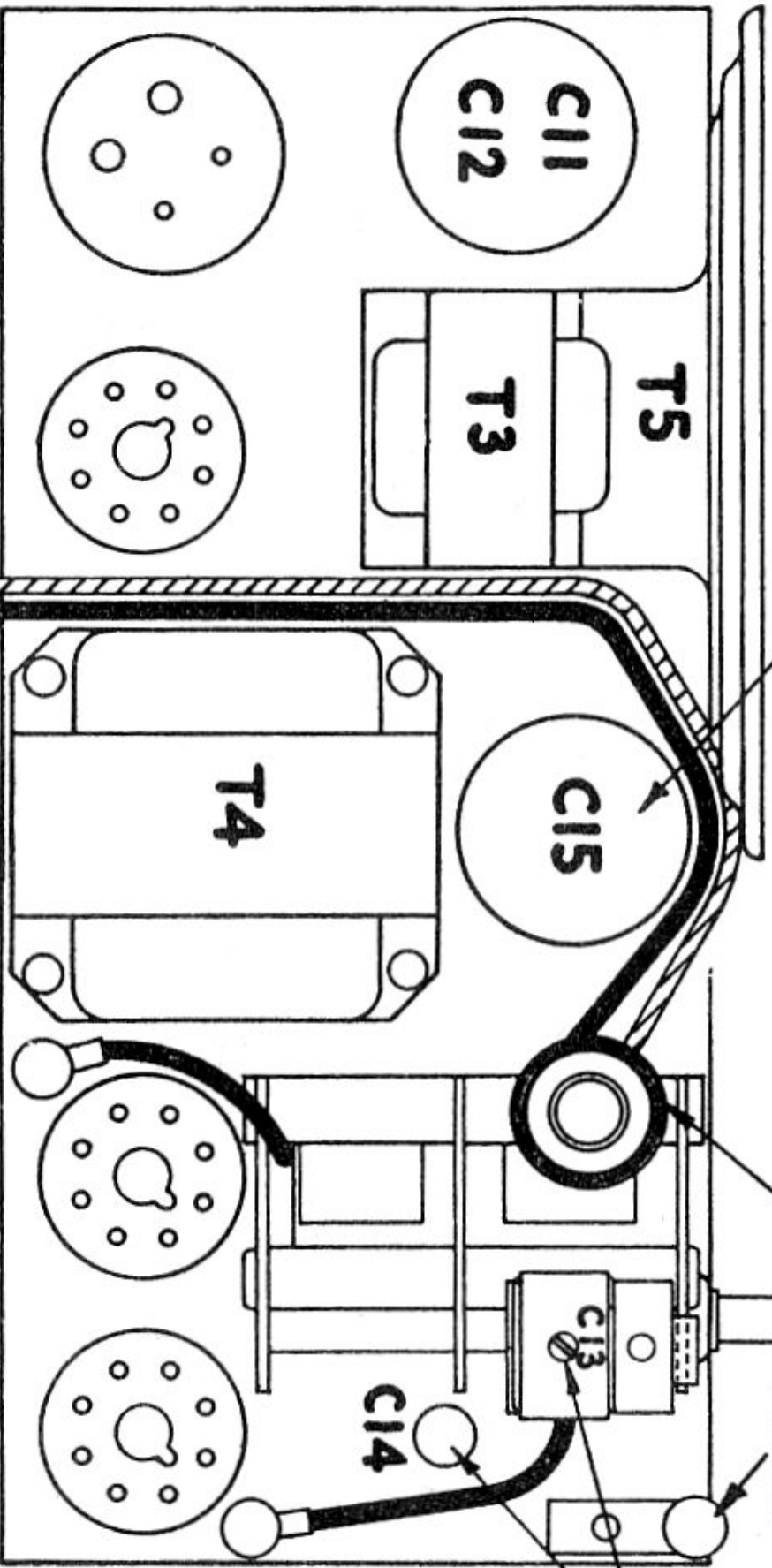
FIRST RELEASE MOUNTED ON CHASSIS AS SHOWN,
 LATER RELEASES MOUNTED INSIDE OF CHASSIS.

25 CYCLE ONLY.

ADJUST COIL AT 600 KC.

PT.#
13108

1400 K.C.
 ALIGNING



Rogers 11/40 (Chassis 6R411, 6R412)

Majestic "Scout" (Chassis 6M411)

De Forest Crosley "Aries" (Chassis 6D411)