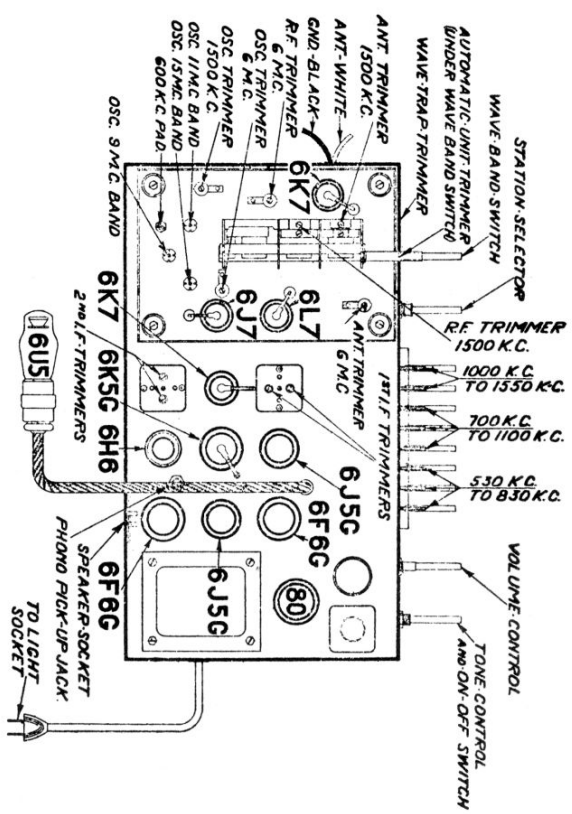
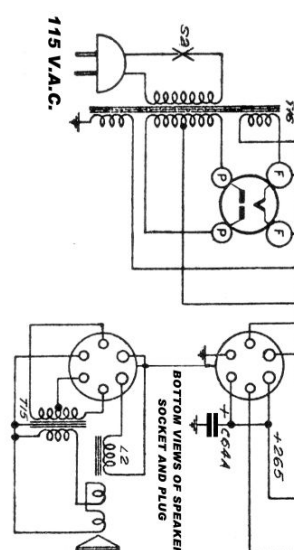


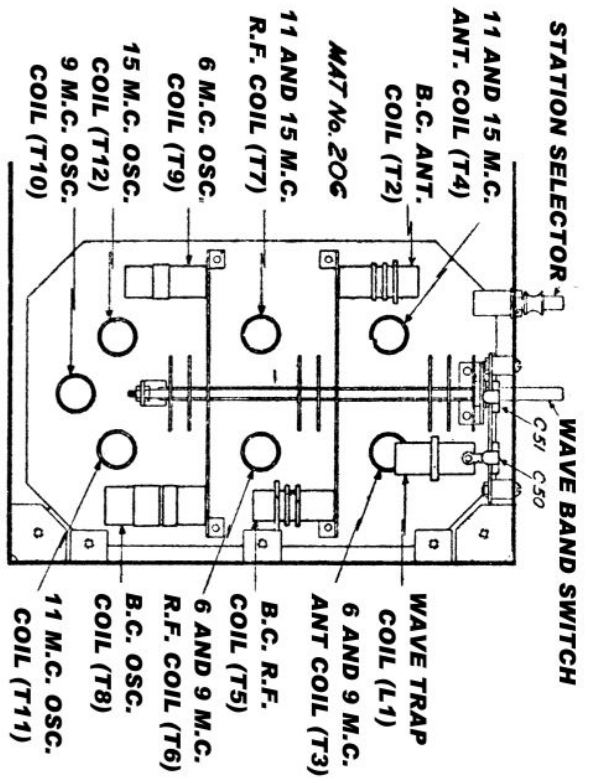
BAND CHANGE SWITCH SHOWN IN AUTOMATIC TUNING POSITION (POS. NO. 1)



Phonola -

Electrohome 8A125X-P





VIEWED FROM BOTTOM OF CHASSIS

PERMEABILITY ELECTRIC TUNING

Coils T1A and T1B are wound on the same coil form. The inductance of each coil is determined by the setting of a permeability tuning plunger which consists of two iron slugs mounted on the brass tuning screw and located inside the coil form. In this circuit the capacity is fixed and tuning is effected by changing the coil inductance. This is accomplished by varying the position of the plunger with respect to the coils.

Each coil form and each plunger unit is color coded, designating the tuning range covered, (see parts and price list). The coils nearest the front of the receiver are the oscillator coils T1B.

Electrohome 8A125X-P

ALIGNMENT — PROCEED IN SEQUENCE LISTED

Band	Band Switch Setting	Dummy Antenna	Connect Generator to	Radio Dial Setting	Generator Frequency	Trimmer Adjusted	Adjustment	Note	Approx. Sensitivity
2nd I.F.	B	.1 Mfd.	Grid of 6K7 I.F. Tube	1700 K.C.	456 K.C.	2nd I.F. C-54 C-55	Maximum Output		4000 Microvolts
1st I.F.	B	.1 Mfd.	Grid of 6L7 1st Detector	1700 K.C.	456 K.C.	1st I.F. C-52 C-53	Maximum Output		95 Microvolts
1460 K.C.	B	250 Mmfd.	Antenna	1460 K.C.	1460 K.C.	B.C. Osc. C-58 B.C.R.F.C-61B B.C.Ant C-61A	Maximum Output	Rock Rotor Back & Forth	5 Microvolts
600 K.C.	B	250 Mmfd.	Antenna	600 K.C.	600 K.C.	B.C. Padder C-60	Maximum Output		3 Microvolts
49 Meters	C	400 Ohm	Antenna	8.1 M.C. 6.05 M.C. 8.15 M.C.	8.1 M.C. 6.05 M.C. 8.15 M.C.	Osc. Trim C-59 R.F. Trim C-57 Ant. Trim C-56	Maximum Output	Check Image See Note II	7 Microvolts
31 Meters	D	400 Ohm	Antenna	9.55 M.C.	9.55 M.C.	Adjust T-10 Iron Core	"	"	7 Microvolts
25 Meters	E	400 Ohm	Antenna	11.80 M.C.	11.80 M.C.	Adjust T-11 Iron Core	"	"	7 Microvolts
19 Meters	F	400 Ohm	Antenna	15.25 M.C.	15.25 M.C.	Adjust T-12 Iron Core	"	"	7 Microvolts
Wave Trap	B	250 Mmfd.	Antenna	540 K.C.	456 K.C.	C-50	Minimum Output		