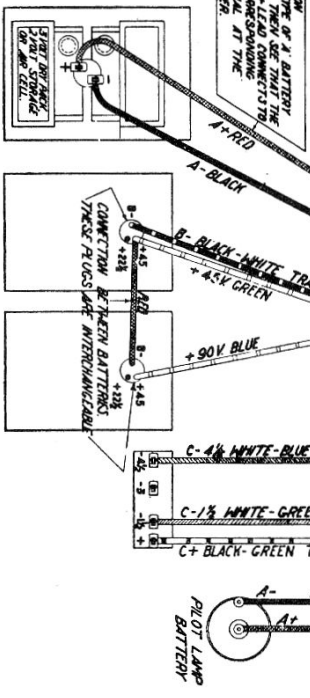
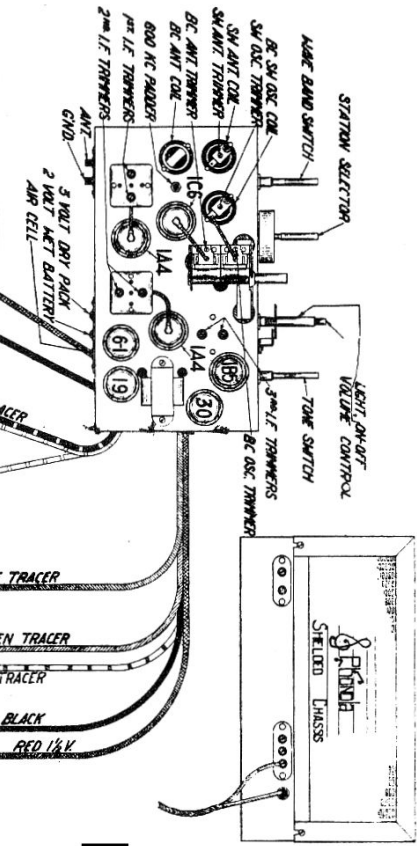


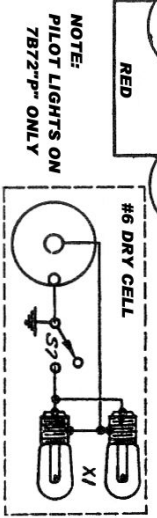
B - BROADCAST BAND
1800 TO 528 K.C.
S - SHORT WAVE BAND
18000 TO 5950 K.C.



Phonola -

Electrohome

7B72-M, 7B72-P & 7B72-S



I. F. ALIGNMENT

Set the signal generator to 456 K.C. and connect the output to the grid cap of the 1C6 tube through a .1 Mfd. condenser. The generator ground is connected to the chassis which must be externally grounded. The receiver dial is set at maximum frequency (gang open) the selector switch turned to the broadcast band position and the volume control turned full on.

The I. F. trimmers, located as shown on the tube layout chart, are then adjusted by means of a non-metallic screw driver until maximum output results.

R. F. ALIGNMENT

Broadcast Band

1500 K. C. Set the signal generator to 1500 K.C., and connect its output lead to the antenna post of the receiver in series with a .00025 Mfd. condenser. The ground from the signal generator must be connected to the chassis ground post or frame, and externally grounded. With the band selector switch in the broadcast position, the dial of the receiver set at 1500 K.C. and the volume control turned full on, adjust the broadcast oscillator trimming condenser, located as shown on the tube layout chart, until a signal is heard.

Note: There may be two signals present, use the one obtained by the minimum capacity setting of the trimming condenser and adjust it to its peak. Then adjust the broadcast antenna trimming condenser for maximum output.

600 K.C. Set the receiver dial and the signal generator to 600 K.C. Adjust the 600 K.C. padding condenser for maximum output. While making this adjustment rock the tuning control back and forth through the signal until maximum output results.

Following this, it is advisable to repeat the procedure outlined for 1500 K.C. to compensate for any slight discrepancy caused by the adjustment of the series padding condenser.

RCC - Phonola Data Sheet 69 (Lower) - 1937-38

Electrohome

7B72-M, 7B72-P & 7B72-S

Battery Operated Radio Alignment Information

Short Wave Band

15 M. C. Set the signal generator to 15 M.C. and connect its output to the antenna post of the receiver, through a 400 ohm resistor. The ground of the signal generator is connected to the chassis frame or ground post and must be externally grounded. Switch the receiver to short wave band, set the receiver dial to 15 M.C. and turn the volume control full on. Adjust the short wave oscillator trimming condenser until a signal is heard.

Note: There may be two signals present, use the one obtained by the minimum capacity setting of the trimming condenser and adjust it to its peak. The short wave antenna trimming condenser is then adjusted for maximum output.