

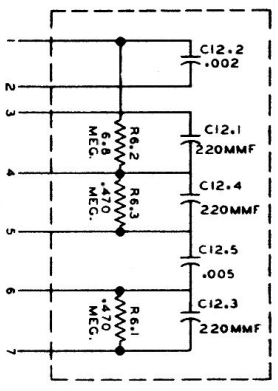
V1  
12BE6  
CONVERTER

V2  
12BA6  
I.F. AMPLIFIER

V3  
12AV6  
2ND DET. AVC A.F. AMP

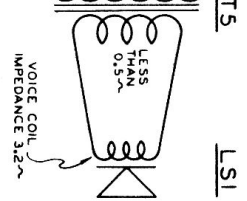
V4  
50C5  
OUTPUT AMP

# Northern Electric 5800



SCHEMATIC OF PC150  
REFER TO CAPACITOR CERAMIC  
PRINTED CIRCUIT TYPE  
R1763-3

- NOTE:
- 1 ALL VOLTAGES ARE TAKEN FROM THE COMMON NEGATIVE AND ABOVE READINGS ARE TAKEN FOR 117V INPUT WITH A 20000 OHM 1V METER. 1/2 WATT UNLESS OTHERWISE STATED.
  - 2 ALL RESISTORS TO BE 1/2 WATT UNLESS OTHERWISE STATED.
  - 3 ALL CAPACITANCE VALUES IN MFD UNLESS OTHERWISE STATED.





## ALIGNMENT PROCEDURE

## Northern Electric 5800

<u>Alignment Frequency</u>	<u>Dummy Antenna</u>	<u>Receiver Connection</u>	<u>Adjust for Maximum Output</u>
I.F. 455 K.C.	0.1 UF	Rear gang section	gang open, adjust slugs in T4 and T3.
R.F. 535 K.C.	1000 ohms	Ant. lead	Osc. slug T2
R.F. 1620 K.C.	1000 ohms	Ant. lead	Front trimmer
R.F. 600 K.C.	1000 ohms	Ant. lead	Antenna T1
R.F. 1400 K.C.	1000 ohms	Ant. lead	Rear trimmer

When set is properly aligned fix antenna in position by applying household cement with a small brush.