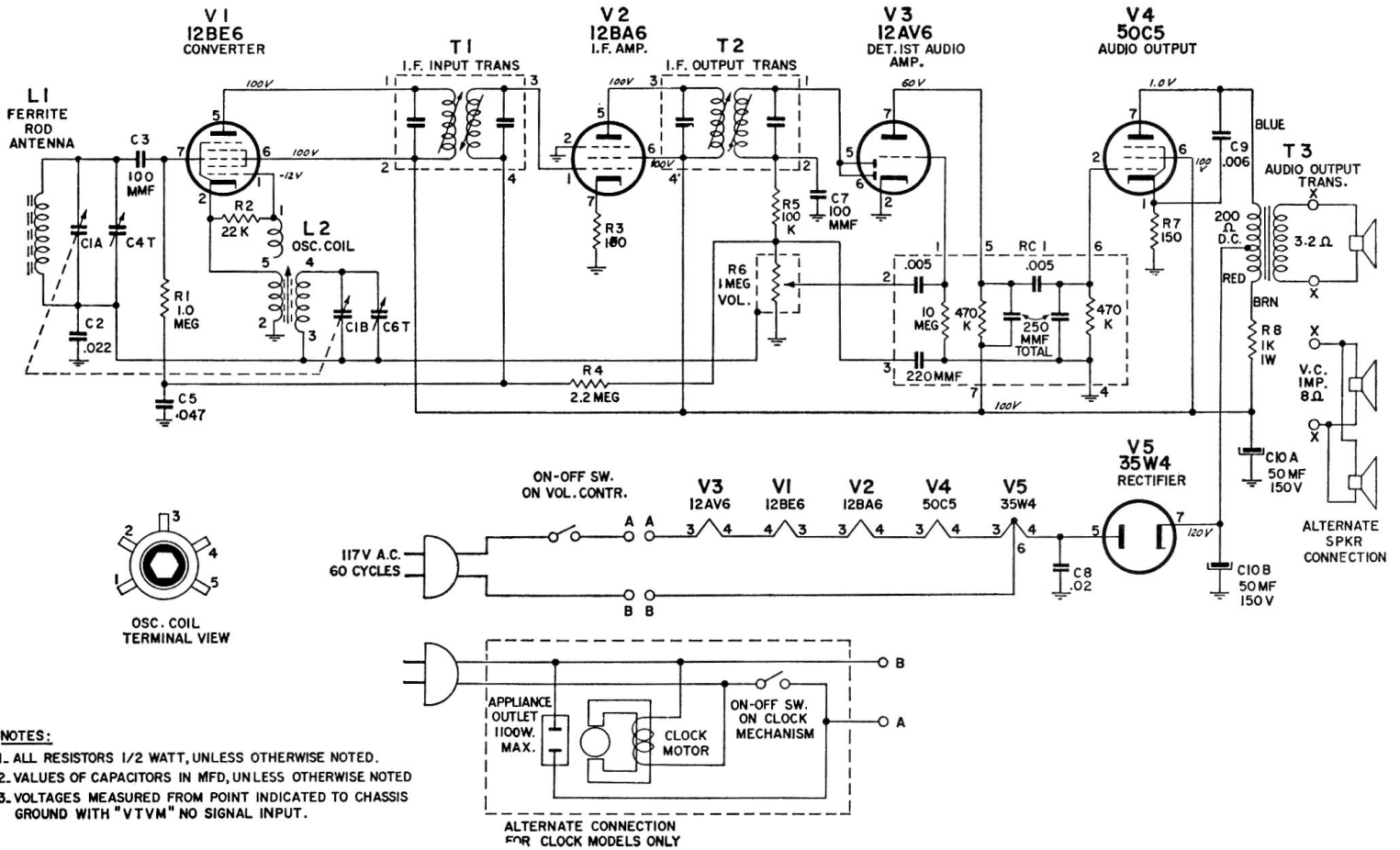


Fleetwood 5020 AC/DC & Clock Receiver



ALIGNMENT PROCEDURE

SIGNAL GENERATOR				TUNER SETTING	ADJUST FOR MAXIMUM OUTPUT
FREQUENCY	COUPLING CAPACITOR	CONNECTION TO RADIO	GROUND CONNECTION		
455 Kc	.05 Mfd.	Rear stator plates of tuning condenser.	B Minus Buss Lead	Any point near center where no interfering signal is received.	Coil T-1 & T2
1630 Kc	.05 Mfd.	Rear stator plates of tuning condenser.	B Minus Buss Lead	Exactly 1630 Kc.	Oscillator trimmer of Gang. (C6T)
1400 Kc	—	Lay Generator lead near back of cabinet.	B Minus Buss Lead	Exactly 1400 Kc.	Antenna trimmer of Gang. (C4T)