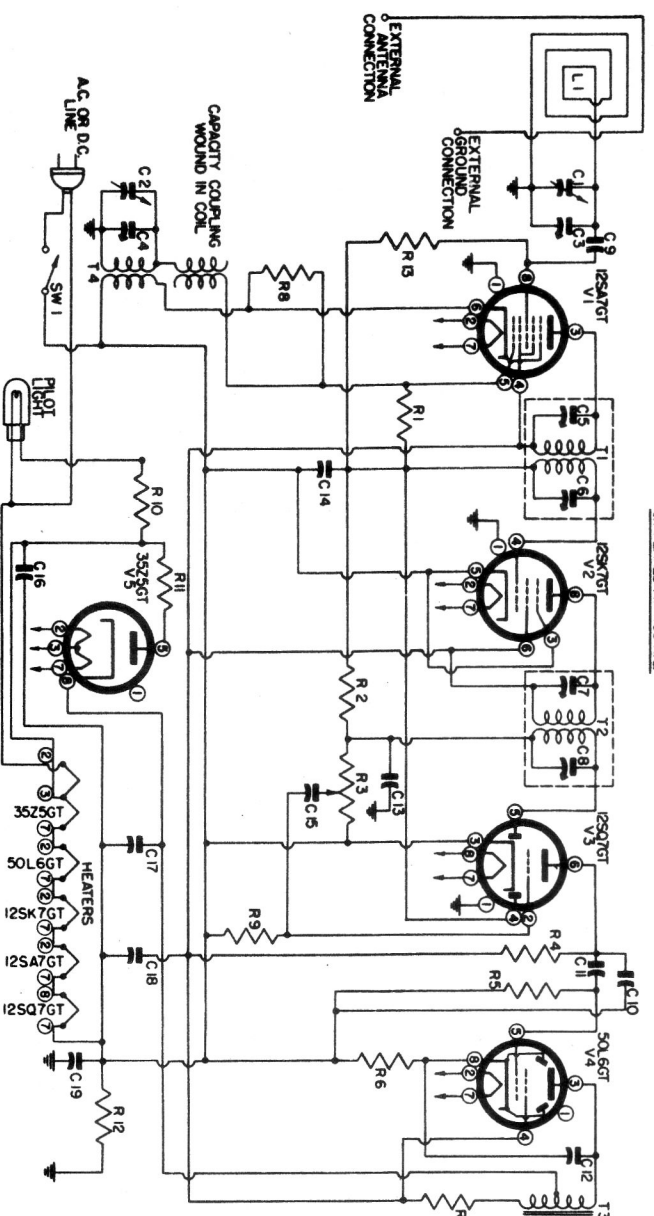


MODEL 539C



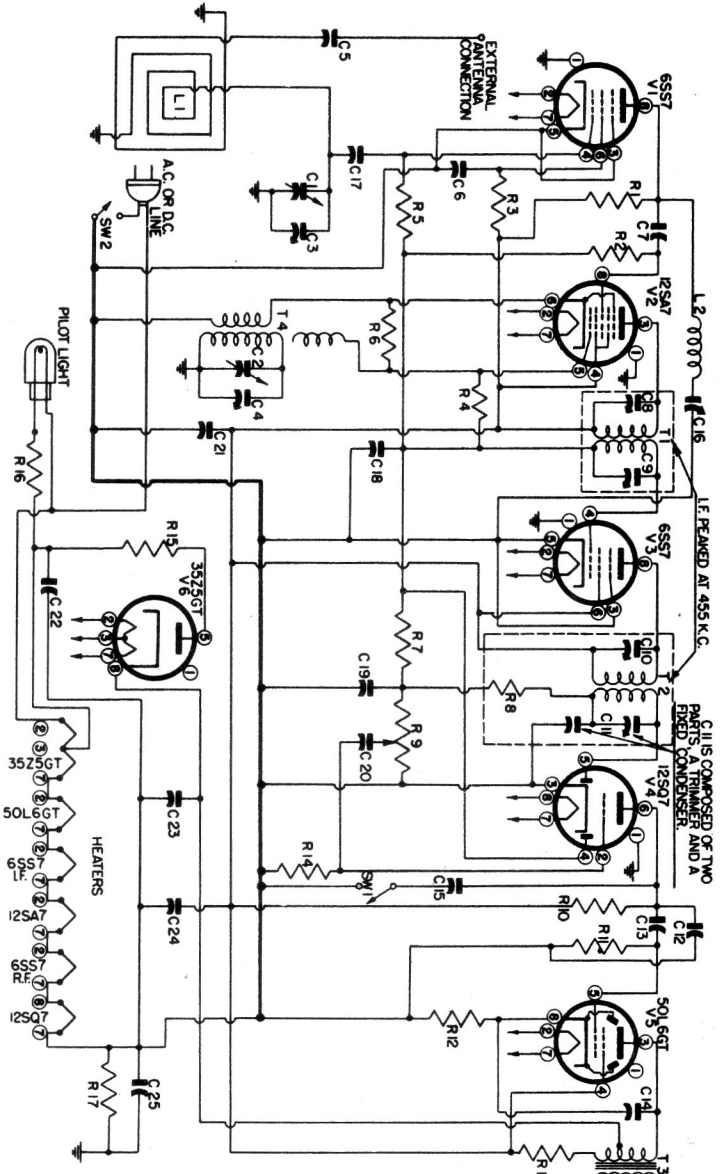
R1	15 MEG.	1/4 W.
R2	3.3 MEG.	1/4 W.
R3	.5 MEG. VOLUME CONTROL	
R4	470,000 OHMS	1/4 W.
R5	470,000 OHMS	1/4 W.
R6	190 OHMS	1/2 W.
R7	1,000 OHMS	1 W.
R8	22,000 OHMS	1/4 W.
R9	15 MEG.	1/2 W.
R10	10 OHMS	1/2 W.
R11	15 OHMS 1 W. WIRE WOUND	
R12	220,000 OHMS	1/4 W.
R13	470,000 OHMS	1/4 W.

C1, C2	TWO GANG VARIABLE COND.
C3	TRIMMER
C4	TRIMMER
C5, C6	TRIMMERS
C7, C8	TRIMMERS
C9	.00022 MF. MICA
C10	.001 MF. 400 VOLT
C11	.02 MF. 400 VOLT
C12	.02 MF. 400 VOLT
C13	.00022 MF. MICA
C14	.1 MF. 500 VOLT
C15	.002 MF. 500 VOLT
C16	.05 MF. 400 VOLT
C17	50 MF. 150 V. DUAL DRY ELECT.
C18	50 MF. 150 V. DUAL DRY ELECT.
C19	2 MF. 500 VOLT

1946-47

MODELS 512C 515C

I.F. 455 KC.
I.F. PEAKED AT 455 K.C.



R1	10,000 OHMS	1/4 WATT
R2	22,000 OHMS	1/4 WATT
R3	39,000 OHMS	1/4 WATT
R4	15 MEG.	1/4 WATT
R5	470,000 OHMS	1/4 WATT
R6	22,000 OHMS	1/4 WATT
R7	3.3 MEG.	1/4 WATT
R8	47,000 OHMS	1/4 WATT
R9	5 MEG. VOLUME CONTROL	
R10	470,000 OHMS	1/4 WATT
R11	470,000 OHMS	1/4 WATT
R12	150 OHMS	1/2 WATT
R13	1,000 OHMS	1 WATT
R14	15 MEG.	1/4 WATT
R15	15 OHMS 1/2 WATT	
R16	220,000 OHMS	1/4 WATT
R17	220,000 OHMS	1/4 WATT

C1, C2	TWO GANG VARIABLE CONDENSER
C3	TRIMMER
C4	TRIMMER
C5	.002 MF. 600 VOLT
C6	.05 MF. 200 VOLT
C7	.00011 MF. MICA
C8, C9	TRIMMERS
C10	TRIMMER
C11	TRIMMER & FIXED CONDENSER
C12	.00022 MF. MICA
C13	.02 MF. 400 VOLT
C14	.02 MF. 400 VOLT
C15	.002 MF. 600 VOLT
C16	.002 MF. 600 VOLT
C17	.00022 MF. MICA
C18	.05 MF. 200 VOLT
C19	.00011 MF. MICA
C20	.002 MF. 600 VOLT
C21	.05 MF. 400 VOLT
C22	.05 MF. 400 VOLT
C23	30 MF. 150 V. DUAL ELECT. COND.
C24	50 MF. 150 V. DUAL ELECT. COND.
C25	.2 MFD 200 VOLTS 10% TOL. PAPER DIELECT. 2 MFD 500 VOLTS 10% TOL. PAPER DIELECT.

C1, C2 TWO GANG VARIABLE CONDENSER PARTS A TRIMMER AND A FIXED CONDENSER