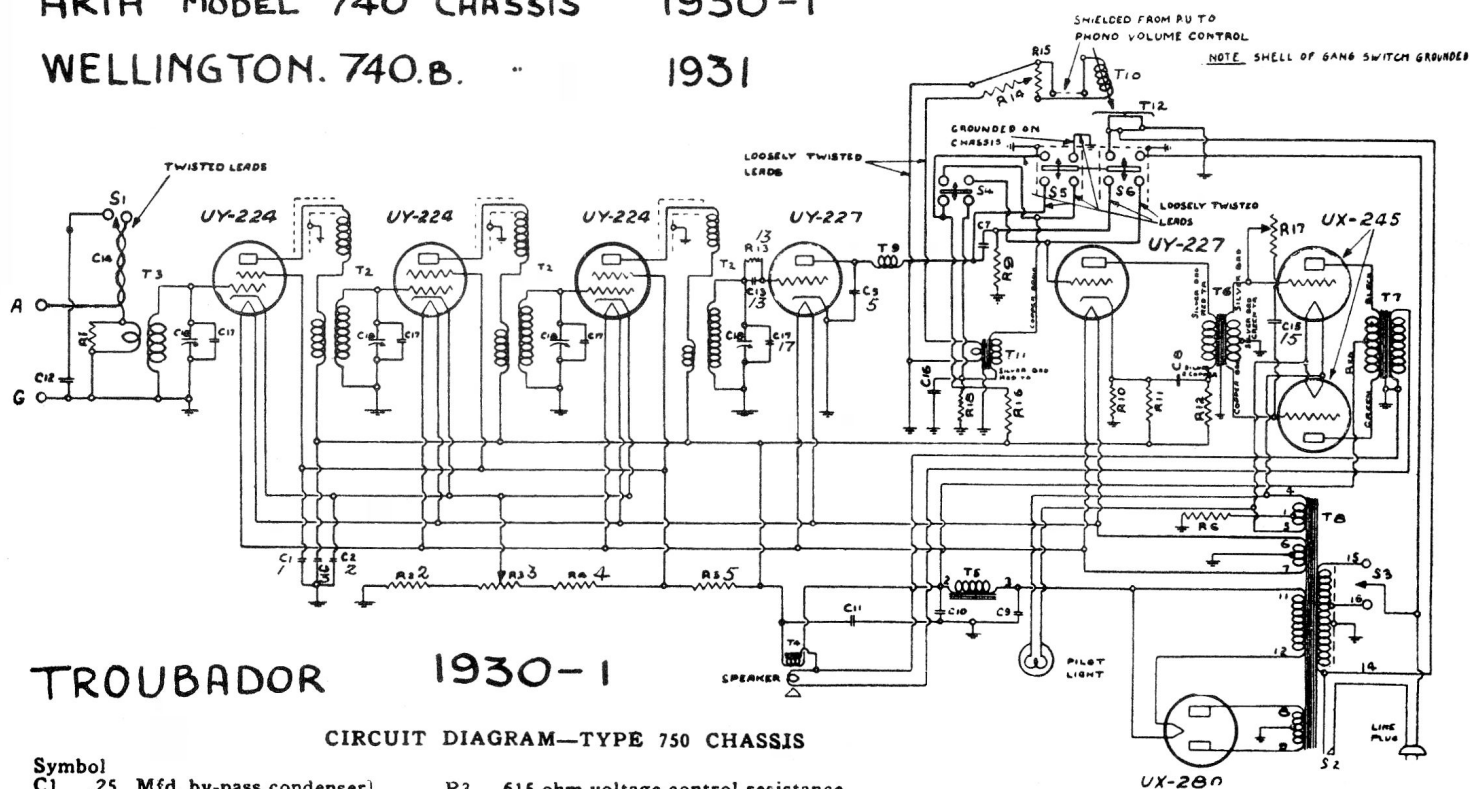


ARIA MODEL 740 CHASSIS 1930-1

WELLINGTON. 740.B. 1931



TROUBADOR 1930-1

CIRCUIT DIAGRAM—TYPE 750 CHASSIS

- |        |  |     |  |
|--------|--|-----|--|
| Symbol |  |     |  |
| C1     | .25 Mfd. by-pass condenser                   | R3  | 615 ohm voltage control resistance (Potentio)                    |
| C2     | .25 Mfd. by-pass condenser                   | R4  | 7230 ohm voltage divider resistance                              |
| C3     | 30 Mfd. by-pass condenser                    | R5  | 6,500 ohm voltage divider resistance                             |
| C5     | .002 Mfd. by-pass condenser                  | R6  | 835 ohm 245 bias resistance                                      |
| C7     | .25 Mfd. by-pass condenser                   | R9  | 1 megohm grid leak resistance                                    |
| C8     | .25 Mfd. by-pass condenser (also C16)        | R10 | 400 ohm 227 bias resistance                                      |
| C9     | 8 Mfd. filter condenser                      | R11 | 20,000 ohm 227 bias bleeder resistance                           |
| C10    | 8 Mfd. filter condenser                      | R12 | 20,000 ohm 1st audio filter resistance                           |
| C11    | 8 Mfd. filter condenser                      | R13 | 1.25 megohm grid leak resistance                                 |
| C12    | .00025 Mfd. by-pass condenser                | R14 | 31 ohm limiting resistance                                       |
| C13    | .0001 Mfd. grid condenser                    | R15 | 60 ohm phono volume control resistance (Potentio)                |
| C14    | .00003 Mfd. antenna condenser (Twisted wire) | R16 | 10,000 ohm det. plate resistance                                 |
| C15    | .002 Mfd. by-pass condenser (Tone control)   | R17 | 1 megohm tone control resistance (Potentio) <b>NOT IN P.D.D.</b> |
| C16    | .5 Mfd. by-pass condenser                    | R18 | 200,000 ohm loading resistance                                   |
| C17    | Aligning condenser                           |     |  |
| C18    | Gang condenser                               |     |  |
| R1     | 10,000 ohm Attenuator resistance             |     |  |
| R2     | 130 ohm Bleeder resistance                   |     |  |

TYPE OF TUBE	POSITION OF TUBE	TUBE IN					
		"A" VOLTS	"B" VOLTS	SCREEN VOLTS	SCREEN CURRENT	Control Grid ("C") Volts	NORMAL MA.
224	RF	2.25	172	89		3-10	3-5
227	DETC	2.23	75			0	4-6
227	AF	2.23	98			6.8	4-6
245	P.P.	2.36	240			48	25-45
280	RECT	325 A.C.		45-50 MA.			

Power transformer: 25 cycle, watts 100 at 120 volts  
 60 cycle, watts 87 at 120 volts

Motor (Green Flyer): 25 cycle, watts 32 at 120 volts  
 60 cycle, watts 23 at 120 volts