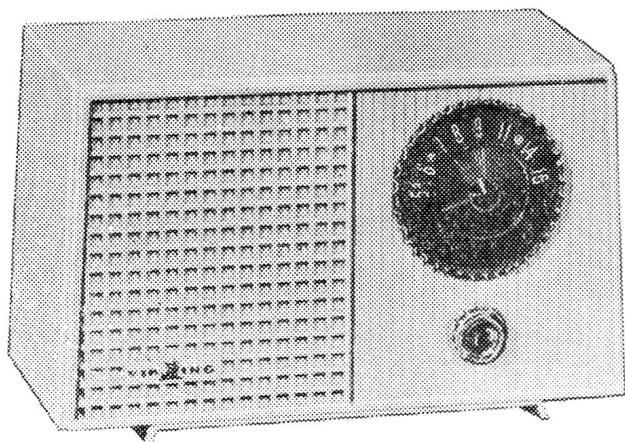


VIKING Service Information for "RM-276"



SPECIFICATIONS

Standard Broadcast Range 540 Kc — 1650 Kc
Intermediate Frequency 455 Kc
Power Consumption 30 Watts
Undistorted Output 750 mw
Maximum Power Output 1.5 Watts

12BE6	35W4
	Rear of Gang
	50C5
12BA6	12AV6
	Rear of Vol. Control and switch.

Power supply: 105-125 Volts A.C., 25-60 Cycles or 105-125 Volts D.C.

When writing for Service Information or Parts, please quote Model Number, Serial Number and finish of cabinet.

CAUTION FOR SERVICEMEN

Any serviceman working with this receiver when it is out of the cabinet should take special care not to come in contact with any ground connections.

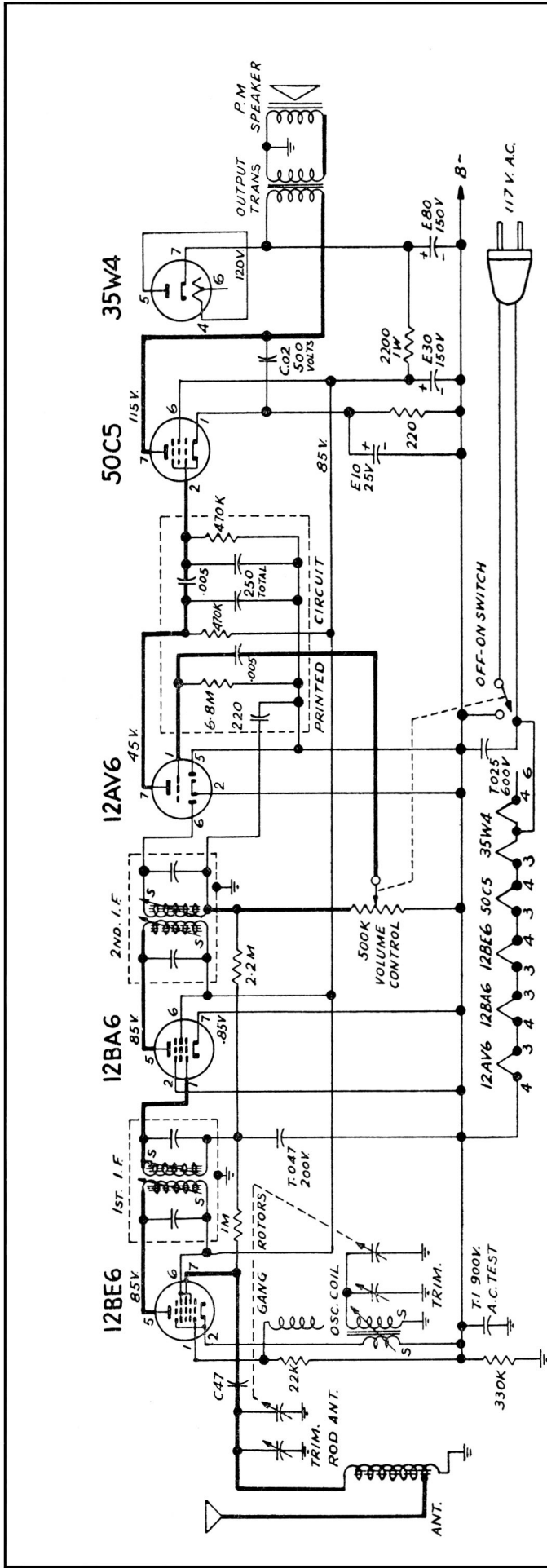
SERVICE REPLACEMENT PARTS LIST

G-665.....Electrolytic 80 and 30 ufd x 150 DC WV
10 ufd x 25 DC WV
K-1446-1.....Line Cord & Plug Assembly 6' — Ivory
K-1503.....Printed Circuit — Audet
K-1427-6.....Speaker — 4" P.M.
LK-582-4.....Output Transformer 3.2 ohm V.C.
P-2977-1.....BC Osc. Coil
P-2923.....I.F. Transformer (1st and 2nd)
P-2976.....Rod Antenna Assembly
R-450-1.....Volume Control & AC Switch
V-398-1.....Gang Condenser

INSTALLATION

A-3043-1.....Cabinet — Brown
A-3043-2.....Cabinet — Ivory
A-3043-3.....Cabinet — White
A-3043-4.....Cabinet — Pink
A-3043-5.....Cabinet — Bright Red
N-503-3.....Knob—Calibrated (use with white cabinet
only)
N-503-2.....Knob—Calibrated (use with all colours of
cabinets except white)
N-540-1.....Knob Volume Control

THE T. EATON CO. LIMITED
C A N A D A



J-3961

COMPONENT VALUES

RESISTORS: HALF WATT, UNLESS OTHERWISE NOTED.
 20% TOLERANCE, UNLESS OTHERWISE NOTED.
 K = 1000 OHMS.
 M = 1000,000 OHMS.

CONDENSERS: T=TUBULAR, FOLLOWED BY CAP. IN MFD. AND D.C.M.V.
 E=ELECTROLYTIC, FOLLOWED BY CAP. IN MFD. & D.C.M.V.
 C=CERAMIC, FOLLOWED BY CAP. IN MMFD. & TOL. IF CRITICAL.
 M=MICA, FOLLOWED BY CAP. IN MMFD. & TOL. IF CRITICAL.

ALL VOLTAGES ± 10% MEASURED TO B- WITH A 20,000 OHM/VOLT METER.

ALIGNMENT AND SENSITIVITY

STEP	APPLY SIGNAL AT KC.	THRU SERIES TO DUMMY	SET GANG AT	ADJUST FOR NOMINAL SENSITIVITY FOR 50 MILLIWATTS OUTPUT	
				MINIMUM CAPACITY	MAX. OUTPUT
1	455	#1/PIN	.05	2nd. I.F.	1600 μV.
2	455	#7/PIN	.05	1st. I.F.	75 μV.
3	1460	ANT.	400 Ω	2nd. I.F. OSC. TRIM.	14 μV.
4	1625	ANT.	400 Ω	ANT. TRIM.	—
5	600	ANT.	400 Ω	CHECK ONLY	22 μV.
6	525	ANT.	400 Ω	CHECK ONLY	—

C.N. No	DATE	CHANGE	SYMB	CHK