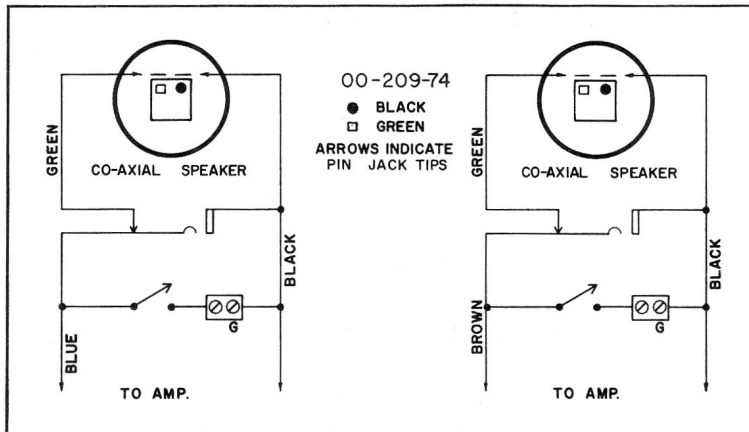


## 9 Tube AM-FM Radio Phonograph

### SPEAKER CONNECTIONS



For Operation on 110-120V. A.C.,  
Cycle as Marked

When writing for Service Information or Parts,  
Please quote Model Number, Serial Number,  
Cycle and Finish of Cabinet.

### SPECIFICATIONS

#### AM-FM TUNER

Standard Broadcast Range ..... 535 to 1605 Kc.

Frequency Modulation Range ..... 88 to 108 Mc.

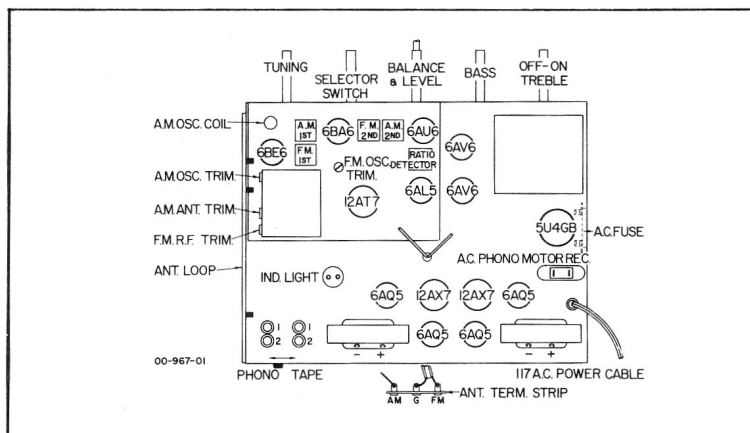
I.F. Frequency AM - 455 Kc.

FM - 10.7 Mc.

Sensitivity AM - 30 uv for 100 mv at Detector

FM - 5 uv for 20 DB Quieting

### CHASSIS LAYOUT

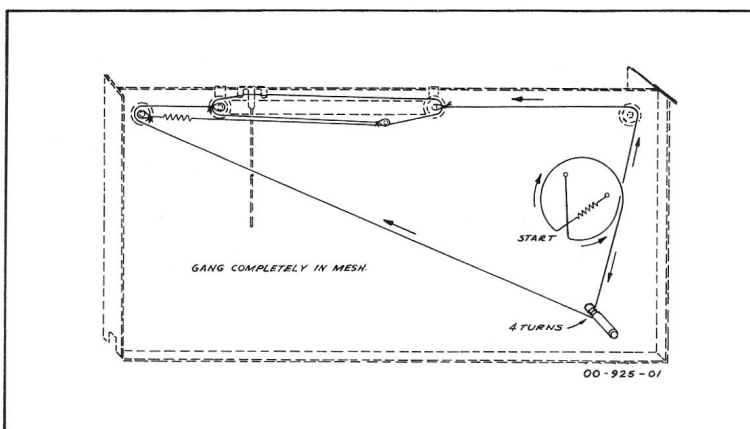


#### AMPLIFIER

Frequency Response - 50 cps to 15,000 cps  $\pm$  2DB

Power Output - 8 watts Peak

### STRINGING DETAIL



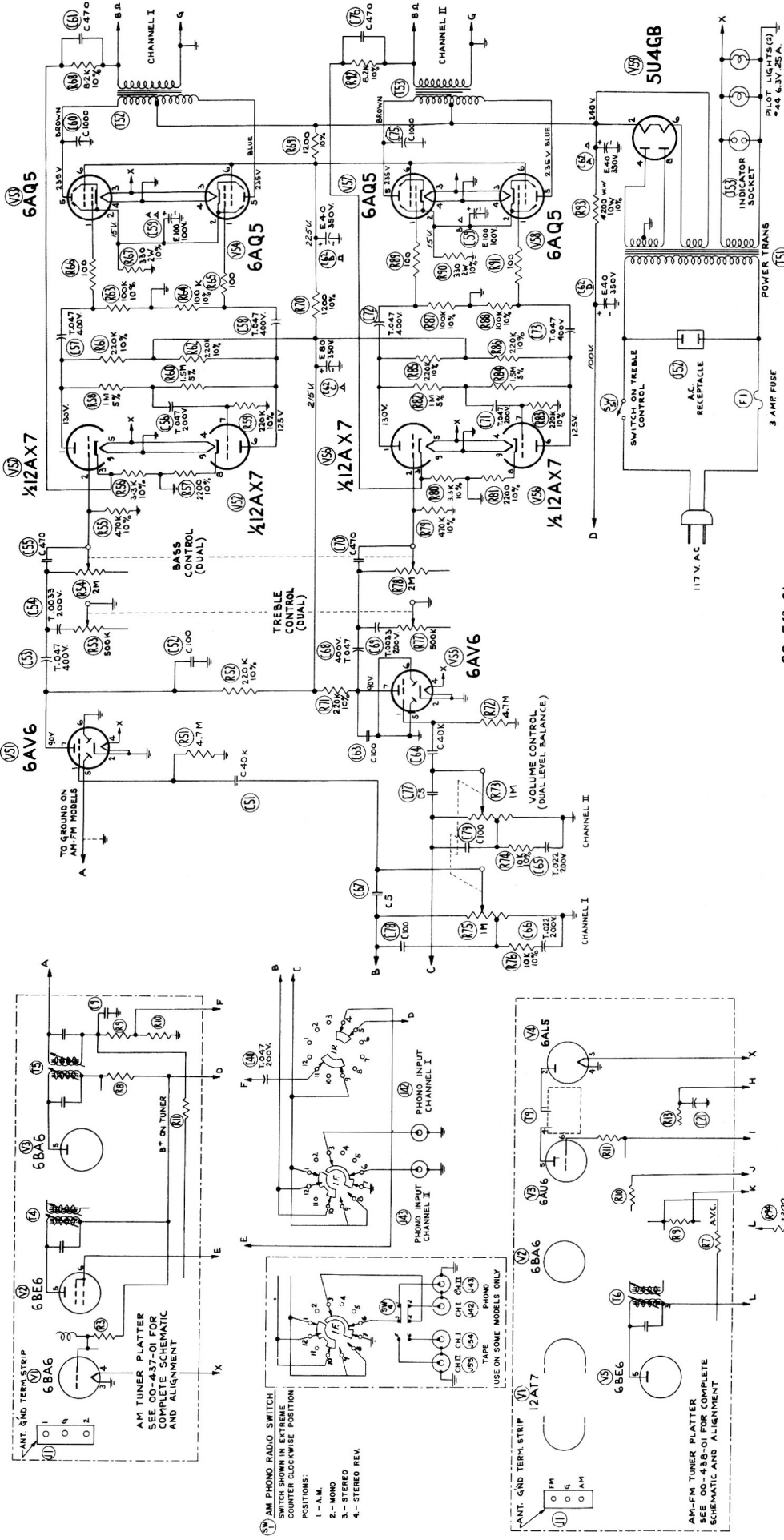
All information printed in this leaflet is up to  
date as of Sept. 10/1959

Subsequent changes are covered by bulletin

**THE TEATON CO. LIMITED**  
**CANADA**

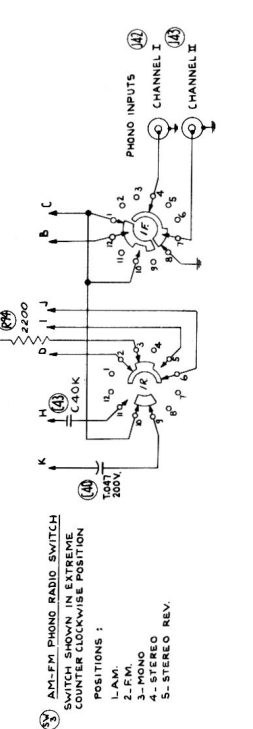
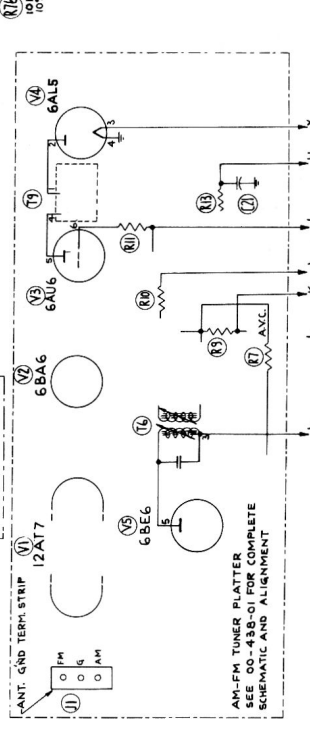
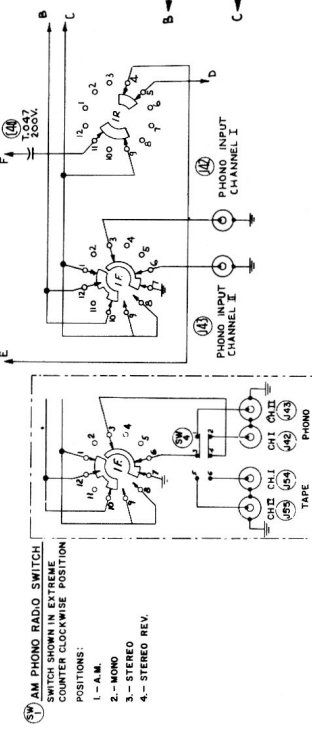
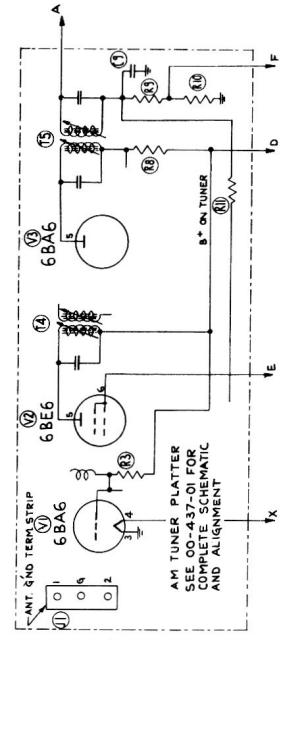
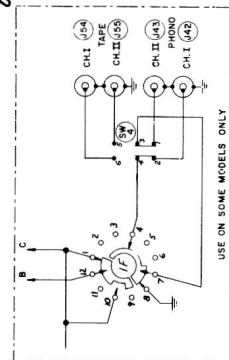


# AMPLIFIER



COMPONENT VALUES  
 RESISTORS: HALF WATT, UNLESS OTHERWISE NOTED.  
 20% TOLERANCE, UNLESS OTHERWISE NOTED.  
 K = 1000 OHMS  
 M = 1000,000 OHMS  
 CONDENSERS: T = TUBULAR, FOLLOWED BY CAP IN MFD AND D.C. V.V.  
 P = POLYMER, FOLLOWED BY CAP IN MFD AND TOLERANCE IF CRITICAL.  
 C = CERAMIC, FOLLOWED BY CAP IN MFD AND TOLERANCE IF CRITICAL.  
 M = MICA, FOLLOWED BY CAP IN MFD AND TOLERANCE IF CRITICAL.  
 ALL VOLTAGES MEASURED WITH 20,000 OHMS/VOLT METER.

00-542-01



57 AM PHONO RADIO SWITCH  
 SWITCH SHOWN IN EXTREME  
 COUNTER CLOCKWISE POSITION  
 POSITIONS:  
 1.-A.M.  
 2.-MONO  
 3.-STEREO  
 4.-STEREO REV.

58 ANT. GND TERM. STRIP  
 11 FM  
 12 AM

59 AM-FM PHONO RADIO SWITCH  
 SWITCH SHOWN IN EXTREME  
 COUNTER CLOCKWISE POSITION  
 POSITIONS:  
 1.-A.M.  
 2.-FM  
 3.-MONO  
 4.-STEREO  
 5.-STEREO REV.

USE ON SOME MODELS ONLY

# REPLACEMENT PARTS LIST

## FINAL ASSEMBLY

16-90014-03	Garrard RC88/4D Record Changer
16-250015-02	GP73SD Stereo Cartridge
16-120040-02	DS73 .7 MIL Diamond & 3 MIL Sapphire Stylus
16-120004-01	45 RPM Spindle
19-210001-02	12" Coaxial Speaker 8 ohm 2 used
27-1-01	Pilot Lamp No. 44
30-99-01	Glass Control Panel
53-407-01	Disc - Tuning
53-407-02	Disc - Bass-Tone-Treble Tone
53-407-04	Disc - Selector AM/FM
53-407-05	Disc - Level - Balance
53-411-02	Knob - 4 used
53-411-05	Knob - Front
53-427-01	Knob - Rear
53-9-12	Glass Retaining Strip

## 5 TUBE AM/FM TUNER PLATTER CHASSIS

21-300-03	FM RF Peaking Coil
21-421-01	BC Oscillator Coil
21-432-02	AM IF Transformer 1st & 2nd
21-433-01	FM IF Transformer T2
21-433-02	FM IF Transformer T3
21-439-02	RF Choke 2.2 uh
21-441-01	Ratio Dectector
21-443-01	FM RF Coil
21-444-01	FM Oscillator Coil
21-445-01	FM Oscillator Feedback Coil
21-449-01	FM RF Coil
44-88-01	Miniature Electrolytic 3.2 ufd X 70 Volts
45-38-01	AM/FM Gang Condenser
45-32-01	AM/FM Gang Condenser (Alternative)

## 9 TUBE 8 WATT AMPLIFIER CHASSIS COMPONENTS

24-10044-01	Power Transformer 60 cycle
24-80039-01	Output Transformer 2 used
26-45-01	Selector Switch
26-2-03	Slide Switch D.P.D.T.
27-6-06	Fuse 3 AG 250 Volt
27-1-01	Pilot Lamp No. 44 6.8 Volts
41-120-01	Dual Control - Treble - Off-On
41-121-01	Dual Control - Bass
41-122-01	Dual Control Balance - Level
41-122-03	Dual Control Balance - Level
42-1-48	W.W. Resistor 4200 ohm 10 Watt