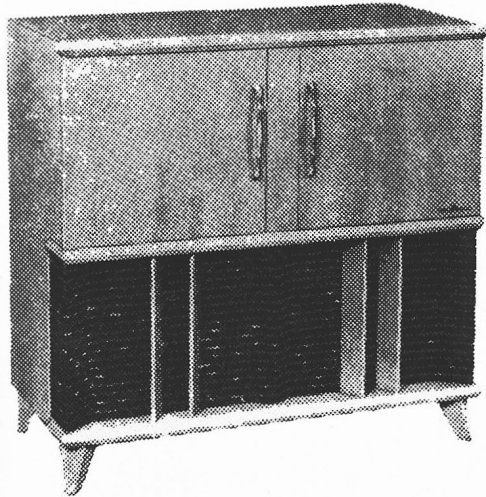


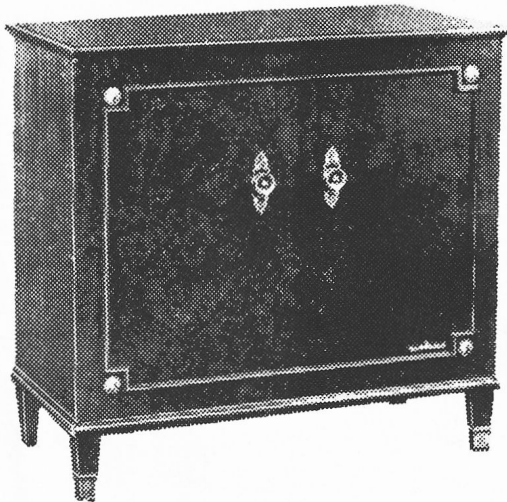
VIKING Service Information for MODELS

RC-269
RC-270
RC-271
RC-271R

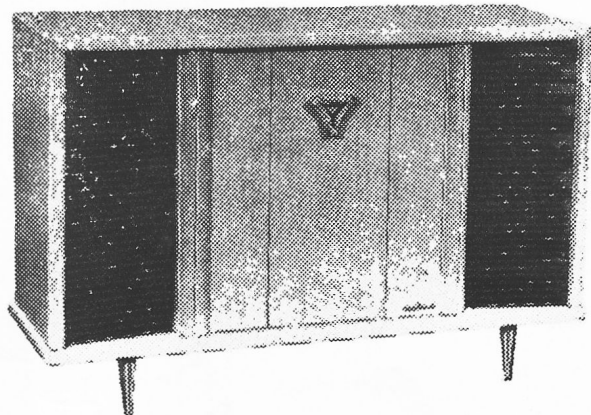
For Operation on 110-120 Volts A. C.
 Cycle as Marked



RC-270 8 Tube

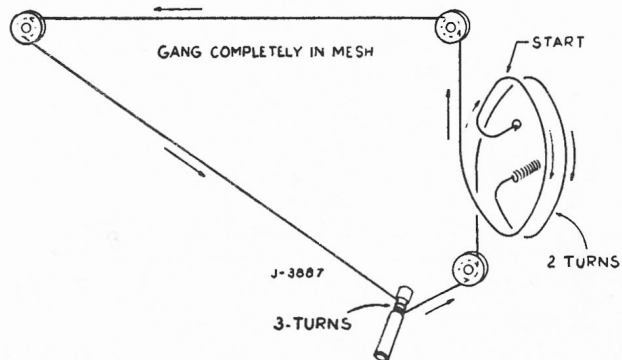
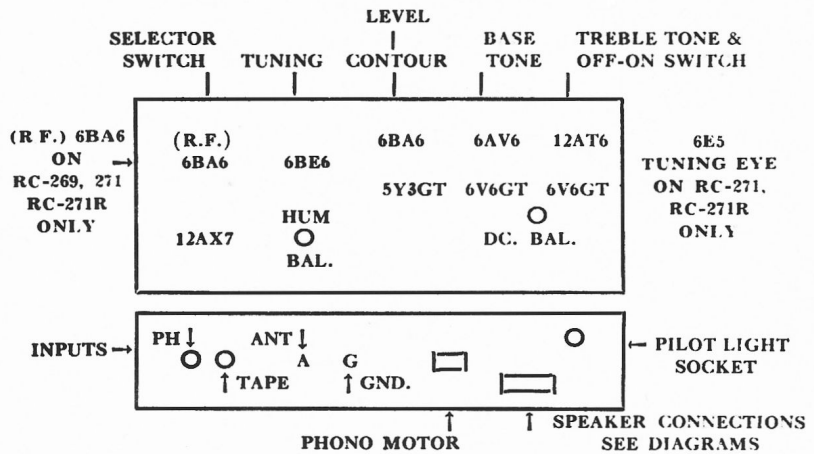


RC-269 9 Tube



RC-271, RC-271R 10 Tube

FOR ALIGNMENT AND SENSITIVITY DATA
 SEE SCHEMATIC



STRINGING DETAIL

SPECIFICATIONS

Standard Broadcast Range 535 Kc - 1650 Kc
 Intermediate Frequency 455 Kc
 Power Consumption (Radio Only)..... RC-270 80 Watts
 RC-269, 271, 271R 90 Watts
 Power Consumption (Radio and Phono) RC-270 95 Watts
 RC-269, 271, 271R 105 Watts

With tone controls in flat position, level and contour controls full clockwise, all measurements (nominal) taken at level control input and 16 ohm output
 Frequency Response — 1W level + 1 db., 30 cps to 15,000 Kc

*Harmonic Distortion — Less than 1% at normal operating levels.

*Intermodulation Distortion — Less than 1% at normal operating levels (60 and 3000 cps. 4:1)

Hum and Noise — 80 db. below rated output

Maximum Power Output at 400 C.P.S. — 14 Watts.

Undistorted Power Output at 400 C.P.S. -- 10 Watts.

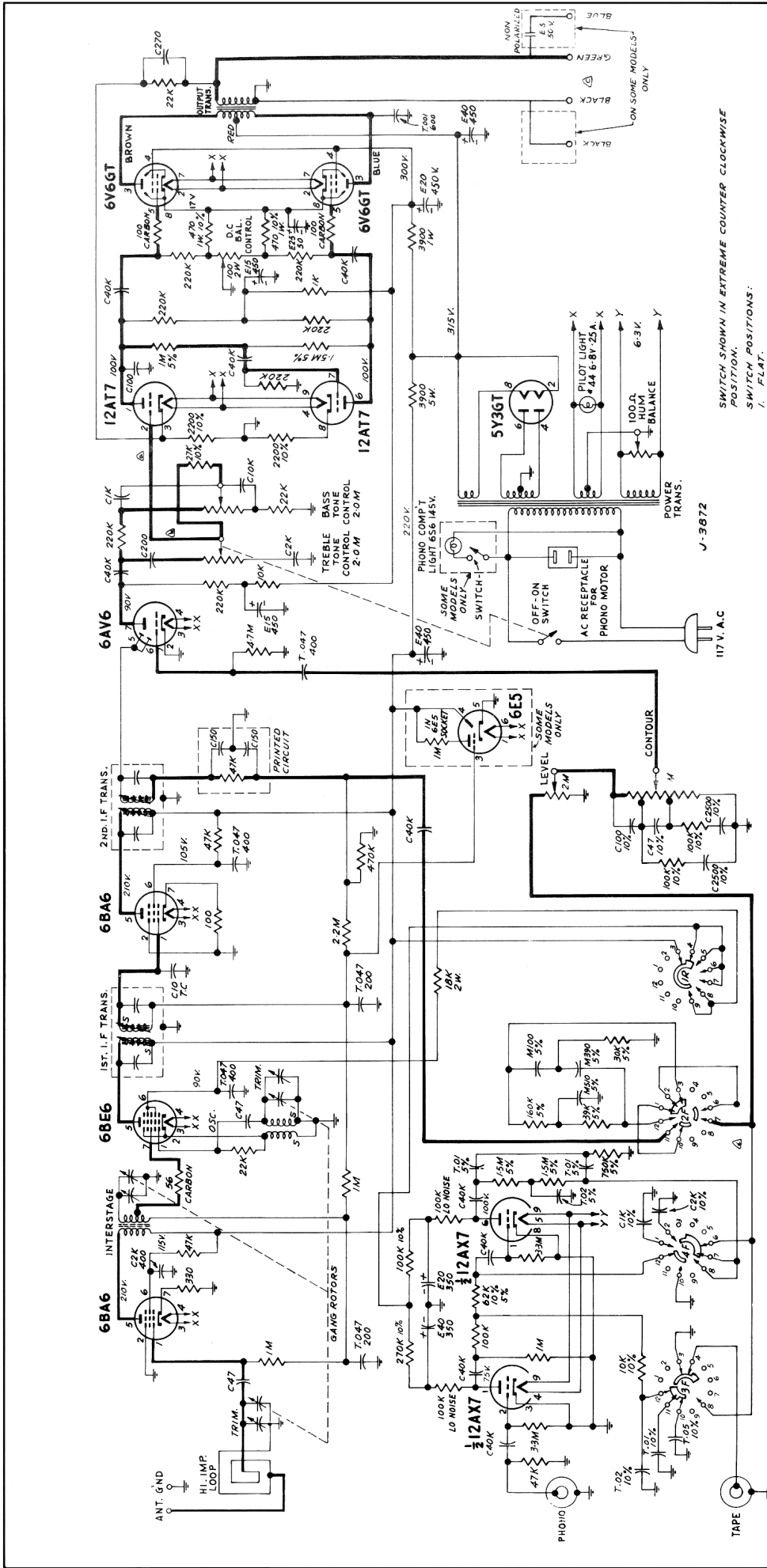
*With matched output Tubes + 5%

When writing for Service Information or Parts please quote Model Number, Serial Number and finish of cabinet.

T. EATON CO LIMITED
 CANADA

J-4027 (750-157B.)

SCHEMATIC FOR MODELS RC-269, RC-271 and RC-271R



SWITCH SHOWN IN EXTREME COUNTER CLOCKWISE POSITION.

SWITCH POSITIONS:

1. FLAT.
2. R. I. A. A.
3. 7B. EARLY MODEL.
4. RADIO. 10 KC FILTER OUT.
5. RADIO. 10 KC FILTER IN.

ALL VOLTAGES ±10% MEASURED TO B- WITH 20,000 OHM/VOLT METER, 117 VOLT 60 CYCLE LINE AND ZERO SIGNAL INPUT.

STEP	APPLY SIGNAL AT KC	THRU SHIELD TO DUMMY	SET GANG ADJUST AT	NOMINAL SENSITIVITY FOR 300 MILLIWATTS OUTPUT
1	455	.05	2ND. I.F.	160 μV.
2	686	.05	MIX. CAPACITY	160 μV.
3	1460	.05	OSC. AND ANTENNA 2ND. I.F. CAPACITY	160 μV.
4	1460	ANT.	ANTENNA 2ND. I.F. CAPACITY	6 μV.
5	600	ANT.	INTERSTAGE CAPACITANCE	12 μV.

COMPONENT VALUES

RESISTORS: HALF WATT UNLESS OTHERWISE SPECIFIED.
 20% TOLERANCE UNLESS OTHERWISE SPECIFIED.
 M = 1000,000 OHMS
 K = 1000 OHMS
 C = CERAMIC, FOLLOWED BY CAPACITY IN MFD AND D.C.M.V.
 E = ELECTROLYTIC, FOLLOWED BY CAR IN MFD AND D.C.M.V.
 M = MICRA, FOLLOWED BY CAR IN MFD. & TOL. IF CRITICAL.
 T.C. = TEMPERATURE COMPENSATED.

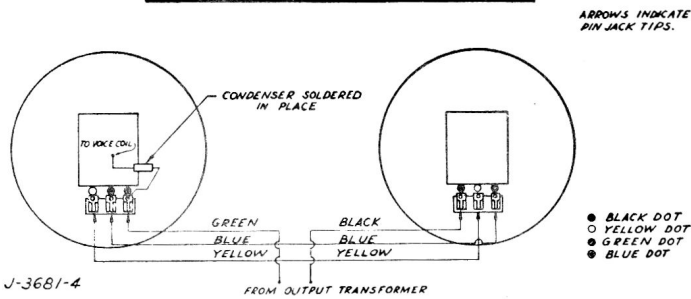
CONNECT DC VOLTMEETER ACROSS OUTPUT TRANSFORMER PRIMARY AND ADJUST D.C. BALANCE CONTROL FOR ZERO VOLTAGE.

C.N. No.	DATE	CHANGE	SYN. CHK.
100-700	7-17-44	SELECTED 50 AND 8 COMBINED (S) BY WESTON (S)	W
100-700	7-17-44	BLACK 4 WIREN. LEADS INTERCHANGED	C
100-700	7-17-44	WIRE BELTAGE IN TRANS. TO 4 IN. 2.7 CAP. FROM 100-6750	K

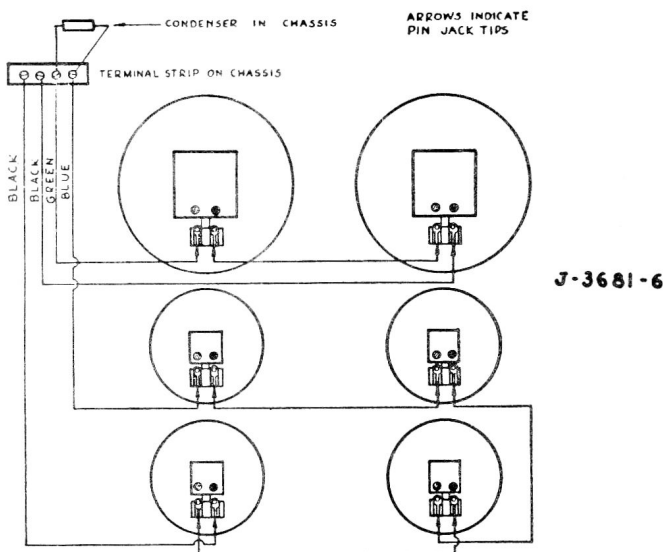
HUM BALANCER

A Hum-Balancer has been incorporated in this receiver to balance out hum which may be present because of the high gain and wide frequency response of the audio portion of the receiver. It may be found necessary to re-adjust the hum balancer for minimum hum reproduction when the 12AX7 tube is replaced. Set the tone control in its extreme left hand position, turn the selector switch to phono position, the volume control full on and adjust the hum-balancer for minimum hum level.

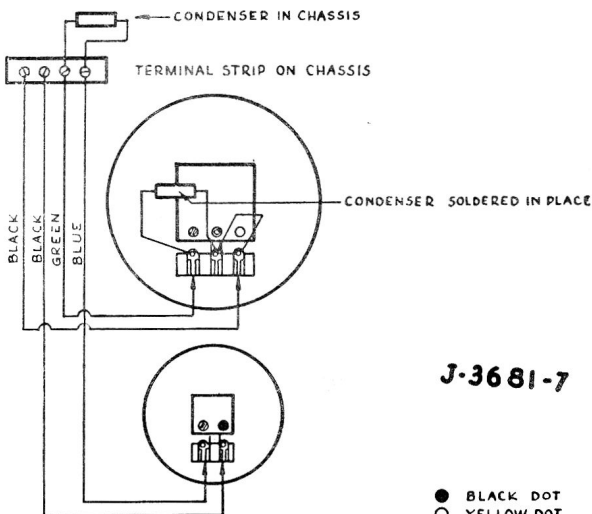
SPEAKER CONNECTIONS



RC-270 To 16 ohm Voice Coil



RC-271, RC-271R To 16 ohm Voice Coil



RC-269 To 8 ohm Voice Coil

REPLACEMENT PARTS LIST

- A-3004.....Dial Scale RC-269, RC-271, RC-271R
- A-3009.....Dial Scale RC-270
- B-4123-10.....Drive Shaft
- G-503.....Electrolytic 40 and 20 ufd x 450 DC WV
25 ufd x 50 DC WV
- G-522.....Electrolytic 40, 40 and 20 ufd x 375 DC WV
- G-591.....Electrolytic 15 and 15 ufd x 450 DC WV
- G-604-1.....Electrolytic 5 ufd x 20 V. Non-polarized on
RC-269, RC-271, RC-271R only
- H-527-1.....Resistor Wirewound 2200 ohm + 10% 5W
- H-536-7.....Resistor Wirewound 4700 ohm + 10% 5W
- H-536-13.....Resistor Wirewound 3900 ohm + 10% 5W
- H-537-3.....Resistor Deposited Carbon — Low Noise
100,000 ohm + 10% 1/2 Watt
- K-771A.....Pilot Lamp 6 - 8V .25A #44 RC-269, RC-270
- K-839.....Pilot Lamp 6.3V .15A #47 RC-271, RC-271R only
- K-1394.....Printed Circuit — Filpec
- LK-601-1.....Power Transformer 60 cycle
- LK-602-1.....Power Transformer 25 cycle
- LK-603-1.....Output Transformer 8 ohm Voice Coil RC-269
only
- LK-605-1.....Output Transformer 16 ohms Voice Coil RC-270,
RC-271, RC-271R
- MP-1204-50.....Pointer and Slider Assembly
- P-2704-1.....Coil — BC Interstage RC-269, RC-271, RC-271R
- P-2876-1.....Coil — BC Oscillator RC-270
- P-2876-2.....Coil — BC Oscillator RC-269, RC-271, RC-271R
- P-2923.....I.F. Transformer — 1st and 2nd
- P-2944-1.....Loop Antenna Assembly RC-269, RC-271,
RC-271R
- P-2944-2.....Loop Antenna Assembly RC-270
- Q-341-3.....Switch—Selector RC-269, RC-271, RC-271R
- Q-343-1.....Switch—Selector RC-270
- R-375-10.....Control—Bass Tone
- R-376-10.....Control—Treble Tone
- R-391-1.....Potentiometer 100 ohm—Hum & DC Balance on
RC-269, RC-271, RC-271R. Hum Balance on
RC-270
- R-442-1.....Control—Level and Contour
- V-393-1.....Gang Condenser—Geared — Three Section RC-
269, RC-271, RC-271R
- V-394-1.....Gang Condenser—Two Section RC-270

INSTALLATION REPLACEMENT PARTS LIST

	RC-269	RC-270	RC-271 RC-271R
Control Panel	A-3005	A-3010	A-3019
Glass Retaining Strip—Top	B-4706-1	B-4706-2	B-4706-3
Glass Retaining Strip—Bottom	C-1017-1	C-1024-1	C-1017-2
Speakers—RC-269—(1) 8" P.M. K-1546			
			(1) 12" Triaxial K-1682
Speakers—RC-270—(1) 12" Coaxial K-1653			(1) 12" Coaxial K-1659
Speakers—RC-271, 271R—			
			(2) 10" P.M. K-1521
			(4) 5" P.M. K-1644
N-484-1 Knob—Front—Dual Knob			
N-485-1 Knob—Rear—Dual Knob			
N-486-1 Knob—Tuning			
N-486-2 Knob—Bass Tone, Treble Tone, Selector Switch			
	RC-269	RC-270	RC-271 RC-271R
Garrard RC-88 Changer			
60 Cycle 3 Speed	P-2926-2	P-2926-3	P-2926-2
Garrard RC-88 Changer			
25 Cycle 3 Speed	P-2927-2	P-2927-3	P-2927-2
Garrard RC-88 Changer			
60 Cycle 4 Speed			P-3000-3
Garrard RC-88 Changer			
25 Cycle 4 Speed			P-3001-3
K-1529-1 G.E. Cartridge			
Replacement Needles			
LP—RPJ—01S (Sapphire) — * RPJ—01D (Diamond)			
78 —RPJ—03S (Sapphire)			

* This is not supplied in original equipment, it may be procured as a replacement for RPJ—01S needle if a diamond stylus is preferred.