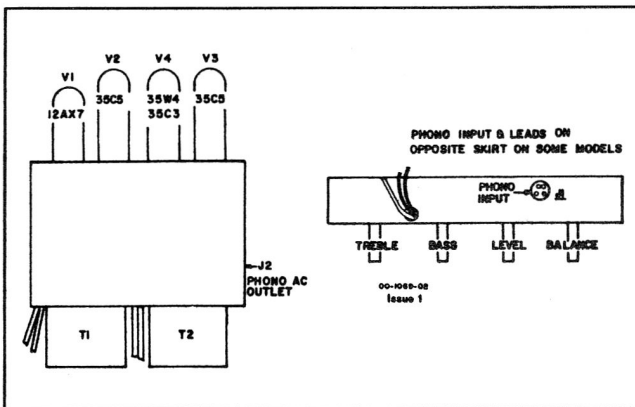
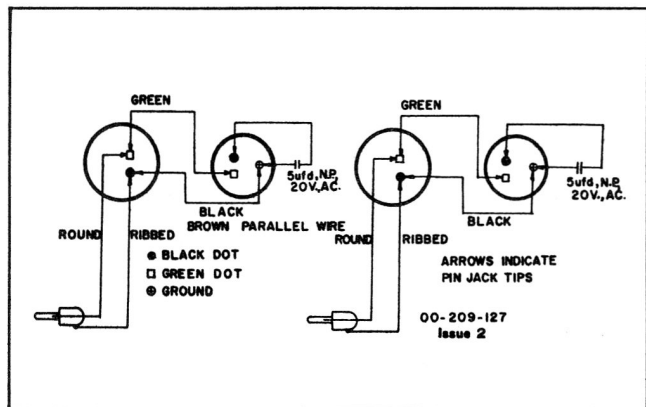


VIKING Electric Phonograph

For Operation on 110-120 Volts A.C. Cycle as Marked.

SPECIFICATIONS — Maximum Power Output . . . 3 Watts Power Consumption . . . 38 Va.



SERVICE REPLACEMENT PARTS LIST - PAPS-648

FINAL ASSEMBLY

| | |
|--------------|--------------------------------|
| 12-25050-54 | Portable Phonograph Case—Black |
| 13-146-01 | Legs |
| 13-166-02 | Motor Board |
| 13-149-03 | Curtain |
| 16-120047-01 | 45 R.P.M. Inserts |
| 19-70003-05 | Speaker—6 x 9" P.M.—8 ohm V.C. |
| 19-30003-05 | Speaker—3½" P.M.—8 ohm V.C. |
| 53-618-04 | Trim Strip (on Speaker case) |
| 30-240-02 | Escutcheon Panel |
| 35-1219-01 | Leg Mounting Bracket |
| 53-615-02 | Handle Rod |
| 53-618-03 | Trim Strip |
| 53-624-18 | Knob |

CHASSIS ASSEMBLY

| | | |
|--------|-------------|---|
| T1, T2 | 24-80015-02 | Audio Output Transformer —8 ohm V.C. |
|--------|-------------|---|

| | | |
|----------|-----------|--|
| C16 | 44-40-04 | Electrolytic—Single —50 ufd x 25 V |
| C15 | 44-74-01 | Electrolytic—Triple —40, 40, 70 ufd x 150 V |
| R1 | 41-38-02 | Balance Control—5 meg |
| R12, R13 | 41-120-07 | Treble Control—500 K |
| R14, R15 | 41-121-06 | Bass Control—2 meg |
| R3, R6 | 41-166-01 | Level Control—1 meg |

CHANGER ASSEMBLY

| | |
|--------------|---|
| 16-90024-06 | Garrard Autoslim Changer |
| 16-250017-10 | Replacement Cartridge —Astatic 86TSBD |
| 16-120028-02 | 78 Replacement Stylus Astatic N8-3S |
| 16-120028-05 | LP Replacement Stylus Astatic N7-7D |
| 16-220002-03 | Phono Motor Assembly—25 cycle (25 cycle models only) |
| 16-120050-02 | 50 cycle Hub (50 cycle models only) |

PICKUP STYLUS PRESSURE

The stylus pressure must not exceed 8 grams and it is strongly recommended that a check be made occasionally with a stylus pressure gauge. Adjust for 6-8 grams pressure. Adjustments may be made by repositioning the pick-up balance spring (in rear of tone arm) in the various adjusting holes provided until the correct pressure is obtained. If stylus pressure is set low or if the unit is not levelled in its location, skipping of the needle across the record grooves will occur from any movement of the cabinet or changer. The solution to this problem is to readjust stylus pressure to a point not exceeding 8 grams until the condition is correct.

All information printed in this leaflet is up to date as of June 15, 1963. Subsequent changes are covered by bulletin.

CAUTION FOR SERVICEMEN

Any serviceman working with this chassis when it is out of the cabinet should take special care not to come in contact with any ground connections.

When writing for Service Information and/or parts, please quote model and Serial Number as found on the license label. Always order service parts by part number. Part numbers are positive identification which ensures fast service and avoids unnecessary delays.

EATON'S OF CANADA

