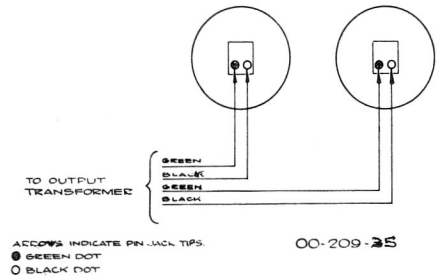
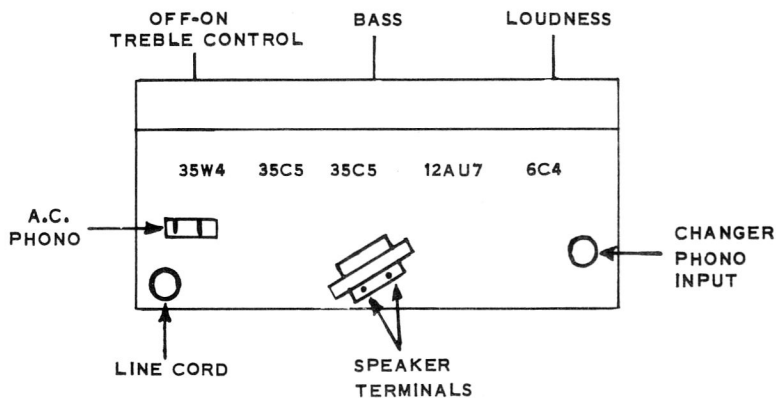


— FOR THE —

VIKING Portable Electric Phonograph



SPECIFICATIONS — Undistorted Power Output.....	1.5 WATTS
Maximum Power Output.....	2.5 WATTS
Power Consumption	32 WATTS

SERVICE REPLACEMENT PARTS LIST

16-90008-01	RC 121 MK 2 GARRARD CHANGER	53-275-01	BASE KNOB
	45 SPEED 60 CYCLE	53-275-03	BASE VOLUME KNOB
16-120021-01	45 RPM SPINDLE		<u>Chassis Parts</u>
34-61-01	PHONOPLUG AND SHELL	34-60-01	PHONO SOCKET 3 PRONG
34-62-01	PHONO PLUG 3 PRONG	34-13-01	A.C. RECEPTACLE
16-250003-01	CARTRIDGE ASTATIC 312 TB	44-61-01	ELECTROLYTIC 40 40, AND 30X 150V
12-15470-51	PORTABLE PHONO CASE - TAN	27-2-01	PILOT LAMP # 47
12-15470-52	PORTABLE PHONO CASE - OXBLOOD	41-27-04	CONTROL LOUDNESS
13-52-01	MOTOR BOARD	41-3-08	CONTROL BASS
13-53-01	CURTAIN	41-105-01	CONTROL TREBLE & SWITCH
19-60003-01	6" PM SPEAKER (2)	44-11-04	ELECTROLYTIC 25 MFD X 25 V SINGLE
53-221-01	METAL GRILLE (2)	44-5-01	ELECTROLYTIC 5 MFD X 20 V SINGLE
53-230-01	VENT PLUG (4)	48G-588	COND.PAPER TUB. 047-1100V
53-231-01	JEWEL	24-80020-03	AUDIO OUTPUT TRANSFORMER
53-141-01	VIKING NAME PLATE		
53-275-02	OFF-ON-TREBLE KNOB		

CAUTION FOR SERVICEMEN

Any serviceman working with this receiver when it is out of the cabinet should take special care not to come in contact with any ground connections.

When writing for Service Information and/or parts, please quote model and Serial Number as found on the license label. Always order service parts by part number. Part numbers are positive identification which ensures fast service and avoids unnecessary delays.

