

\* FASHION LOOP OF SEVERAL TURNS OF WIRE AND RADIATE SIGNAL INTO LOOP OF RECEIVER. ADJUST FOR MAXIMUM OUTPUT.

INT. FREQ. 455 KC.

COMPONENT VALUES

RESISTORS: HALF WATT UNLESS OTHERWISE NOTED.  
20% TOLERANCE, UNLESS OTHERWISE NOTED.  
K = 1000 OHMS.

M = 1000,000 OHMS.

CONDENSERS: T=TUBULAR, FOLLOWED BY CAP IN MFD AND D.C. IN V.  
E=ELECTROLYTIC, FOLLOWED BY CAP IN MFD AND V. IN CRITICAL.  
C=CERAMIC, FOLLOWED BY CAP IN MFD AND V. IN CRITICAL.  
M=MICA, FOLLOWED BY CAP IN MFD AND V. IN CRITICAL.

ALL DETAILS SHOWN IN DOUBLE OUTLINED SECTIONS ARE USED ON SOME MODELS ONLY.

ALL VOLTAGES  $\pm 10\%$  MEASURED TO B- WITH 20,000 OHM/VOLT METER, 117V DLT, 60 CYCLE LINE AND ZERO SIGNAL INPUT.

TV - PHONO - RADIO SWITCH SHOWN IN TV POSITION.

(COUNTERCLOCKWISE)

ALIGNMENT AND SENSITIVITY

SIGNAL GENERATOR MODULATED 30% AT 400 CY.

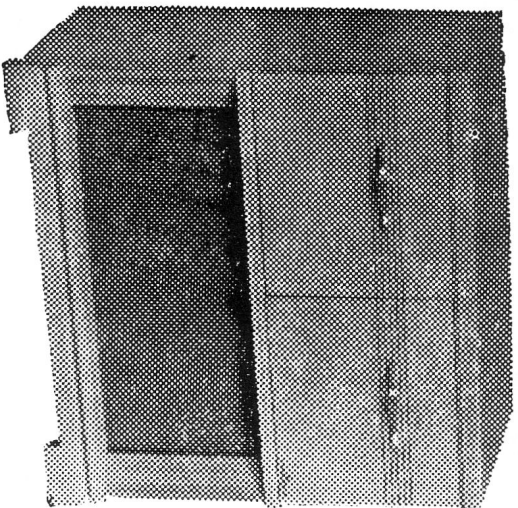
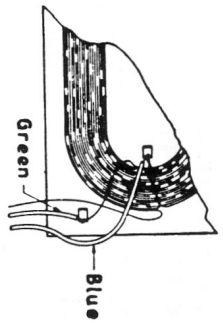
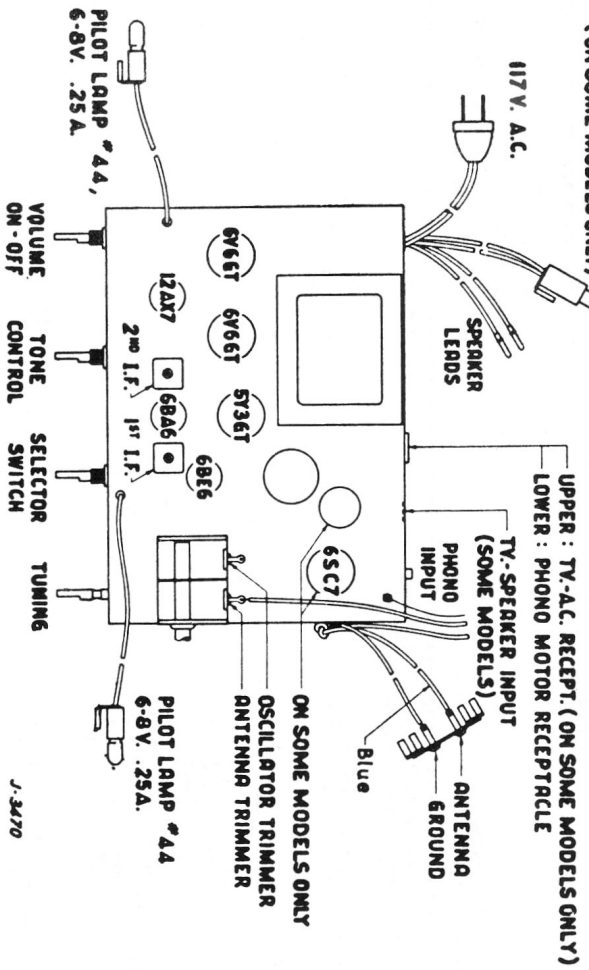
STEP	APPLY SIGNAL AT KC.	THRU SERIES DUMMY	SET GANG AT	ADJUST FOR MAX OUTPUT FOR 500 MILLIWATTS OUTPUT	NOMINAL SENSITIVITY
1	455	6BA6 #1 PIN	MIN.	OSC TRIM.	3400 $\mu$ V
2	455	6BE6 #7 PIN	CAP.	OSC TRIM.	90 $\mu$ V
3	1460	6BE6 #7 PIN	MIN.	OSC TRIM.	—
4	1460	ANT.	MIN.	OSC TRIM.	120 $\mu$ V/M
5	600	ANT.	MIN.	OSC TRIM.	320 $\mu$ V/M

- Standard Broadcast Range ..... 585 Kc. - 1650 Kc.
- Intermediate Frequency ..... 455 Kc.
- Power Consumption (Radio Only) ..... 70 Watts
- Power Consumption (Radio & Phono) ..... 85 Watts
- Undistorted Output ..... 6.0 Watts
- Maximum Power Output ..... 9.0 Watts

# VIKING 55-148

PILLOT LAMP # 44, 6-8V .25A  
(ON SOME MODELS ONLY)

117 V. A.C.

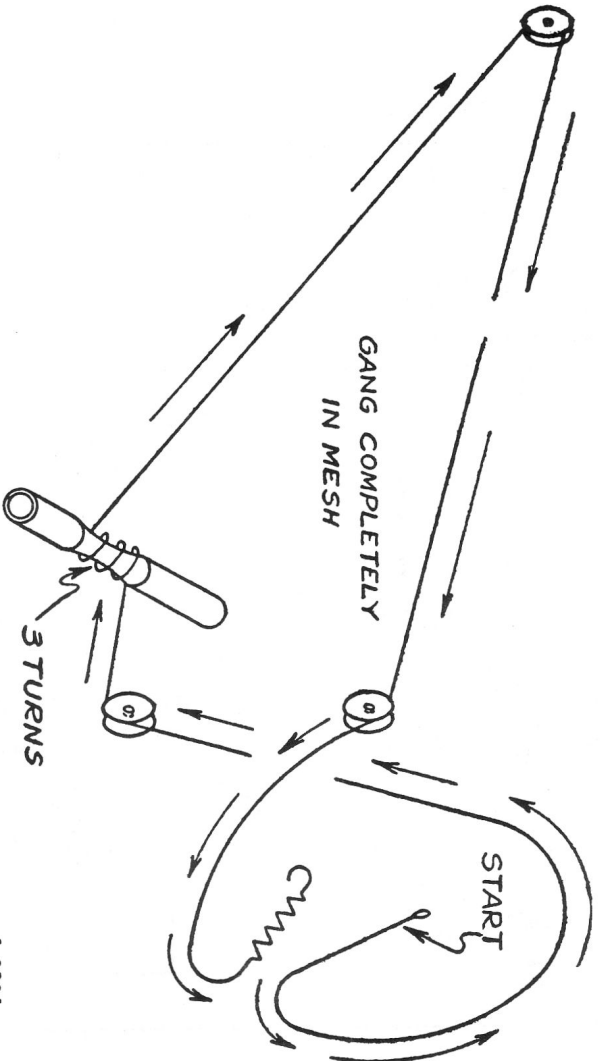


# Model 55-148

## CHASSIS LAYOUT CHART

### ALIGNMENT AND SENSITIVITY SIGNAL GENERATOR MODULATED 30% AT 400 CY.

STEP	APPLY SIGNAL AT KC.	TO	THRU SERIES DUMMY	SET GANG AT	ADJUST FOR MAX OUTPUT	NOMINAL SENSITIVITY FOR 500 MILLIVOLTS OUTPUT
1	455	6BA6 #1 PIN	.05	MIN. CAP.	1/ROW COILS	3400 $\mu$ V
2	455	6BE6 #7 PIN	.05	MIN. CAP.	1/ROW COILS	90 $\mu$ V
3	1460	6BE6 #7 PIN	.05	1460 KC.	B C OSC TRIM.	—
4	1460	ANT.	*	1460 KC.	B C ANT TRIM.	120 $\mu$ V/M
5	600	ANT.	*	600 KC.		320 $\mu$ V/M



## STRINGING DETAIL

J-3034