

\* FASHION LOOP OF SEVERAL TURNS OF WIRE AND RADIATE SIGNAL INTO LOOP OF RECEIVER. ADJUST FOR MAXIMUM OUTPUT.

INT. FREQ. 455 KC.

COMPONENT VALUES

RESISTORS: HALF WATT UNLESS OTHERWISE NOTED.  
20% TOLERANCE, UNLESS OTHERWISE NOTED.  
K = 1000 OHMS.

M = 1000,000 OHMS.

CONDENSERS: T=TUBULAR, FOLLOWED BY CAP IN MFD AND D.C. IN V.  
E=ELECTROLYTIC, FOLLOWED BY CAP IN MFD AND VOLT.  
C=CERAMIC, FOLLOWED BY CAP IN MFD AND VOLT.  
M=MICA, FOLLOWED BY CAP IN MFD AND VOLT.

ALL DETAILS SHOWN IN DOUBLE OUTLINED SECTIONS ARE USED ON SOME MODELS ONLY.

ALL VOLTAGES  $\pm 10\%$  MEASURED TO B- WITH 20,000 OHM/VOLT METER, 117VOLT, 60 CYCLE LINE AND ZERO SIGNAL INPUT.

TV - PHONO - RADIO SWITCH SHOWN IN TV POSITION.

(COUNTERCLOCKWISE)

ALIGNMENT AND SENSITIVITY

SIGNAL GENERATOR MODULATED 30% AT 400 CY.

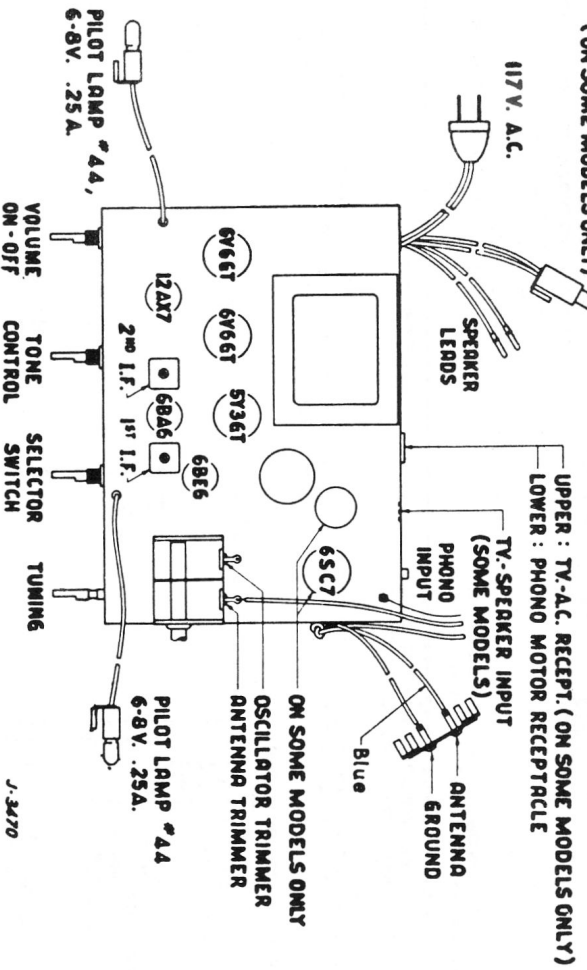
| STEP | APPLY SIGNAL AT KC. | THRU SERIES DUMMY | SET GANG AT | ADJUST FOR MAX OUTPUT FOR 500 MILLIWATTS OUTPUT | NOMINAL SENSITIVITY |
|------|---------------------|-------------------|-------------|---|---------------------|
| 1    | 455                 | 6BA6 #1 PIN       | MIN.        | OSC TRIM.                                       | 3400 $\mu$ V        |
| 2    | 455                 | 6BE6 #7 PIN       | CAP.        | OSC TRIM.                                       | 90 $\mu$ V          |
| 3    | 1460                | 6BE6 #7 PIN       | MIN.        | OSC TRIM.                                       | —                   |
| 4    | 1460                | ANT.              | MIN.        | OSC TRIM.                                       | 120 $\mu$ V/M       |
| 5    | 600                 | ANT.              | MIN.        | OSC TRIM.                                       | 320 $\mu$ V/M       |

- Standard Broadcast Range ..... 535 Kc. - 1650 Kc.
- Intermediate Frequency ..... 455 Kc.
- Power Consumption (Radio Only) ..... 70 Watts
- Power Consumption (Radio & Phono) ..... 85 Watts
- Undistorted Output ..... 6.0 Watts
- Maximum Power Output ..... 9.0 Watts

# VIKING 55-147

PILOT LAMP # 44, 6-8V .25A  
(ON SOME MODELS ONLY)

117 V. A.C.

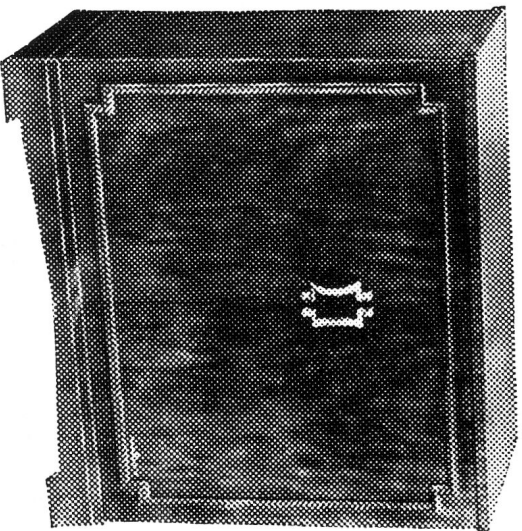
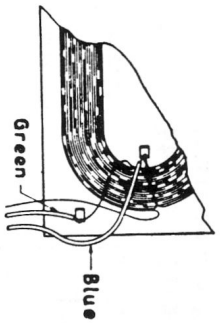


J-3470

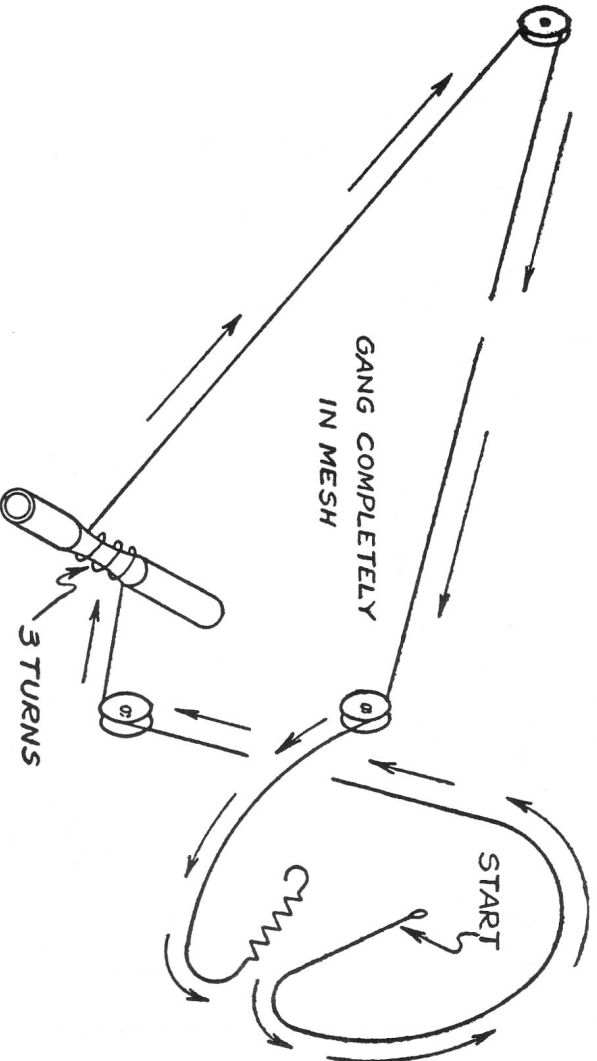
### CHASSIS LAYOUT CHART

| STEP | APPLY SIGNAL |             | THRU SERIES DUMMY | SET GANG AT | ADJUST FOR MAX OUTPUT | NOMINAL SENSITIVITY FOR 500 MILLIWATTS OUTPUT |
|------|--------------|-------------|-------------------|-------------|-----------------------|---|
|      | AT KC.       | TO          |                   |             |                       |   |
| 1    | 455          | 6BA6 #1 PIN | .05               |             | 1/ROW COILS           | 3400 $\mu$ V                                  |
| 2    | 455          | 6BE6 #7 PIN | .05               | MIN. CAP.   | 1/ROW COILS           | 90 $\mu$ V                                    |
| 3    | 1460         | 6BE6 #7 PIN | .05               | 1/460 KC.   | B.C. OSC TRIM.        | —   |
| 4    | 1460         | ANT.        | *                 | 1/460 KC.   | B.C. ANT TRIM.        | 120 $\mu$ V/M                                 |
| 5    | 600          | ANT.        | *                 | 600 KC.     |                       | 320 $\mu$ V/M                                 |

ALIGNMENT AND SENSITIVITY  
SIGNAL GENERATOR MODULATED 30% AT 400 CY.



# Model 55-147



### STRINGING DETAIL

J-3034