

# VIKING 53-123, 53-128

ALL VOLTAGES  $\pm 10\%$  MEASURED TO B - WITH 20,000 OHM/VOLT METER, 117VOLT, 60 PHONO-RADIO SWITCH SHOWN IN PHONO (COUNTERCLOCKWISE) POSITION.

INDICATOR LAMP 6-8V. 25A.  
 DIAL LIGHTS 6-8V. 25A.  
 PHONO MOTOR RECEPTACLE  
 OFF-ON SWITCH ON VOL. CONT.

INT. FREQ. 455 KC.

COMPONENT VALUES

RESISTORS: HALF WATT, UNLESS OTHERWISE NOTED.  
20% TOLERANCE, UNLESS OTHERWISE NOTED.

K = 1000 OHMS.  
M = 1000,000 OHMS.

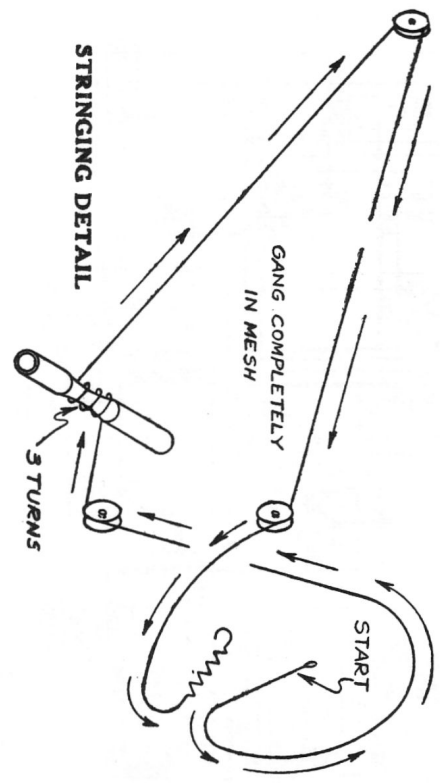
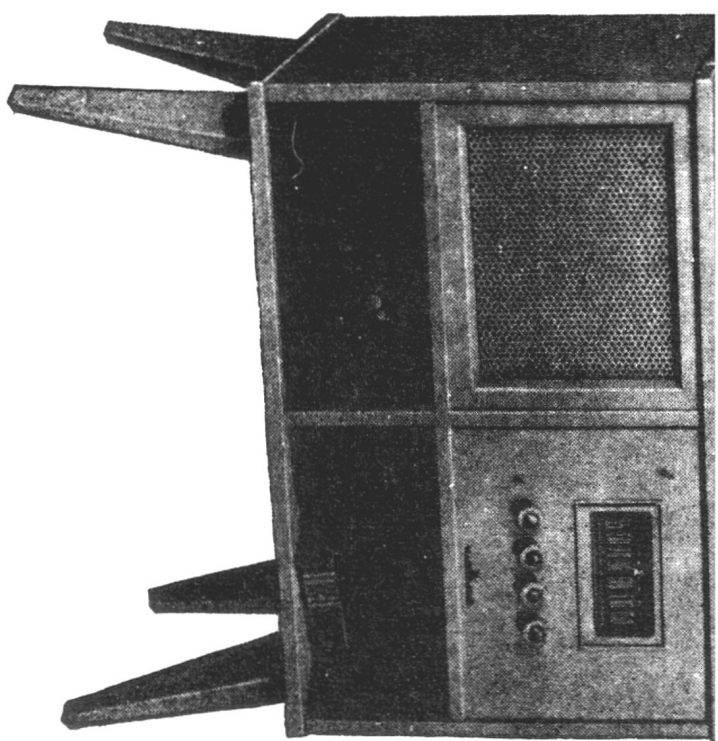
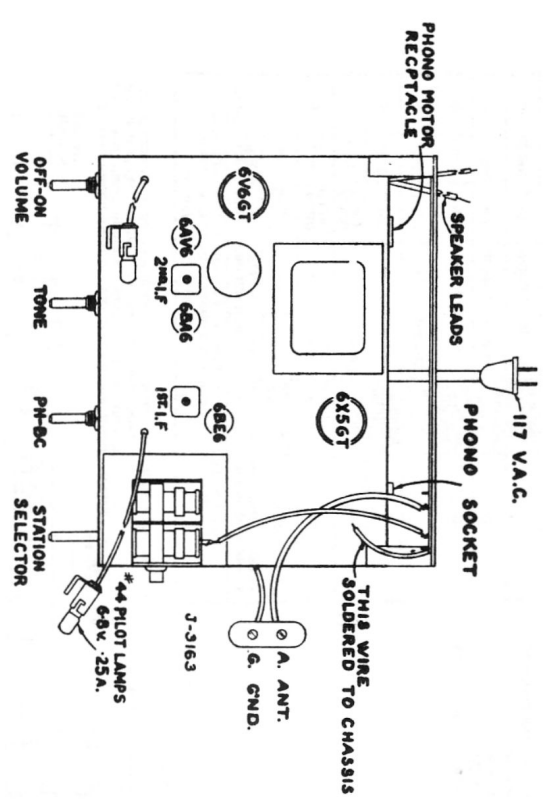
CONDENSERS: T = TUBULAR, FOLLOWED BY CAP. IN MFD. AND D.C. IN V.  
E = ELECTROLYTIC, FOLLOWED BY CAP. IN MFD. AND D.C. IN V.  
C = CERAMIC, FOLLOWED BY CAP. IN MMFD. & TOL. IF CRITICAL.  
M = MICA, FOLLOWED BY CAP. IN MMFD. & TOL. IF CRITICAL.

ALIGNMENT AND SENSITIVITY

SIGNAL GENERATOR MODULATED 30% AT 400 CY.

STEP	APPLY SIGNAL AT K.C.	THRU SERIES TO DUMMY	SET GANG AT	ADJUST FOR MAX. OUTPUT	NOMINAL SENSITIVITY FOR 500 MILLIWATTS OUTPUT.
1	455	6B4G #1 PIN	.05	2ND I.F. IRON CORES	2000 μV
2	455	6BE6 #1 PIN	.05	MIN. CAP. IRON CORES	50
3	1460	6BE6 #7 PIN	.05	B.C. OSC. TRIM.	—
4	1460	ANT.	*	B.C. ANT. TRIM.	80 μV/M.
5	600	ANT.	*	600 KC.	140 μV/M.

\* FASHION LOOP OF SEVERAL TURNS OF WIRE AND RADIATE SIGNAL INTO LOOP OF RECEIVER. ADJUST FOR MAXIMUM OUTPUT.



SPECIFICATIONS

- Standard Broadcast Range ..... 540 Kc — 1700 Kc
- Intermediate Frequency ..... 455 Kc.
- Power Consumption (Radio & Phono) ..... 42 Watts
- Power Consumption (Radio & Phono) ..... 60 Watts
- Undistorted Output ..... 2.5 Watts
- Maximum Power Output ..... 5.0 Watts