

ALL VOLTAGES ± 10% MEASURED TO B- WITH 20,000 OHM/VOLT METER, 117 VOLT, 60 CYCLE LINE AND ZERO SIGNAL INPUT.
 PHONO-RADIO SWITCH SHOWN IN PHONO (COUNTERCLOCKWISE) POSITION.

VIKING 52-114

ELECTROHOME PROVINCIAL, 52

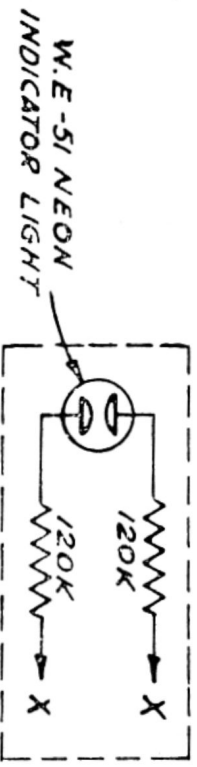
COMPONENT VALUES

RESISTORS: HALF WATT UNLESS OTHERWISE SPECIFIED.
20% TOLERANCE UNLESS OTHERWISE SPECIFIED.
K = 1000 OHMS.

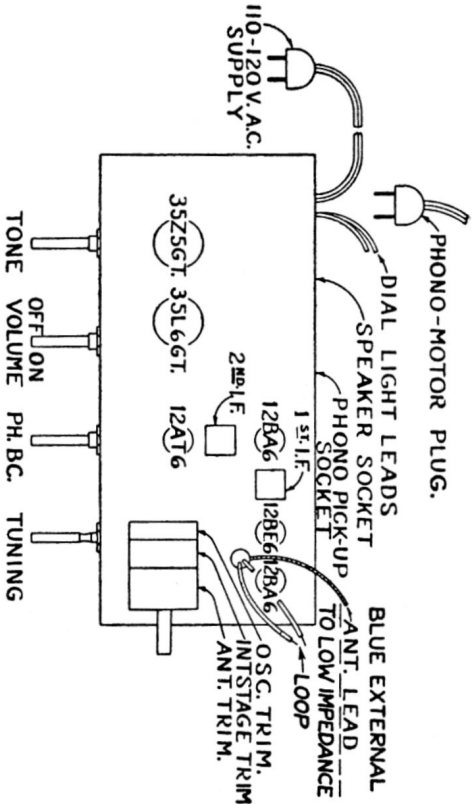
M = 1000,000 OHMS.
CONDENSERS: T = TUBULAR, FOLLOWED BY CAP. IN MFD. AND D.C.W.V.
E = ELECTROLYTIC, FOLLOWED BY CAP. IN MFD. AND D.C.W.V.
C = CERAMIC, FOLLOWED BY CAP. IN MMFD. μ TOL. IF CRITICAL.
M = MICA, FOLLOWED BY CAP. IN MMFD. AND TOL. IF CRITICAL.

ALIGNMENT AND SENSITIVITY

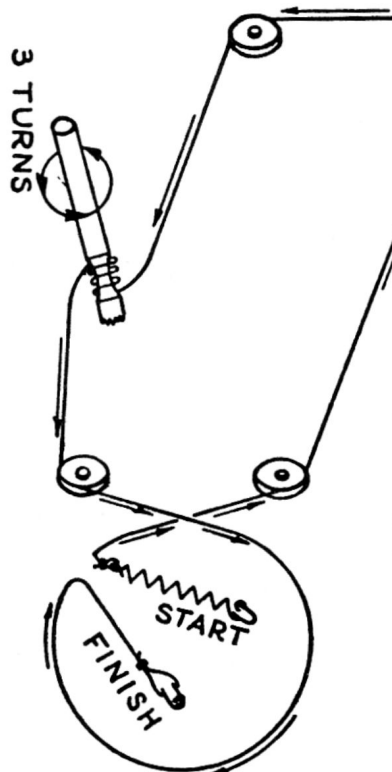
STEP	APPLY SIGNAL AT KC.		THRU SERIES DUMMY	SET GANG AT	ADJUST FOR MAX. OUTPUT	NOMINAL SENSITIVITY FOR 90 MILLIWATTS OUTPUT.
	TO	FROM				
1	455	12BA6 #1 PIN	.05	—	2ND. I.F.	2500 μ W.
2	455	12BE6 #7 PIN	.05	MINIMUM CAPACITY	1ST. I.F. 2ND. I.F.	70
3	1460	12BA6 #1 PIN	.05	1460 KC.	OSC. AND INTERSTAGE TRIMMERS	30
4	1460	ANT.	200 μ fd	1460 KC.	ANTENNA INTERSTAGE TRIMMER	5
5	600	ANT.	200 μ fd	600 KC.	CHECK ONLY	5



USED ON SOME MODELS ONLY.



GANG COMPLETELY IN MESH



STRINGING DETAIL

SPECIFICATIONS

Standard Broadcast Range540 Kc — 1700 Kc	455 Kc.
Intermediate Frequency	32 Watts
Power Consumption (Radio Only)	47 Watts
Power Consumption (Radio and Phono)	1.5 Watts
Undistorted Output	3.5 Watts
Maximum Power Output	

ALL VOLTAGES \pm 10% MEASURED TO B- WITH 20,000 OHM/VOLT METER, 117 VOLT, 60 CYCLE LINE AND ZERO SIGNAL INPUT.
PHONO-RADIO SWITCH SHOWN IN PHONO (COUNTERCLOCKWISE) POSITION.