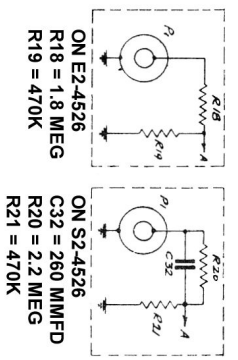


NOTE: ALL MEASUREMENTS TAKEN WITH 20,000 OHM/VOLT VOLTMETER.
NOTE: SWITCH S1 IS SHOWN IN PHONE POSITION, EXTREME COUNTER-CLOCKWISE POSITION.

*C8 = 1700 MMFD 5% FOR E1, E2, E3, E4.
C8 = 2700 MMFD 5% FOR S1, S2, S3.
C8 = 2200 MMFD 5% FOR L1, L2, L3.

WINDING POLARITY
"S" DESIGNATES START OF WINDING
"F" DESIGNATES FINISH OF WINDING



VIKING 46-61, 46-71, 46-91
SERENADER 506, 508
CHASSIS # 2-4526, 2-4526Z, 3-4526, 3-4526Z, 4-4526, 4-4526Z

SERENADER	VIKING	CHASSIS
506	46-61	2-4526
506	46-61	2-4526Z
508	46-91	3-4526
508	46-91	3-4526Z
	46-71	4-4526
	46-71	4-4526Z

