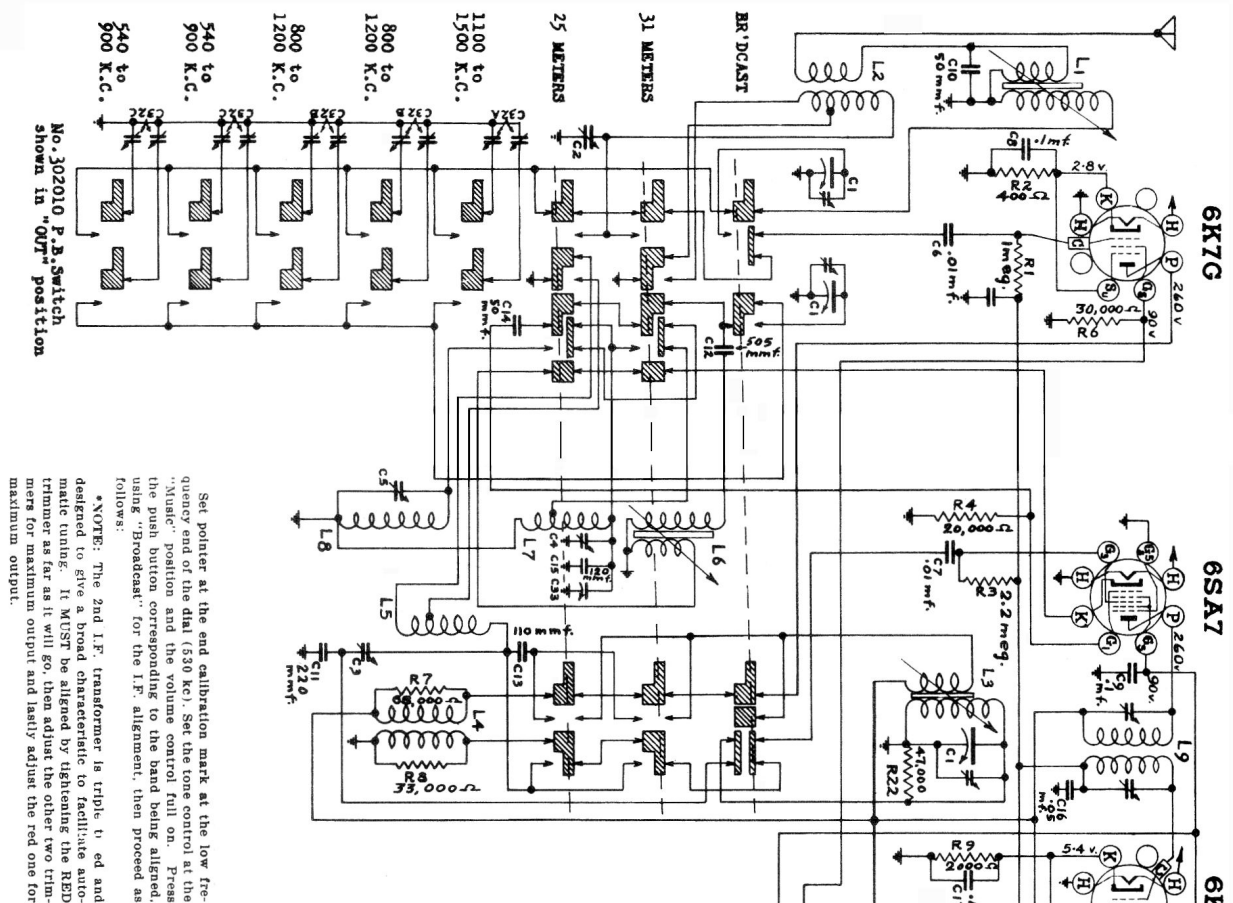
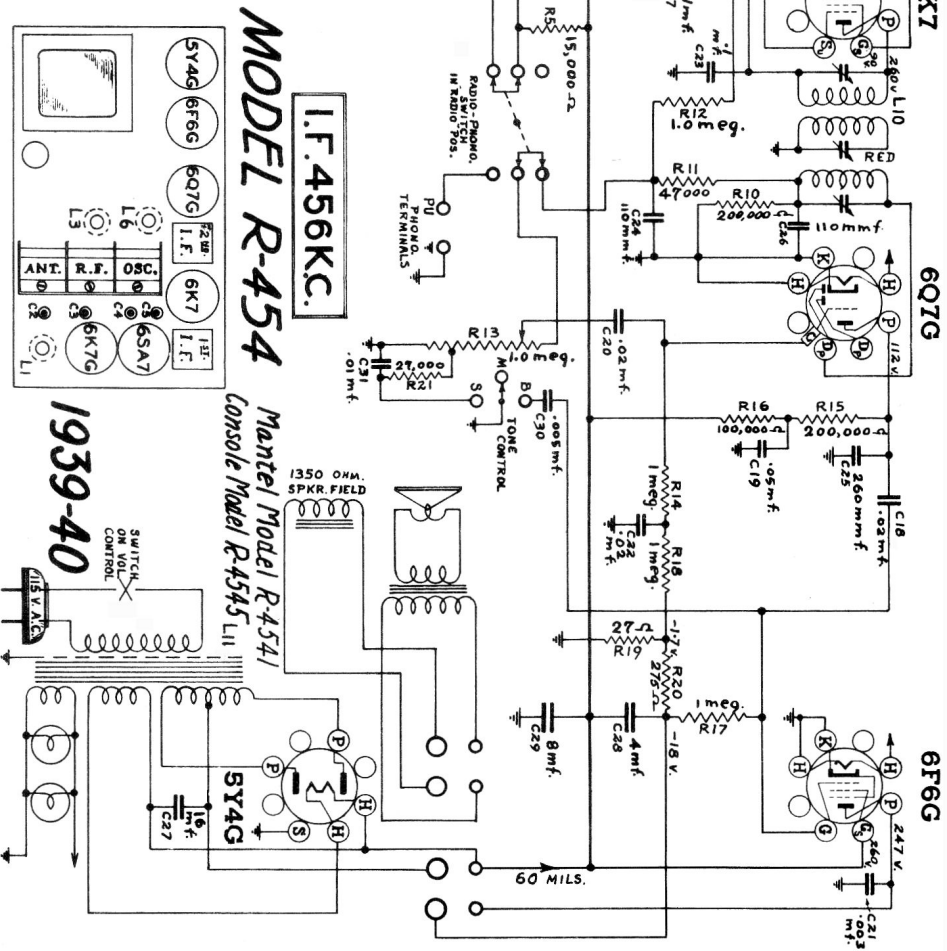


No.	Dummy Antenna	Connection of Signal Generator to Receiver	Signal Generator Frequency	Receiver Setting	Description of Adjustment
1.	1 mfd condenser	Top stator connection of centre section of gang	456 kc	Any point that does not affect signal	Adjust for maximum output and then repeat operation. *See note above.
2.	Standard dummy	Antenna lead	600 kc	600 kc	Oscillator coil L6 Adjust core to bring in signal
3.	Standard dummy	Antenna lead	600 kc	600 kc	RF coil L3 Ant. coil L1 Adjust cores for maximum output



Set pointer at the end calibration mark at the low frequency end of the dial (530 kc). Set the tone control at the "Music" position and the volume control full on. Press the push button corresponding to the band being aligned, using "Broadcast" for the I.F. alignment, then proceed as follows:

*NOTE: The 2nd I.F. transformer is triple tuned and designed to give a broad characteristic to facilitate automatic tuning. It MUST be aligned by tightening the RED trimmer as far as it will go, then adjust the other two trimmers for maximum output and lastly adjust the red one for maximum output.



4.	Standard dummy	Antenna lead	1500 kc	1500 kc	On rear section of GANG	Adjust oscillator circuit to bring in signal.
5.	Standard dummy	Antenna lead	1500 kc	1500 kc	On centre and antenna sections of gang	Adjust R.F. and antenna circuit for maximum output
6.	Standard dummy	Antenna lead	600 kc	600 kc	Repeat operations 2 and 3	
7.	Standard dummy	Antenna lead	1500 kc	1500 kc	Repeat operations 4 and 5	
8.	400 ohm carbon resistor	Antenna lead	9600 kc	9600 kc	C4	Adjust 31 meter oscillator circuit to bring in signal
9.	400 ohm carbon resistor	Antenna lead	11800 kc	11800 kc	C5	Adjust 25 meter oscillator circuit to bring in signal
10.	400 ohm carbon resistor	Antenna lead	11700 kc	11700 kc	C3	Adjust RF circuit for maximum output while rocking gang
11.	400 ohm carbon resistor	Antenna lead	11900 kc	11900 kc	C2	Adjust antenna circuit for maximum output while rocking gang

NOTE 1: A 200 mmf mica condenser may be substituted for the standard dummy antenna.

NOTE 2: Unless the signal generator used can be absolutely guaranteed to be accurate in frequency calibration, it is wise to use a broadcasting station of known frequency to set the two band spread oscillator circuits to the dial scale. VIZ: Operations 8 and 9.

NOTE 3: Use the weakest readable signal for all alignment operations.