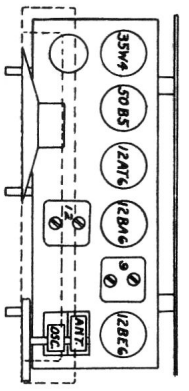
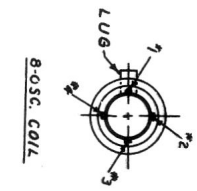


NOTE: ALL VOLTAGES MEASURED FROM TUBE SOCKET TO B- WITH METER OF 1,000 OHMS PER VOLT ON HIGHEST READABLE RANGE.

NOTE: GROUNDING OF CENTRE STUD ON TUBE SOCKETS 12BE6, 12BA6 & 12AT6 IS NECESSARY TO REDUCE CAPACITY COUPLING BETWEEN OTHER PINS. OSCILLATION MAY RESULT IF THIS GROUND IS OMITTED.

1949-50



IF = 455KC

ALIGNMENT:

To align the chassis a well shielded oscillator and a suitable output meter are required. The meter should be connected to speaker coil terminals. The volume control should be set to full on position and tone control turned to high position. Use the weakest possible signal which will give a readable output. Proceed as shown in the table.

No.	Dummy Antenna	Connection of Signal Gen. to Receiver	Signal Gen. Frequency	Receiver Dial Setting	Trimmers To Be Adjusted	Description of Adjustment
1.	.1 mfd. condenser	Stator of Ant. section of Gang.	455 Kc.	Gang. open	2nd I.F., 1st I.F.	Peak both transformers for maximum output & repeat until no further output is obtained.
2.	.1 mfd. condenser	Stator of Ant. section of Gang.	1500 Kc.	1500 Kc.	Osc. Trimmer on Gang.	Adjust to bring in signal.
3.	Standard Dummy or 200 mmfd. condenser	Ant. Wire	1500 Kc.	1500 Kc.	Ant. Trimmer on Gang.	Adjust for maximum output.

AC-DC

MODEL

R-580