

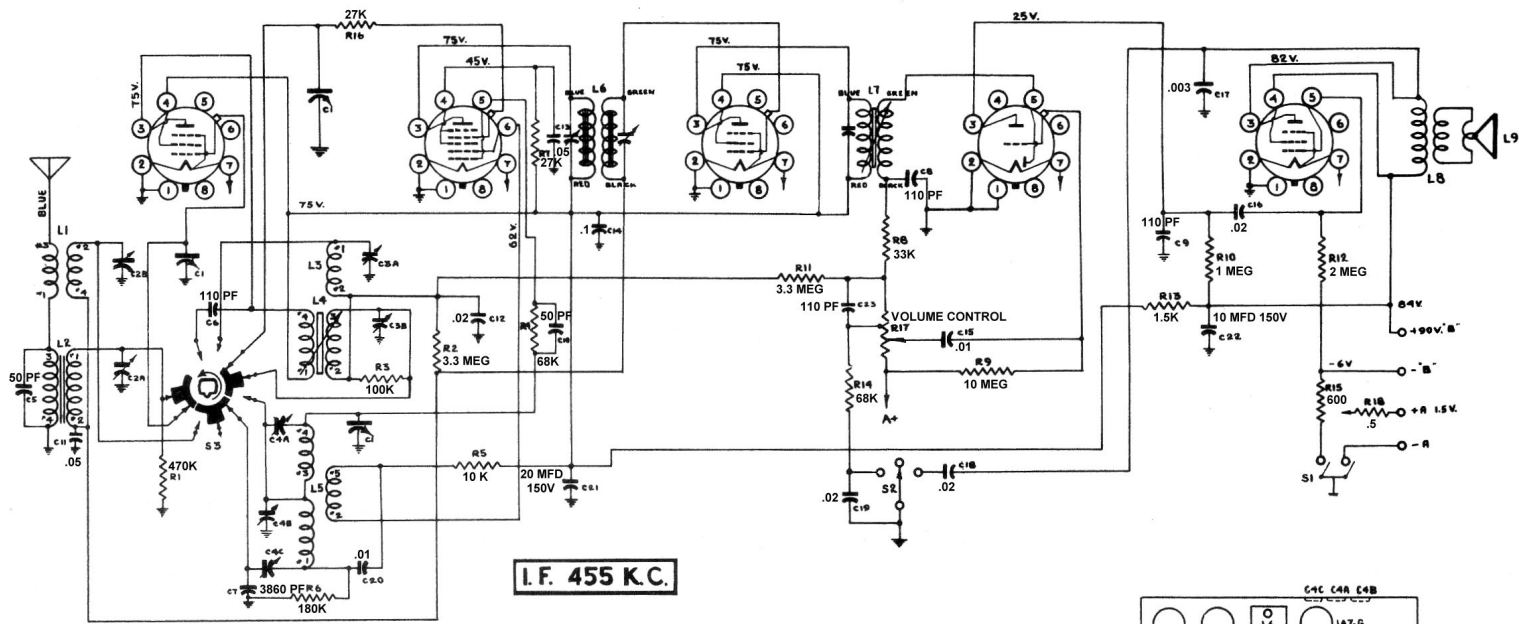
IN56T/G

1A7GT/G

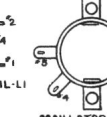
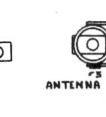
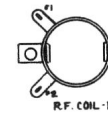
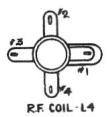
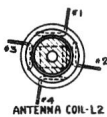
IN56T/G

IN56T/G

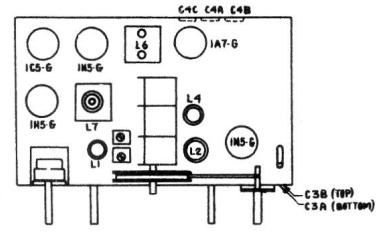
IC56T/G



I.F. 455 K.C.



1946-47



No.	Dummy Ant. used with Signal Gen.	Con. of Signal Gen. To Receiver	Signal Gen. Freq.	Receiver Dial Setting	Trimmer Description	Type of Adjustment
1.	.1 mfd. cond.	Top Grid of 1A7G	455 KC	Any point on BC Band where signal is not affected.	1st I.F. 2nd I.F.	Adjust for maximum output, then repeat the adjustment.
2.	Standard All Wave Dummy	Antenna	600 KC	600KC on BC Band.	Osc. Pad C4C	Adjust to bring in signal.
3.	"	"	17000 KC	17000 KC on SW Band.	Osc. shunt C4A	"
4.	"	"	"	"	R.F. shunt C3A Ant. shunt C2B	Adjust for maximum output while rocking gang.
5.	"	"	1500 KC	1500 KC on BC Band.	Osc. shunt C4B	Adjust to bring in signal.
6.	"	"	"	"	Ant. shunt C2A	Adjust for maximum output.
7.	"	"	600 KC	600 KC on BC Band.	Osc. Pad C4C	Adjust for maximum output while rocking gang.
8.	"	"	"	"	R.F. Coil L4	Adjust iron core for maximum output.
9.	"	"	1500 KC	1500 KC on BC Band.	R.F. shunt C3B Ant. shunt C2A	Adjust for maximum output.
10.	"	"	"	"		Repeat 8 & 9.

MODEL 521