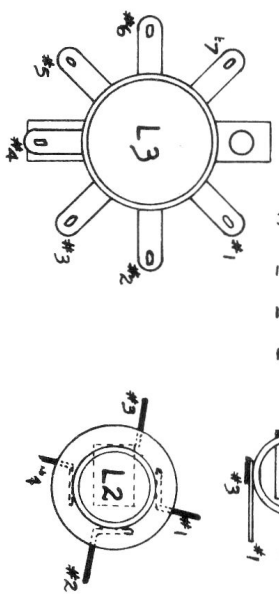


No.	Dummy Antenna	Connection of Signal Generator to Receiver	Signal Generator Frequency	Receiver Dial Setting	Trimmers to be adjusted	Description of Adjustment
1.	.1 mfd cond. in both leads of generator. Leave the cond. in ground side for all adjustments.	Stator connection of antenna section (front) of gang	455 kc	Anywhere that does not affect the signal	2nd I.F. 1st I.F.	Peak both transformers for maximum output, then repeat until no further increase in output is obtained.
2.	.1 mfd. cond.	Same as No. 1	600 kc	600 kc	C23 - BC Osc. Series Pad	Adjust to bring in signal
3.	Standard dummy	Antenna Wire or Terminal	1500 kc	1500 kc	C1A then C2A	Adjust to bring in signal Repeat 2 & 3.
4.					C2B	Adjust for maximum signal while rocking gang.
5.	400 ohm Carbon Resistor	Antenna Wire or Terminal	17000 kc	Bring in the signal at the higher of the two dial settings.		

1940-41



MODEL
484