

# 1940-41 MODEL 482

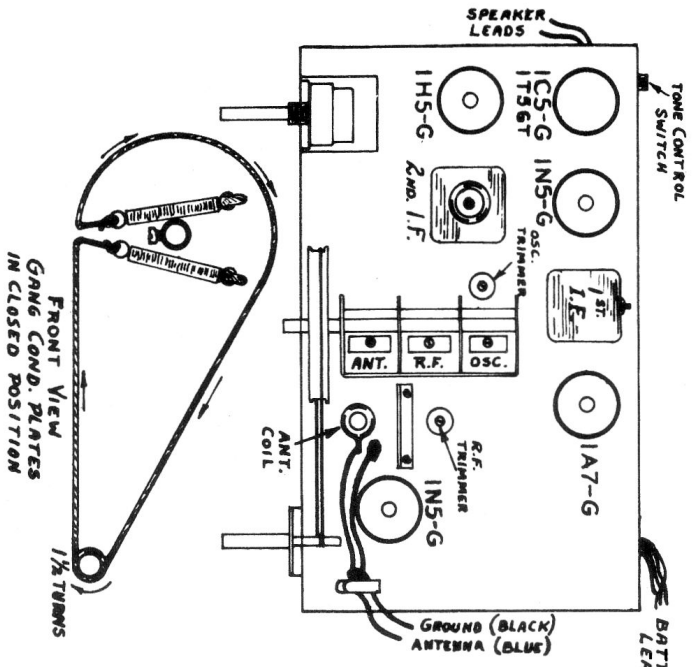
MANTREL MODEL № 4821  
CONSOLE MODEL № 4825



A well shielded, accurately calibrated signal generator and an output meter are required to align this chassis. Connect the output meter to the voice coil terminals of the speaker and proceed as follows: Set the pointer horizontal at the low frequency end of the dial with the gang condenser in full mesh.

Dummy Antenna In Series with Signal Gen.	Connection of Signal Gen. to Receiver	Signal Gen. Freq.	Receiver Dial Setting	Trimmer Desc.	Type of Adjustment
1. .1 mfd. cond.	Top grid of 1A7G	455 kc	Any point where it does not affect the signal	Oscillator 1st I.F. 2nd I.F.	Adjust for maximum output then repeat adjustment
2. Standard dummy	Antenna lead	600 kc	600 kc	Oscillator coil L3	Adjust iron core to bring in signal
3. Standard dummy	Antenna lead	600 kc	600 kc	RF coil L2	Adjust iron core for maximum output
4. Standard dummy	Antenna lead	1500 kc	1500 kc	On rear section of gang	Adjust oscillator to bring in signal
5. Standard dummy	Antenna lead	1500 kc	1500 kc	Centre and front gang sections	Adjust RF and antenna for maximum output while rocking gang slightly
6. Standard dummy	Antenna lead	600 kc	600 kc	Repeat operations number 2 and 3	
7. Standard dummy	Antenna lead	1500 kc	1500 kc	Repeat operations number 4 and 5	

Note: A 200 mmf. condenser may be used for the Standard Dummy. The volume control should be full on for all adjustments and the weakest signal used that will give a readable output.



NOTE: ALL TUBE VOLTAGES MEASURED TO CHASSIS WITH 1000 OHM PER VOLT METER.