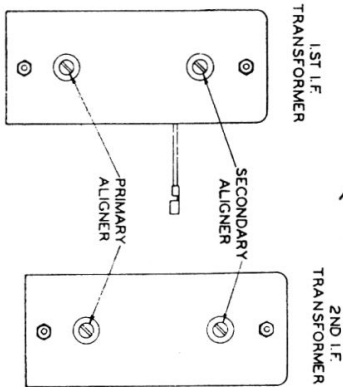


RCC - Stromberg-Carlson Data Sheet 23a (Bottom Half)

VOLTAGES for 130-132

TRIMMER LOCATIONS

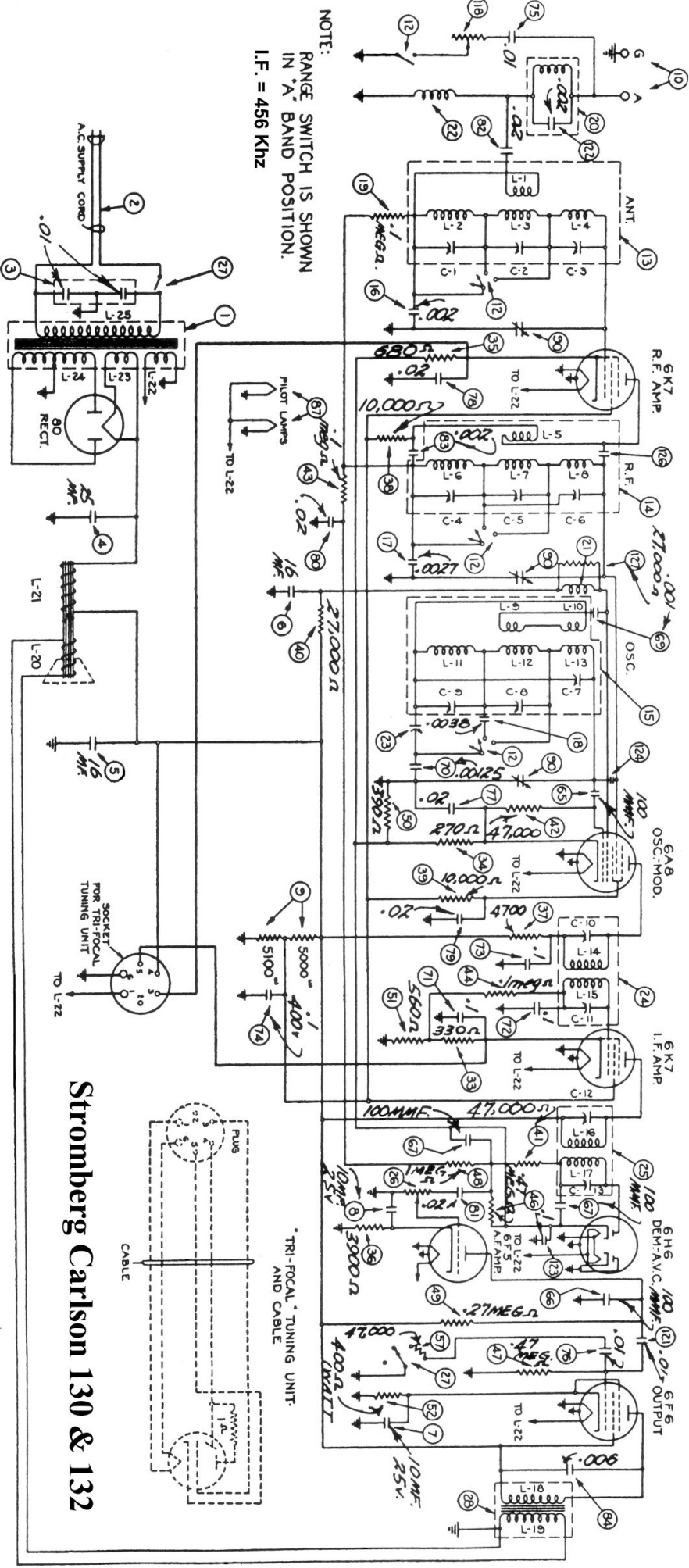


R.F. ALIGNMENT
Align in the following order:

- Oscillator's "C" Band Shunt Aligner at 17 Megacycles (Capacitor C-7).
- R. F. Interstage "C" Band Shunt Aligner at 17 Megacycles (Capacitor C-6).
- Antenna "C" Band Shunt Aligner at 17 Megacycles (Capacitor C-3).
- Oscillator's "B" Band Shunt Aligner at 3.4 Megacycles (Capacitor C-8).
- R. F. Interstage "B" Band Shunt Aligner at 3.4 Megacycles (Capacitor C-5).
- Antenna "B" Band Shunt Aligner at 3.4 Megacycles (Capacitor C-2).
- Oscillator's "A" Band Shunt Aligner at 1.4 Megacycles (Capacitor C-9).
- R. F. Interstage "A" Band Shunt Aligner at 1.4 Megacycles (Capacitor C-4).
- Antenna "A" Band Shunt Aligner at 1.4 Megacycles (Capacitor C-1).
- Oscillator's "A" Band Series Aligner at 0.6 Megacycles (Capacitor C-11).
- Oscillator's "A" Band Shunt Aligner at 1.4 Megacycles (Capacitor C-9).
- R. F. Interstage "A" Band Shunt Aligner at 1.4 Megacycles (Capacitor C-4).
- Antenna "A" Band Shunt Aligner at 1.4 Megacycles (Capacitor C-1).

I.F. ALIGNMENT
Align in the following order:

- Secondary of 2nd I. F. Transformer (Capacitor C-13).
- Primary of 2nd I. F. Transformer (Capacitor C-12).
- Secondary of 1st I. F. Transformer (Capacitor C-11).
- Primary of 1st I. F. Transformer (Capacitor C-10).



NOTE:
RANGE SWITCH IS SHOWN
IN "A" BAND POSITION.
I.F. = 456 KHz

Stromberg Carlson 130 & 132