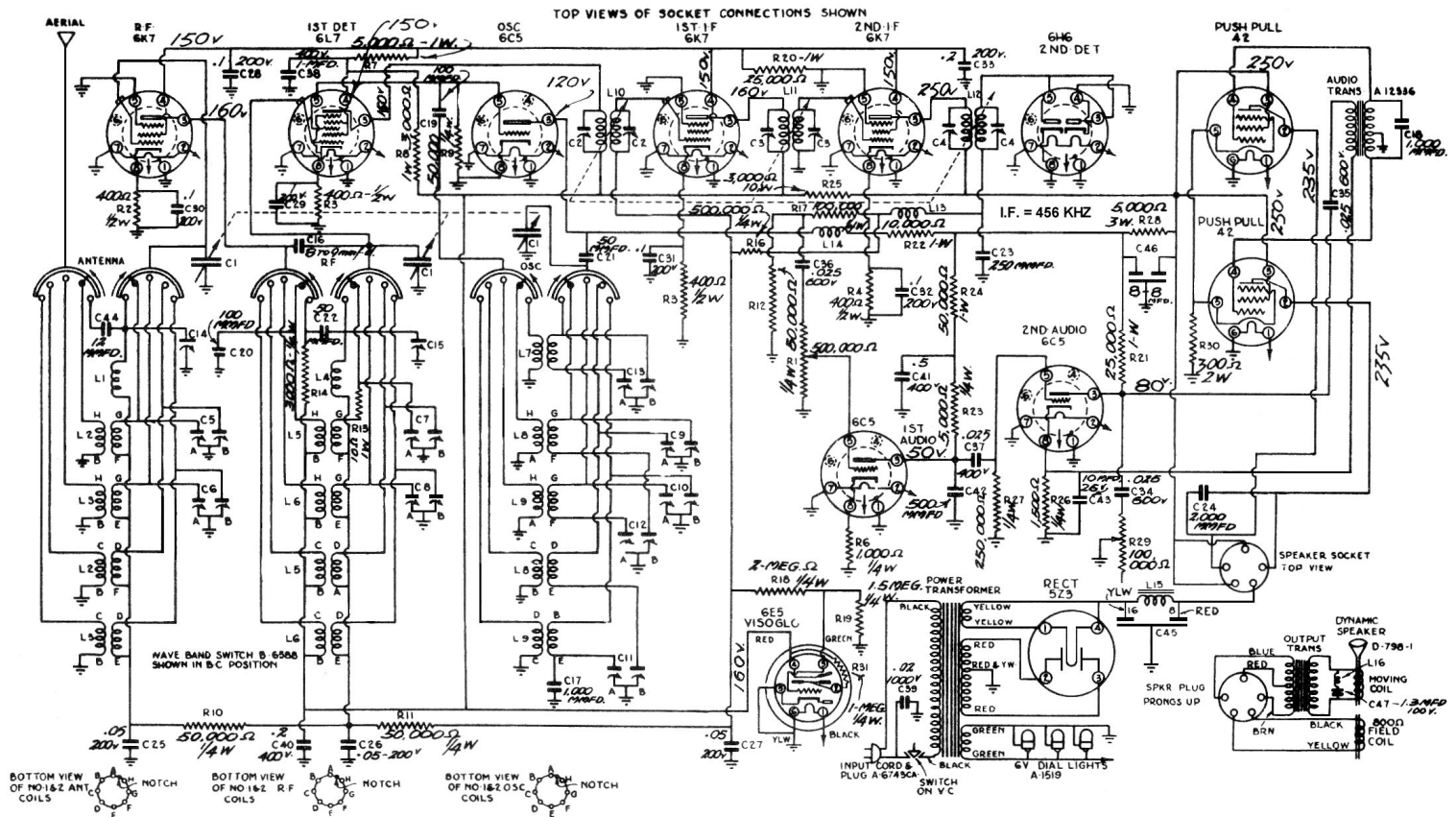


Sparton Model 811 Receiver



NOTE—Before commencing alignment make sure that the dial is set so that with the selector plates in flush, the pointer points to the last division on the dial.

1. INTERMEDIATE FREQUENCY AMPLIFIER.

Set service oscillator at 456 K.C. and with test lead attached to 6L7 (converter tube) grid cap adjust trimmers C2, C3, C4 for maximum reading on the output meter.

CAUTION—Be sure that the selectivity control is set at the position for maximum selectivity (turned to the right).

2. BROADCAST BAND ALIGNMENT.

(a) **OSCILLATOR TRIMMER**—Set service oscillator at 1500 K.C. and connect test lead to yellow antenna lead, adjust trimmer C 9 B until with signal tuned in dial points to 150 on black scale.

(b) **OSCILLATOR PADDER**—Set service oscillator at 600 K.C. and adjust padder C 12 B so that with signal tuned in, dial points to 60 on black scale. (Recheck at 1500 as in section "a" above).

(c) **R. F. TRIMMERS**—With service oscillator set at 1500 K.C. and set tuned to that frequency, adjust trimmers C 7 A and C 5 A for maximum output.

3. NUMBER 2 BAND ALIGNMENT.

(a) **OSCILLATOR TRIMMER**—Set service oscillator at 3000 K.C. and with band switch turned to the green position, adjust trimmer C 10 A until with signal tuned in dial points to 3.0 on the green scale.

(b) **OSCILLATOR PADDER**—Set service oscillator at 1500 K.C. and adjust padder C 12 A so that with signal tuned in dial points to 1.5 on the green scale. (Recheck at 3000 as above).

(c) **R. F. TRIMMERS**—With the service oscillator at 3000 K.C. and set tuned to that frequency, adjust trimmers C 6 A and C 8 A for maximum reading on the output meter.

4. NUMBER 3 BAND ALIGNMENT.

(a) **OSCILLATOR TRIMMER**—Set service oscillator at 7500 K.C. and with band switch turned to the red position, adjust trimmer C 9 A until with signal tuned in, dial points to 75 on the red scale.

(b) **OSCILLATOR PADDER**—Set service oscillator at 3750 K.C. and adjust padder C 11 B so that with signal tuned in dial points to 3.75 on the red scale (Recheck at 7500 as above).

(e) **R. F. TRIMMERS**—With the service oscillator at 7500 K.C. and the set tuned to that frequency, adjust trimmers C 5 B and C 7 B for maximum reading on output meter.

5. NUMBER 4 BAND ALIGNMENT.

(a) **OSCILLATOR TRIMMER**—Set service oscillator at 15000 K.C. and with band switch turned to the blue position, adjust trimmer C 10 B until with signal tuned in dial points to 15 on the blue scale.

(b) **OSCILLATOR PADDER**—Set service oscillator at 9000 K.C. and adjust padder C 11 A so that with signal tuned in, dial points to 9. (Recheck at 15000 as above).

(c) **R. F. TRIMMERS**—With the service oscillator at 15000 and set tuned to that frequency, adjust trimmers C 6 B and C 8 B for maximum reading on output meter.

6. LONG WAVE "X" BAND ALIGNMENT.

(a) **OSCILLATOR TRIMMER**—Set service oscillator at 350 K.C. and with band switch turned to the brown position adjust trimmer C 13 B until with signal tuned in, dial points to 350 on the brown scale.

(b) **OSCILLATOR PADDER**—Set service oscillator at 150 and adjust padder C 13 A so that with signal tuned in, dial points to 150. (Recheck at 350 as above).

(c) **R. F. TRIMMERS**—With service oscillator at 350 K.C. and set tuned to that frequency, adjust trimmers C 14 and C15 for maximum reading on output meter.

RIGHT Chassis Layout

