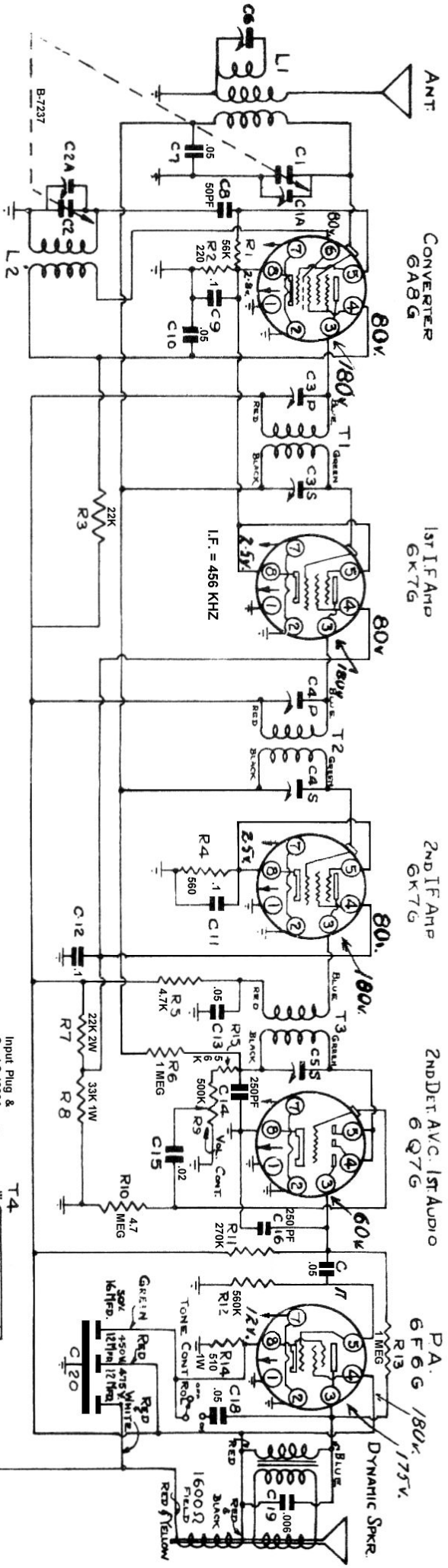
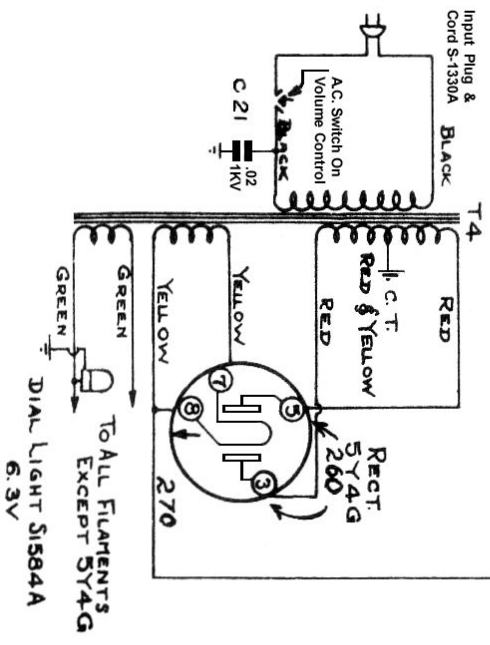
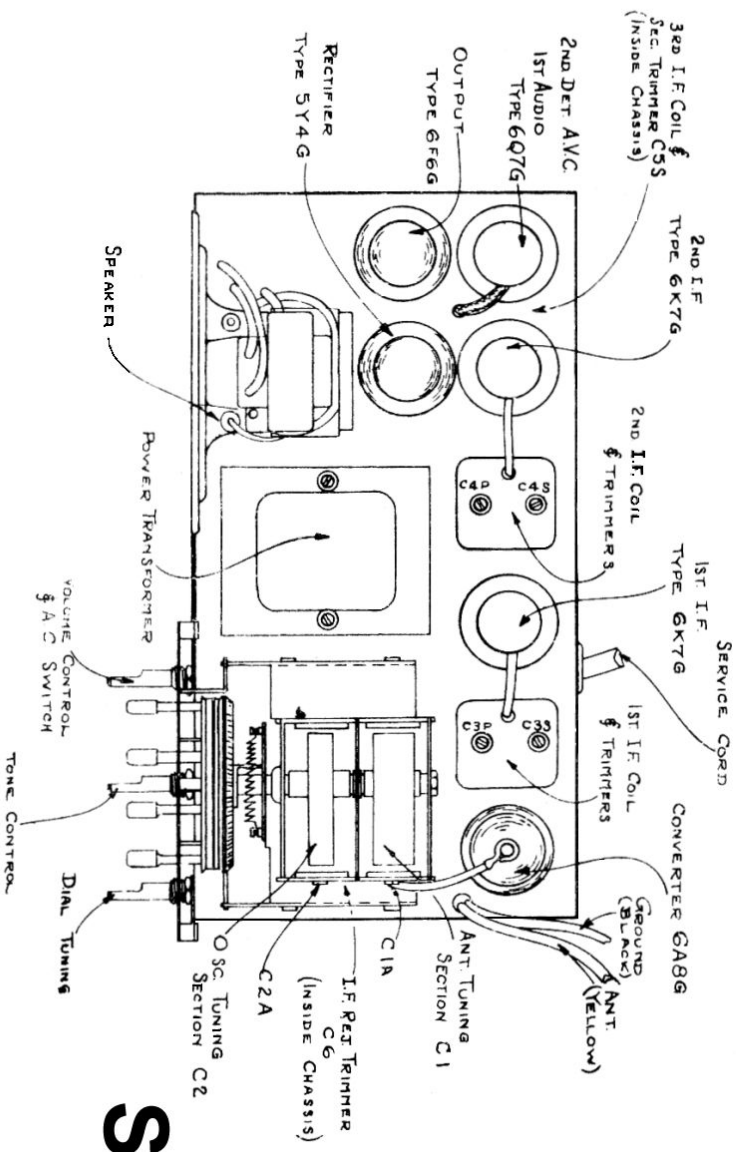


TOP VIEW OF ALL SOCKET CONNECTIONS



Top View Of Model 6140



Sparton Model 6140

A.C. Receiver

Sparton Model 6140 Alignment Data

I. F. ALIGNMENT—

With the service oscillator set at 456 K.C. and the oscillator lead connected to the 6A8G grid cap, adjust trimmers C3P, C3S, C4P, C4S and C5S for maximum output. The selector should be turned out or opened while making these adjustments.

I. F. REFLECTOR—

With the service oscillator set at 456 K.C. and its output lead attached to the antenna of the chassis, adjust trimmer C6 for **minimum** output. Caution—Make sure the chassis is not tuned to a harmonic of 456.

R. F. ALIGNMENT

1. OSCILLATOR TRIMMER

With the service oscillator tuned to 1500 K.C., adjust trimmer C2A until signal is tuned in, when dial is set at 1500.

2. R. F. TRIMMER

With service oscillator set at 1500 K.C., adjust C1A for maximum output.