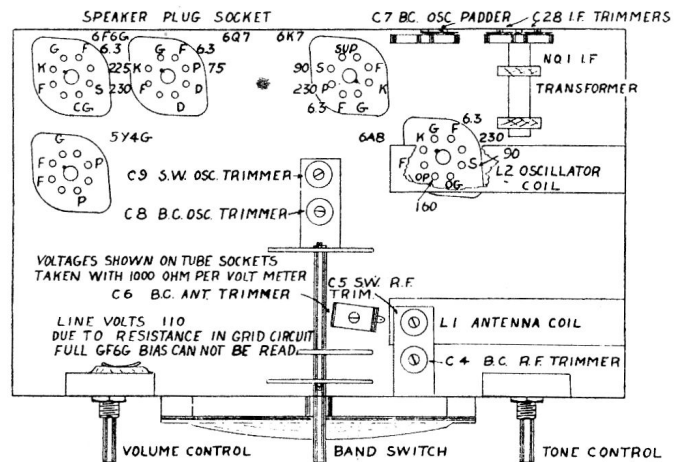
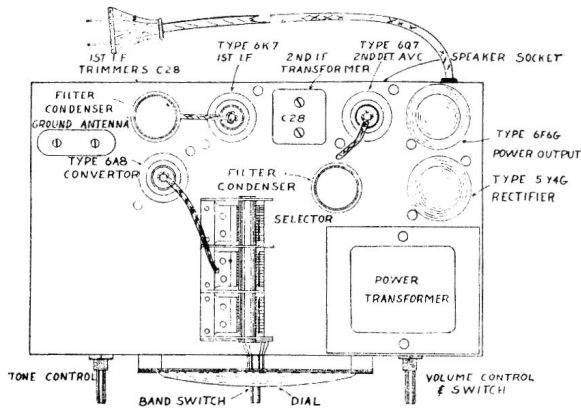
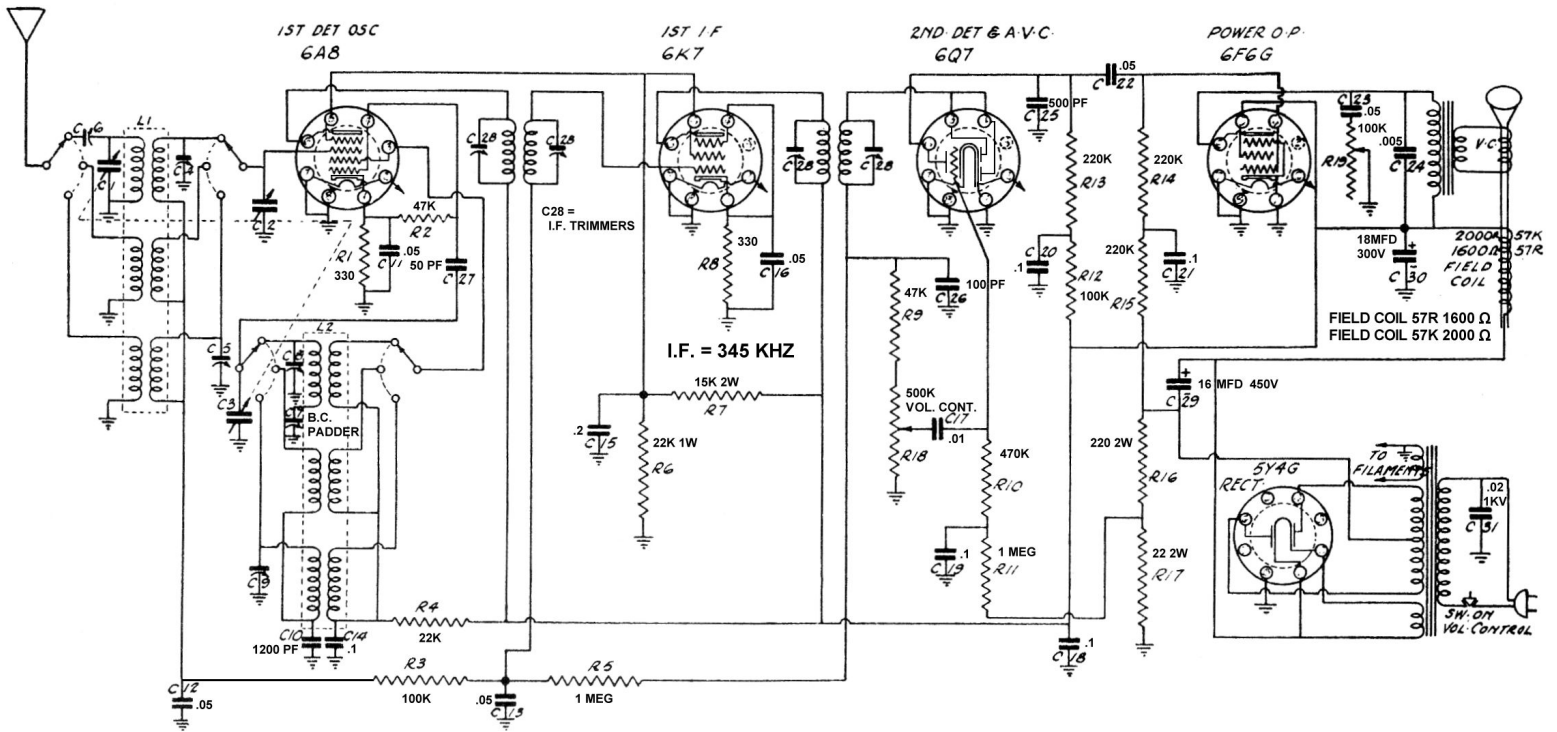


Sparton Model 57 A.C. Receiver

Bottom View of Sockets Shown



I. F. ALIGNMENT—

With the service oscillator set at 315 K.C. and the oscillator lead connected to the 1C6 grid cap, adjust trimmers C28 for maximum output.

B. C. Band Oscillator Trimmer

1. R. F. ALIGNMENT—

With the band switch in the B. C. position and the service oscillator tuned to 1500 K.C., adjust trimmer C8 until with set dial turned to 1500 signal is tuned in.

2. B. C. OSCILLATOR PADDER—

With service oscillator tuned to 600 K.C., adjust padder C7 until with set tuned to 600 signal is tuned in. Re-check at 1500 K.C. as above section one.

3. B. C., R. F. TRIMMERS—

With service oscillator set at 1500 K.C., adjust C6 and C4 for maximum output.

4. S. W., R. F. (turn Band switch to red position).

Red band oscillator trimmer.

With service oscillator set at 15,000 K.C. and set tuned to 15 Meg., adjust trimmer C9 until signal is tuned in.

5. S. W., R. F. TRIMMERS—

With service oscillator still set at 15,000 K.C., adjust trimmer C5 for maximum output.

There is no adjustment on the intermediate S. W. Band.