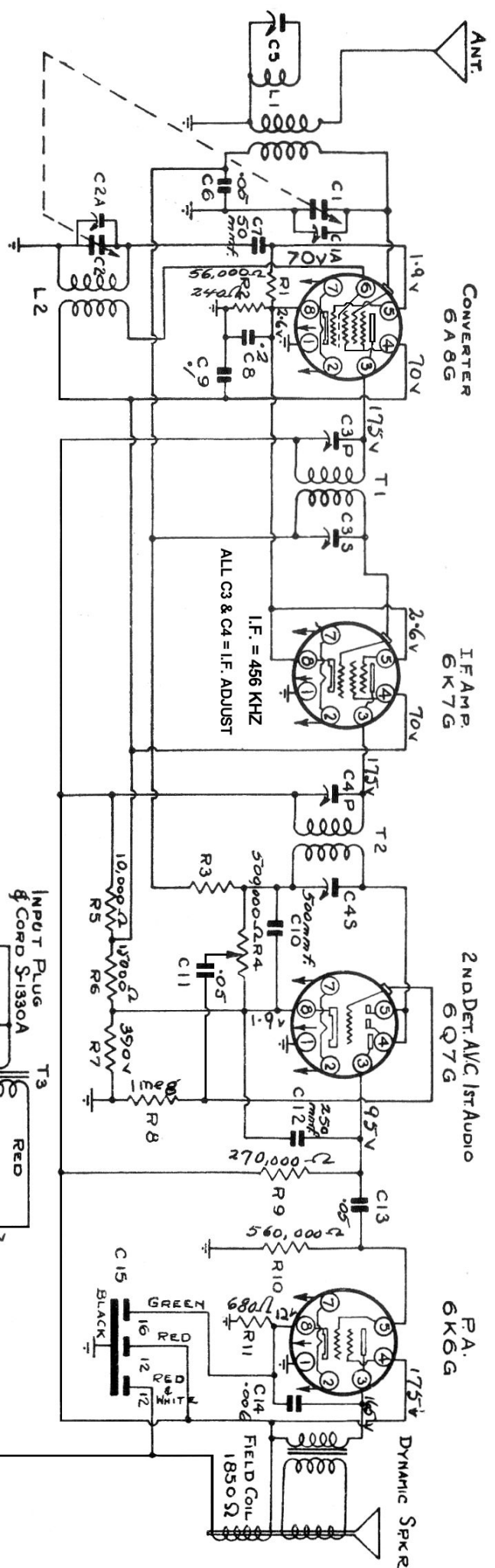
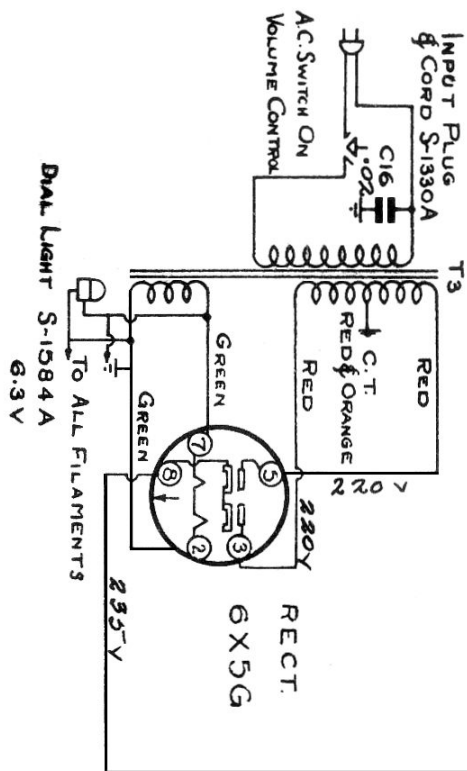
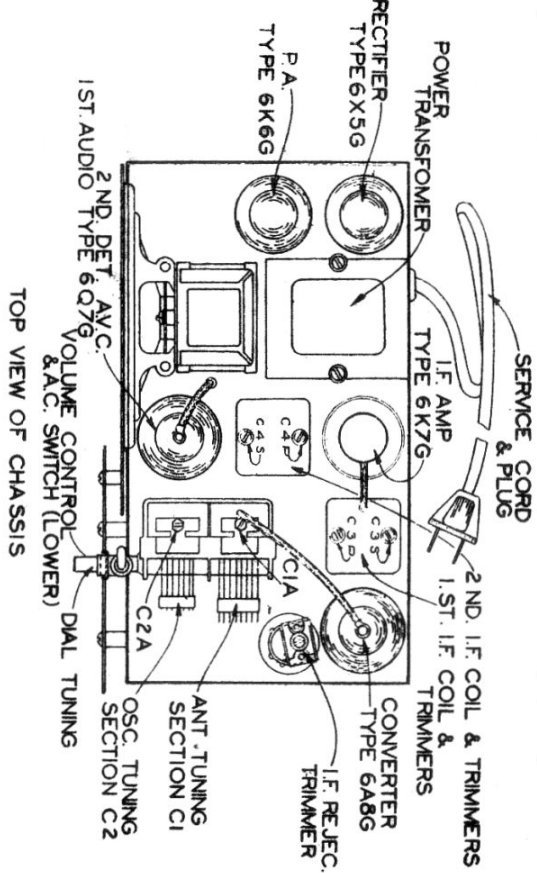


# Sparton 509 A.C. Receiver



# Sparton 509 Alignment Data

## **I. F. ALIGNMENT—**

With the service oscillator set at 456 K.C. and the oscillator lead connected to the 6A8G grid cap, adjust trimmers C3p, C3s, C4p, C4s for maximum output. The selector should be turned out or opened while making these adjustments.

## **I. F. REJECTOR—**

With the service oscillator set at 456 K.C. and its output lead attached to the aerial of the chassis, adjust trimmer C5 for minimum output. Caution—Make sure the chassis is not tuned to a harmonic of 456.

## **R. F. ALIGNMENT—**

### **1. OSCILLATOR TRIMMER**

With the service oscillator tuned to 1500 K.C., adjust trimmer C2A until signal is tuned in, when dial is set at 1500.

### **2. ANTENNAE TRIMMER**

With service oscillator set at 1500 K.C., adjust C1A for maximum output.