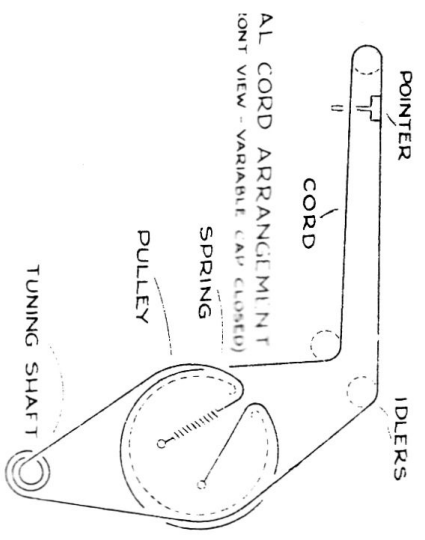
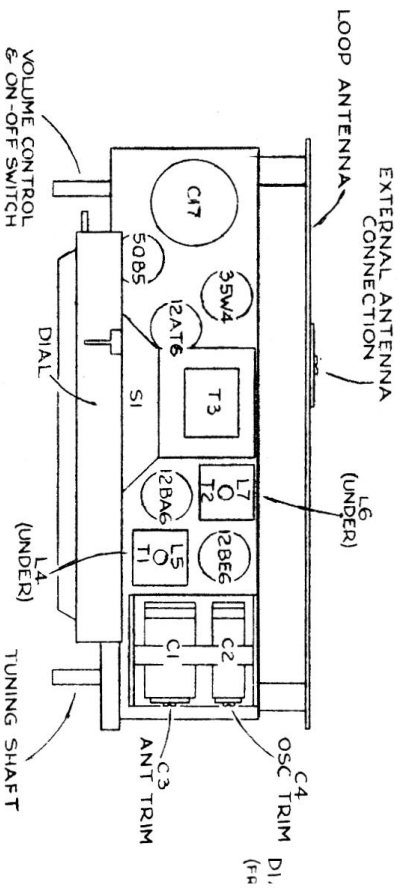


**SPARTON MODELS;
5051, 50150, 50250, 50450**



MODELS 50450

- C1,C2 VARIABLE CAPACITOR 16BR20
- C3 OMITTED
- C4 100 MMFD. CERAMIC CAP 18AR4-18
- C5 47 MMFD. CERAMIC CAP 18AR4-13
- C6 220 MMFD. CERAMIC CAP 18AR4-23
- C7 470 MMFD. CERAMIC CAP 18AR4-30
- R6 500,000 Ω VOL CONE SW 27AR1
- R12 OMITTED
- S1 4" P.M. SPEAKER 39BR13
- L1 OMITTED
- L2 LOOP ANTENNA ZCR13-3
- L3 OSCILLATOR COIL Z5AR11-1

MODELS 50150, 50250

- C1,C2 Variable Capacitor 16BR20 | C12,19 220 mmfd. Ceramic Cap. 18AR4-23 | T2 2nd. I.F. Transf. 2
- C5 Omitted | C15 470 mmfd. Ceramic Cap. 18AR4-30 | L1 Omitted
- C7 100 mmfd. Ceramic Cap. 18AR4-18 | DL Omitted 50150 only | L2 Loop Antenna 7
- C8 47 mmfd. Ceramic Cap. 18AR4-13 | T1 1st. I.F. Transf. 22AR25 | L3 Oscillator Coil

- C1,C2 VARIABLE CAPACITOR 16BR20
- C3 ANTENNA TRIMMER ON 16BR5
- C4 OSCILLATOR TRIMMER ON 16BR5
- C5 OSCILLATOR PADDER 16AR12
- C6 .003 MFD. 600V. CAPACITOR 15AR23
- C7 100 MMFD. MICA 18AR1-2
- C8 50 MMFD. MICA 18AR1-1
- C9 .05 MFD. 400V. 15AR17
- C10 .01 MFD. 400V. 15AR17
- C11 1 250 MMFD. 400V. 15AR18
- C12 .01 MFD. 400V. 15AR13
- C13 .01 MFD. 400V. 15AR15
- C14 .01 MFD. 400V. 15AR15
- C15 500 MMFD. MICA 15AR1-11
- C16 .01 MFD. 400V. 15AR15
- C17 40-40 MFD. 150V. ELECT CAP. 17AR2
- C18 .025 MFD. 600V. CAPACITOR 15AR41
- C19 250 MMFD. MICA 18AR1-3
- DL 117V. DIAL LIGHT BULB 20AR6
- S1 4" P.M. SPEAKER 39BR7
- T1 1ST. I.F. TRANSFORMER 22AR12
- T2 2ND. I.F. TRANSFORMER 22AR13
- T3 O.P. TRANSFORMER 21AR10
- R1 470,000 Ω .25W RESISTOR 10CR29
- R2 22,000 Ω .25W 10CR19
- R3 2.2 MEG Ω .25W 10CR35
- R4 100,000 Ω .25W 10CR35
- R5 1.0 MEG Ω .25W 10CR35
- R6 500,000 Ω VOL CONT & SW 27AR3
- R7 10.0 MEG Ω .25W RESISTOR 10CR37
- R8 270,000 Ω .25W 10CR29
- R9 470,000 Ω .25W 10CR29
- R10 150 Ω .5W 14AR2-7
- R11 1,800 Ω 1W 12CR6-5
- R12 39 Ω 1W 14AR3-1

ELECTRICAL ALIGNMENT

- Adjust signal generator to 455 Kcs. and connect to Antenna terminal, dial at 1500 Kcs.
- Adjust I.F. trimmer slugs (iron cores) through holes in top and bottom of #2 I.F. (T2) L7 and L6, then #1 I.F. (T1) L5 and L4. A fibre trimmer stick with a screw driver tip (insulated) is preferred.
- Signal generator at 1500 Kc, dial at 1500, adjust trimmer C4 to set oscillator on frequency, and trimmer C3 for maximum signal.
- Note: Base plate on chassis.

MODEL 5051

- C1,C2 VARIABLE CAPACITOR 16BR20
- C3 OMITTED
- C4 100 MMFD. CERAMIC CAP 18AR4-18
- C5 47 MMFD. CERAMIC CAP 18AR4-13
- C6 220 MMFD. CERAMIC CAP 18AR4-23
- C7 470 MMFD. CERAMIC CAP 18AR4-30
- R12 OMITTED
- S1 4" P.M. SPEAKER 39BR13
- L1 OMITTED
- L2 LOOP ANTENNA ZCR12-3
- L3 OSCILLATOR COIL Z5AR11-1