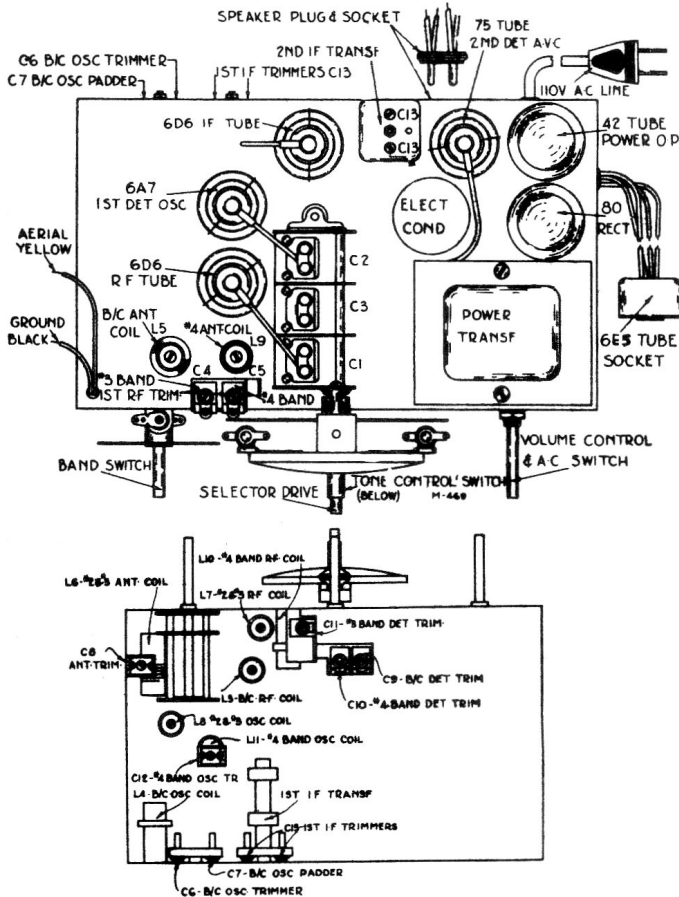
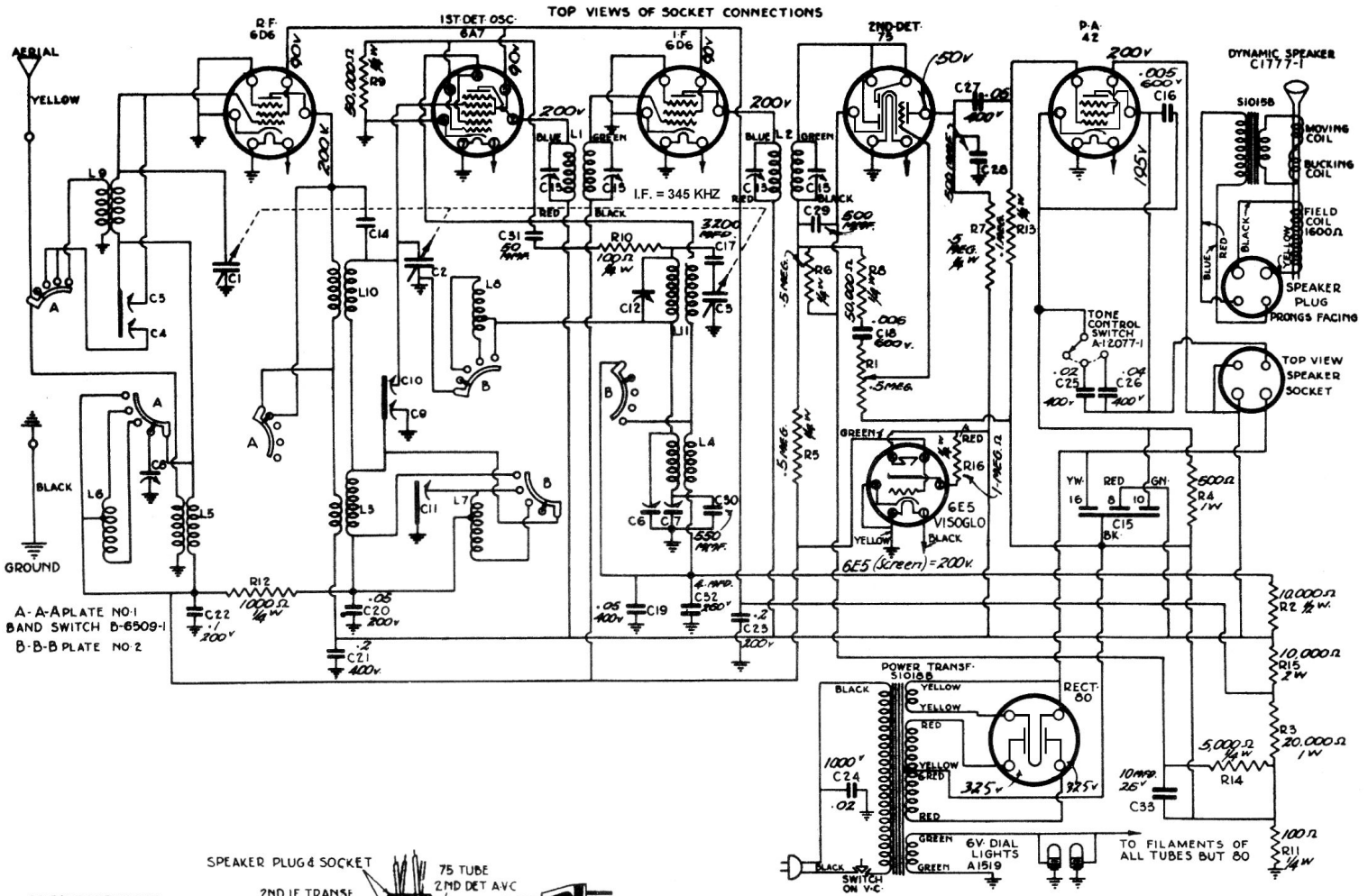


Spartan Model 469 A.C. Receiver



ALIGNMENT PROCEDURE

Before commencing alignment the dial should be set so that with the selector plates in flush, the pointer points to the last line on the black scale.

1. I.F. AMPLIFIER—Set service oscillator at 345 K.C. and with test lead attached to 6A7 grid cap, adjust the 4 trimmers C13 for maximum reading on the output meter.

NOTE the electron ray viso glo can be used as an output meter.

2. OSCILLATOR TRIMMER—Set service oscillator at 1500 K.C. and connect test lead to yellow antenna lead. Adjust trimmer C6 until signal is tuned in with dial tuned to 150 on broadcast band.

3. OSCILLATOR PADDER—Set service oscillator at 600 K.C. and adjust padder C7 until with signal tuned in dial points to 60. Re-check at 1500 as in section 2 above.

4. R.F. TRIMMER—With the 1500 K.C. signal tuned in and dial at 150, adjust trimmers C9 and C8 for maximum output.

SHORT WAVE ALIGNMENT

NO. 3 S.W. (PURPLE) BAND—Set service oscillator at 15,000 K.C. and adjust trimmer C12 until with signal tuned in the pointer is at 15 on the purple dial scale

R.F.—Adjust C5 and C10 for maximum output.

NO. 2 S.W. (RED) BAND—Set service oscillator at 6,000 K.C. and adjust trimmers C11 and C4 for maximum output.

NO. 1 S.W. (GREEN) BAND—No adjustments are required on this band.