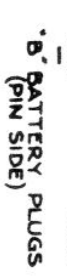
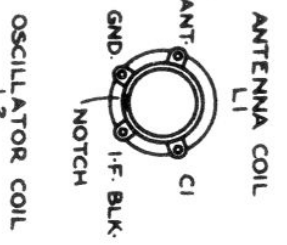
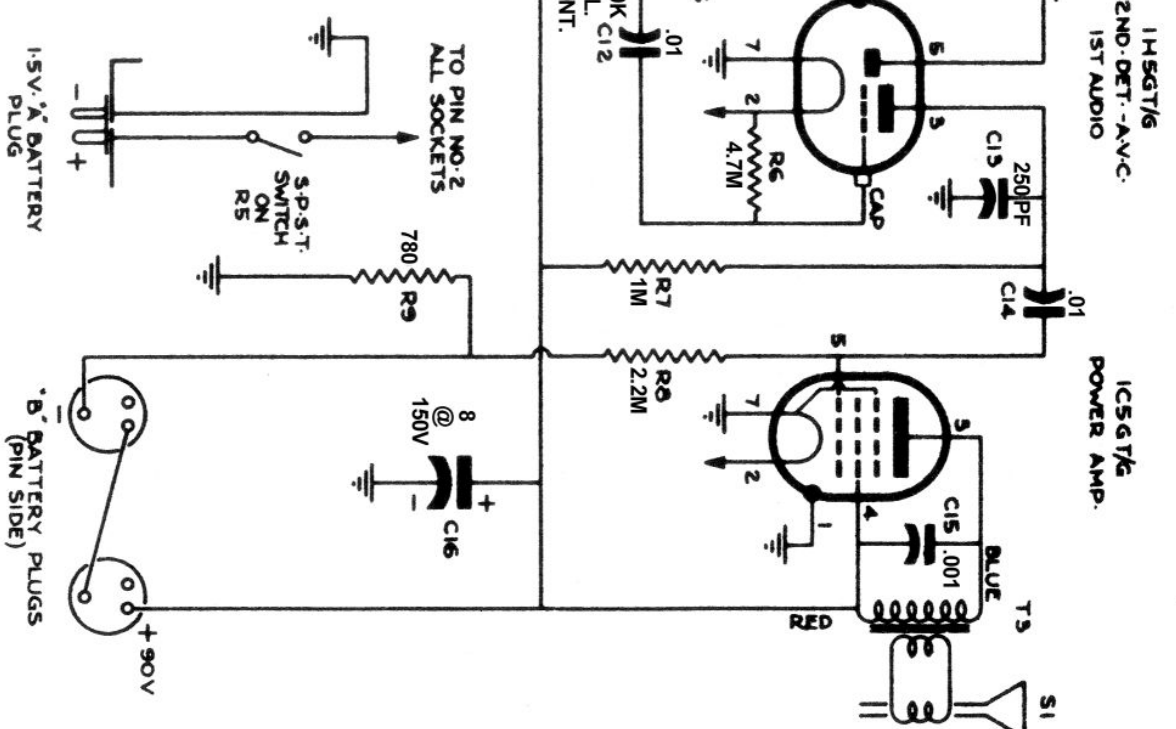
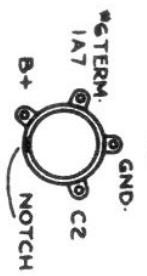
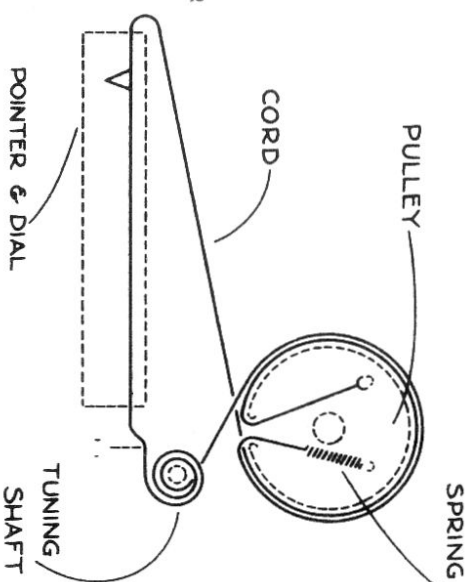
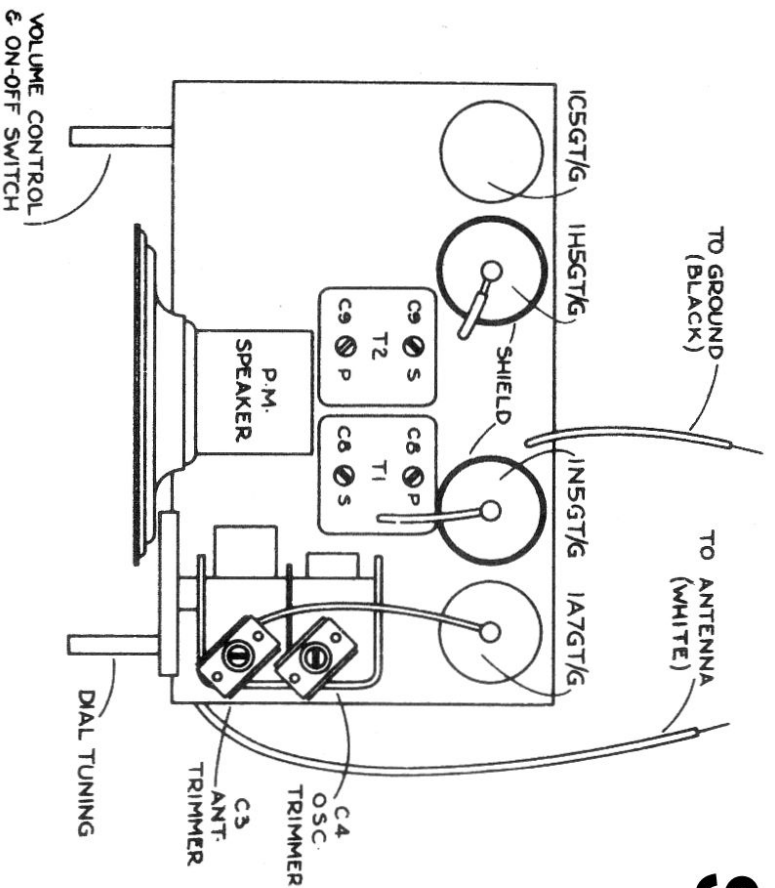


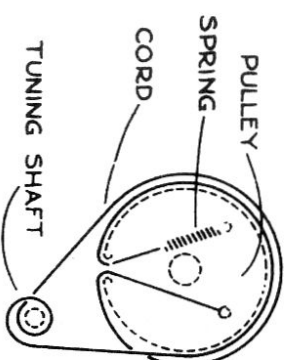
# Sparton 4648 & 4748 Battery Radio



# Sparton 4648 & 4748 Battery Receiver



4648 DIAL CORD ARRANGEMENT



4748 DIAL CORD ARRANGEMENT

**Alignment - Adjust Signal Generator to 455 Kcs and connect to Antenna Post and Chassis. Dial at 1500 Kcs.**

- Adjust I.F. Trimmer C9S and C9P on I.F. Transformer T2 for maximum output; then adjust Trimmer C8S and C8P on I.F. T<sub>1</sub> for maximum output, using setting giving least regeneration and best tone quality.
- Adjust Signal Generator to 1500 Kc., Dial to 1500 Kc and adjust Trimmer C<sub>4</sub> on V. Capacitor to bring Oscillator to 1500 Kcs.
- Adjust Trimmer C<sub>3</sub> to maximum signal with Signal Generator connected to Ant. Terminal at 1500 Kc.
- Note: Above adjustments must be made with Base Plate on bottom of chassis.