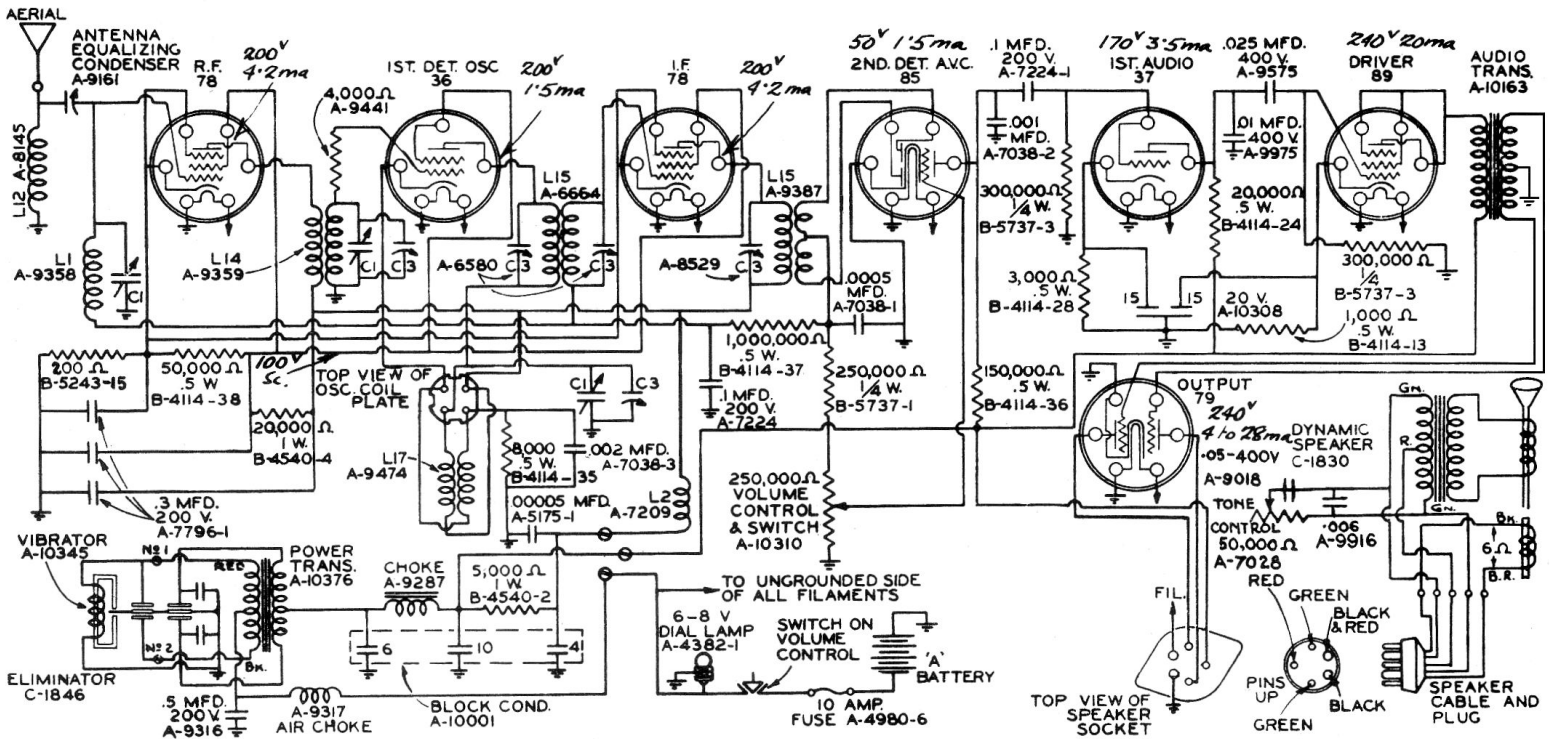


Model- 36 (Auto-Receiver) 1934 IF. 172.5 K c.



NOTE: WHEN POSITIVE (+) 'A' BATTERY IS GROUNDED, CONNECTIONS TO ELIMINATOR TERMINALS ONE (1) AND TWO (2) ARE AS SHOWN (MODEL 36 SHIPPED FROM FACTORY WITH THESE CONNECTIONS).
WHEN NEGATIVE (-) 'A' BATTERY IS GROUNDED, REMOVE ELIMINATOR COVER AND REVERSE CONNECTIONS TO TERMINALS ONE (1) AND TWO (2).

C1 VARIABLE CONDENSER
C2 EQUALIZING CONDENSER
C3 ADJUSTABLE CONDENSER
L1 TUNING COIL
L2 CATHODE CHOKE

L12 ANTENNA CHOKE COIL
L14 R.F. TRANSFORMER
L15 I.F. TRANSFORMER 172.5 K.C.
L17 OSCILLATOR COIL

Model 981 (Country House Receiver) 1932-33 IF 456 K c.

(covers 187 to 560 meters and 100 to 200 meters)

