

OUTPUT CONNECTIONS

The Amplifier's output transformer is tapped for matching a number of impedances between 4 and 500 Ω , and a standard RMA octal plug is provided for this purpose. Proper connections for various speaker impedances are as follows:

IMPEDANCE:

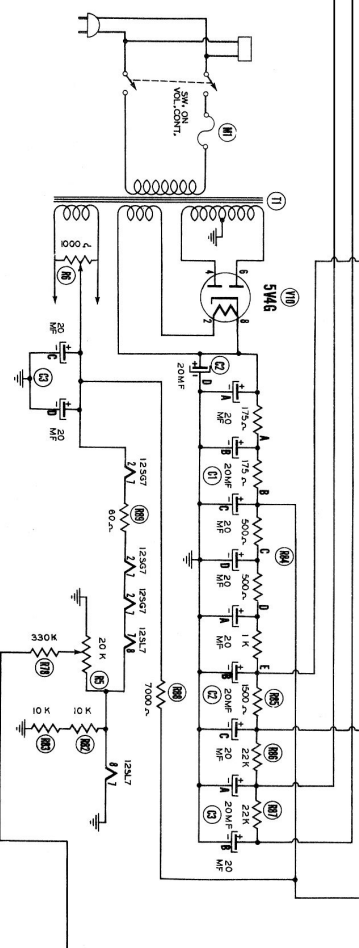
- | | |
|----------|--------------|
| 500 ohms | Pins 1 and 8 |
| 336 ohms | Pins 1 and 8 |
| 125 ohms | Pins 1 and 8 |
| 84 ohms | Pins 1 and 8 |
| 16 ohms | Pins 2 and 7 |
| 8 ohms | Pins 3 and 6 |
| 4 ohms | Pins 2 and 7 |
| 2 ohms | Pins 3 and 6 |

CONNECT SPEAKER TO:

CONNECT TOGETHER:

- Pins 4 - 5
Pins 2 - 7
Pins 1 - 5, 8 - 4
Pins 1 - 7, 8 - 2
Pins 4 - 5
Pins 4 - 5
Pins 2 - 5, 4 - 7
Pins 3 - 5, 4 - 6

When the rated speaker impedance does not correspond exactly to the values given in the table, use the connection giving the closest approximation, generally the next lower impedance.



SCOTT 211-A