

**ALIGNMENT OF RECEIVER**

**EQUIPMENT REQUIRED:** Signal generator: Capable of supplying modulated frequencies from 450 Kc. to 1700 Kc.

Output indicator: A power output meter or a high resistance A. C. voltmeter.

**ALIGNMENT PROCEDURE AND EQUIPMENT CONNECTIONS:**

**Signal Generator:** Allow a sufficient length of time after the generator has been turned on for it to become thermally stable before making any tests. Always be sure to use the specified capacitor in series with the output lead connections, as listed in the alignment procedure chart. Connect the return lead of the signal generator to the frame of the speaker near the 3V4 output tube.

**Output Indicator:** If a power output meter is used, adjust it for 4 ohms impedance, and connect it across the secondary of the output transformer, in place of the speaker voice coil. Do not exceed 40 milliwatts output during alignment. If an A. C. voltmeter is used, connect it across the voice coil (speaker connected), and do not exceed 0.1 volt during alignment. As the reading on the test meter increases with alignment, regulate the signal generator attenuator to keep the output within the limits specified above.

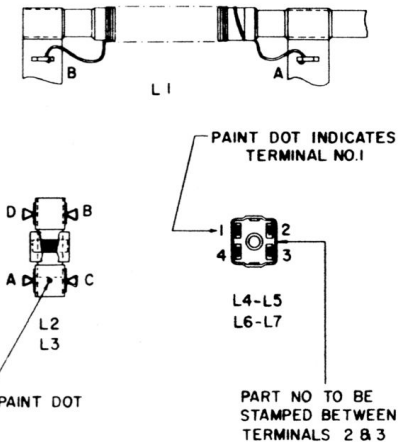
**Receiver:** Turn the volume control to the maximum (full clockwise) position.

ARROW → ON VOLUME CONTROL INDICATES CLOCKWISE ROTATION OF SHAFT.  
 ALL RESISTANCE VALUES ARE INDICATED IN OHMS  
 K=1000, MEG=1,000,000 OHMS  
 CAPACITOR VALUES: —|—|— SHOWN IN MICRO-MICRO FARADS. —|—|— SHOWN IN MICRO FARADS, EXCEPT WHERE NOTED.  
 ALL DC VOLTAGES MEASURED WITH A 20,000 OHMS PER VOLT FROM POINT TO CHASSIS, NO SIGNAL APPLIED.

**ALIGNMENT PROCEDURE**

| Operation Steps | SIGNAL GENERATOR   |           | RECEIVER         |           |   |
|-----------------|--|-----------|------------------|-----------|---|
|                 | Connections To Receiver  | Frequency | Tuning Condenser | See Notes | Adjust in Stated Order For Maximum Output |
| 1               | To hot lug of antenna coil through .05 mf. condenser   | 455 Kc.   | Min.             | A         | L 7, L 6, L 5, L 4.                       |
| 2               | To hot lug of antenna coil through .05 mf. condenser   | 1620 Kc.  | Min.             |           | Adjust C 4.                               |
| 3               | To hot lug of antenna coil through .05 mf. condenser   | 536 Kc.   | Max.             | B         | L 2                                       |
| 4               | Disconnect hot lead of signal generator and connect to fibre strip near terminal of green wire | 1500 Kc.  | 1500 Kc.         |           | C 2                                       |

Note A - Do not readjust L 7 or L 6.  
 Note B - After completing operation #3 repeat operation #2 then repeat operation #3.



# Rogers Majestic R861 Battery Operated Radio

# Philips P461 Battery Operated Radio

