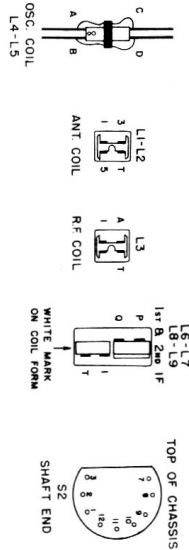
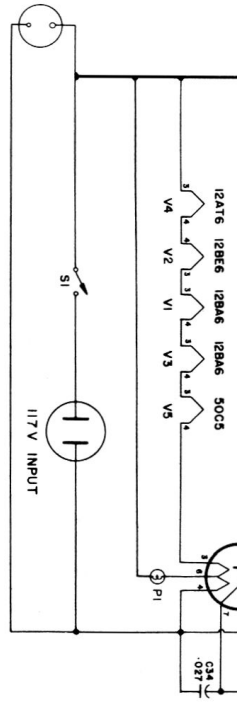
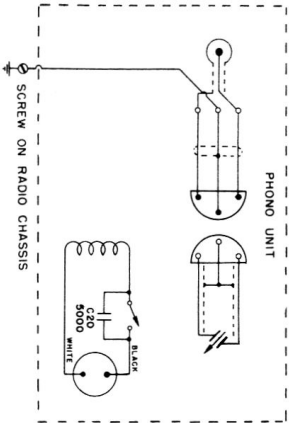


TUNING RANGE: 540 Kc. - 1700 Kc.
 INTERMEDIATE FREQUENCY: 455 Kc.
 LOUDSPEAKER IMPEDANCE: 4Ω
 AUDIO OUTPUT: 1 Watt undistorted



ALL DC VOLTAGES MEASURED TO B MINUS WITH A 20,000 OHMS PER VOLT METER, NO SIGNAL APPLIED, WITH S2 IN THE RADIO POSITION

ARROW → INDICATES CLOCKWISE ROTATION OF POTENTIOMETERS AND SWITCH S2
 CAPACITOR VALUES: —|—|— SHOWN IN MICRO FARADS UNLESS MARKED OTHERWISE
 RESISTOR VALUES SHOWN IN OHMS, K = 1,000 OHMS, MEG = 1,000,000 OHMS



Rogers Majestic R641

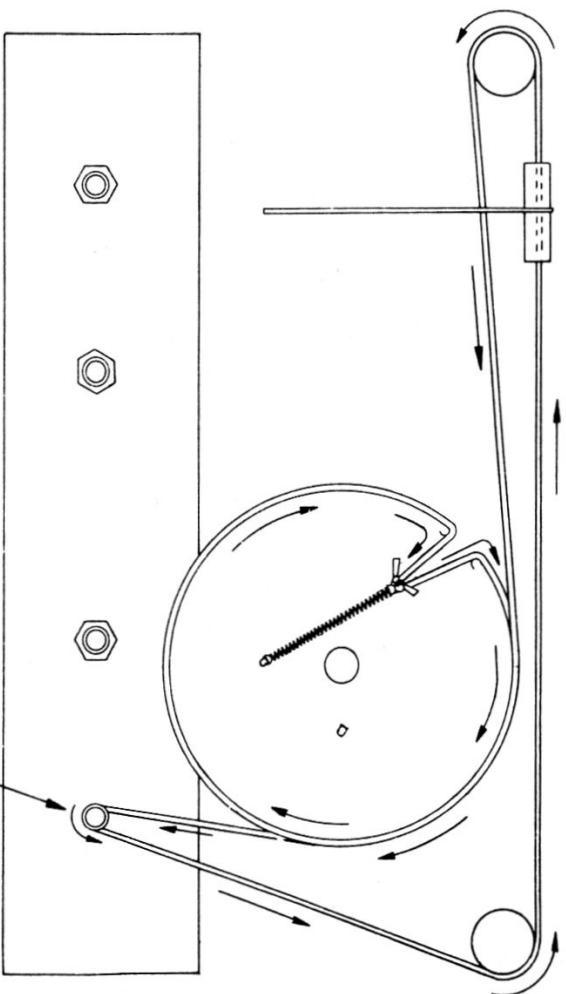
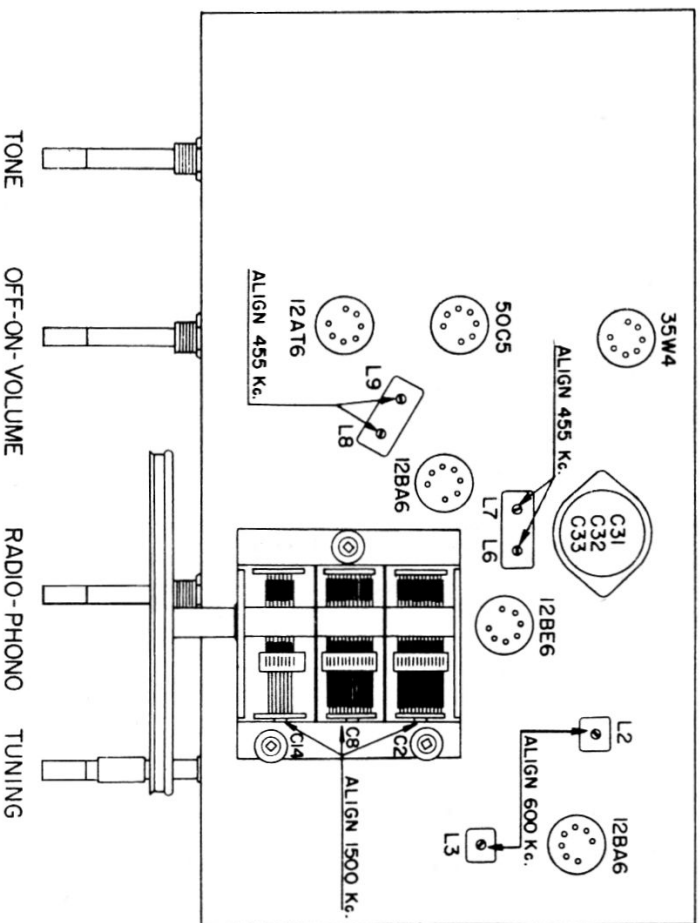
ALIGNMENT PROCEDURE

Operation Steps	SIGNAL GENERATOR		RECEIVER		
	Connections To Receiver	Frequency	Tuning Condenser	See Notes	Adjust In Stated Order For Maximum Output
1.	To pin 1 of 12BA6 (V3) through .05 mf condenser	455 kc	Min.		2nd I.F. Transformer L9, L8
2.	To stator of C8 through .05 mf condenser	455 kc	Min.	A.	1st I.F. Transformer L7, L6
3.	To antenna connection through 100 mmf condenser *	1500 kc	1500 kc		Oscillator Trimmer C14 R.F. Trimmer C8 Ant. Trimmer C2
4.	To antenna connection through 100 mmf condenser *	600 kc	600 kc	B.	R.F. Coil L3 Ant. Coil L2

* or a standard dummy antenna with a 200 mmf condenser in series.

Note A - After completing step 2 do not readjust L9, L8

Note B - After step 4 repeat steps 3 & 4 until no further improvement results.



3/4 TURNS AROUND TUNING SHAFT
 GANG CONDENSER AT MAXIMUM CAPACITY (CLOSED)
 DIAL DRUM IN POSITION SHOWN
 POINTER AT LOW FREQUENCY END OF DIAL
 COILS OF SPRING EXTENDED TO 1 3/4"
 LENGTH OF DIAL CORD APPROX 54"