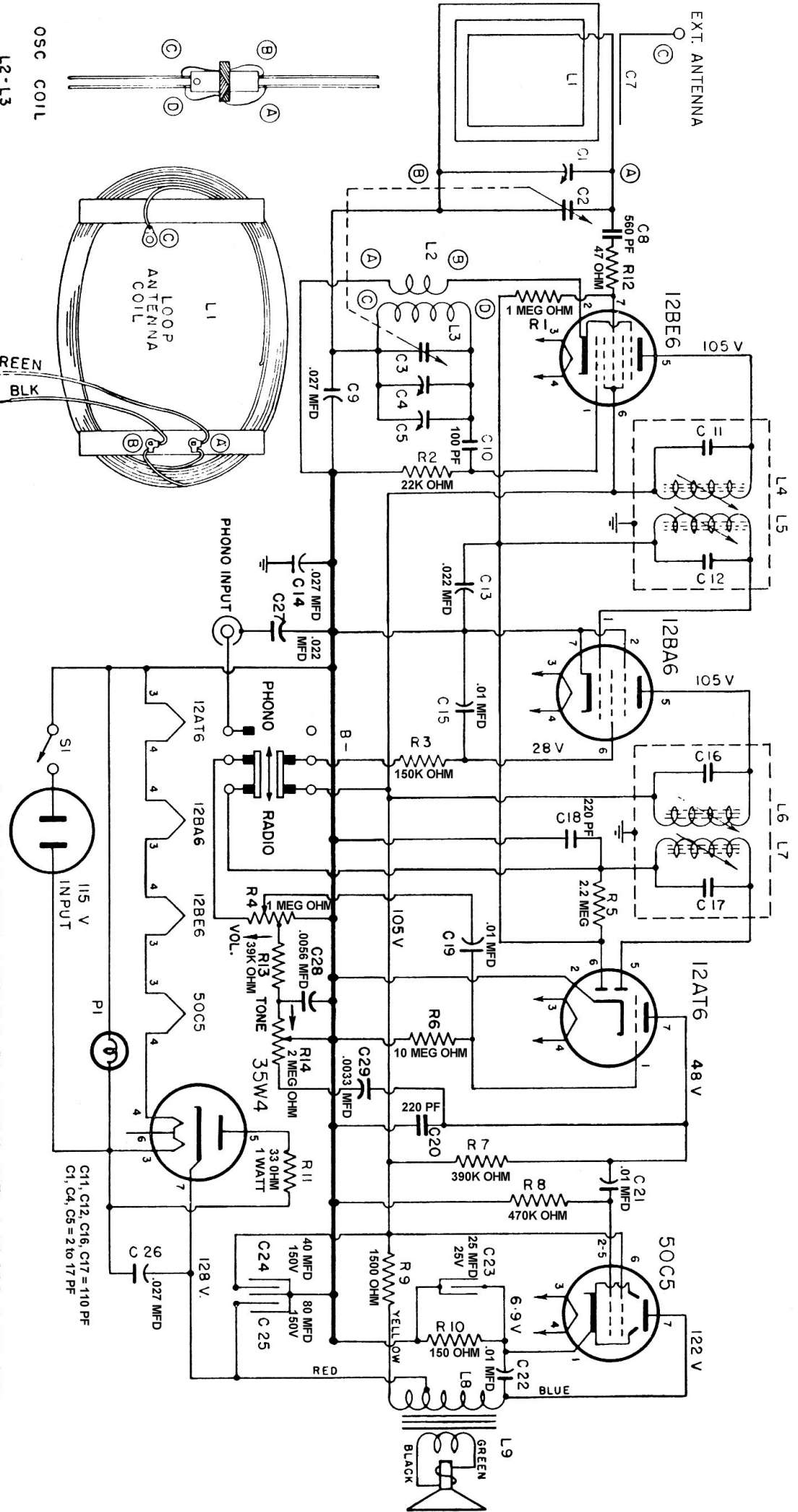


ROGERS MAJESTIC R181

ALL DC VOLTAGES MEASURED TO B MINUS WITH A 20,000 OHMS PER VOLT METER. WITH NO SIGNAL APPLIED.
 ARROW → INDICATES CLOCKWISE ROTATION OF SHAFT OF THE TONE AND VOLUME CONTROLS.



ALIGNMENT PROCEDURE AND EQUIPMENT CONNECTIONS

SIGNAL GENERATOR: Allow a sufficient length of time after the generator has been turned on for it to become thermally stable before making any tests. Always be sure to use the specified capacitor in series with the output lead connections as listed on the alignment procedure chart. Connect the return lead of the signal generator to the B- (negative end of the filter condenser C24-C25) of the receiver through a .05 mf. condenser.

LINE ISOLATING TRANSFORMER: Do not connect a grounded lead to the chassis base unless a line isolating transformer is used.

OUTPUT INDICATOR: If a power output meter is used adjust it for 4 ohms impedance and connect it in place of the speaker voice coil. Keep the output indicator below 500 milliwatts. If an A.C. voltmeter is used, connect it across the voice coil of the speaker. Never permit the output indication to exceed 1.3 volts during alignment. When the output indication increases, regulate the signal generator attenuator to keep the output below the above limits.

RECEIVER: Turn the volume control to the maximum (full clockwise) position, and the tone control to the treble (full counterclockwise) position. Set radio-phono switch (on rear of chassis) to radio position. With the gang tuning condenser fully closed, adjust the dial pointer to the left hand end of the dial calibration. The back cover must be fastened to the chassis for R.F. alignment.

Operation Steps	SIGNAL GENERATOR		RECEIVER		
	Connections to Receiver	Frequency	Tuning Capacitor	See Notes	Adjust in Stated Order for Maximum Output
1	To pin 1 of 12BA6 through .05 mf. capacitor	455 kc.	Min.		2nd I.F. Transformer L7-L6
2	To pin 7 of 12BE6 through .05 mf. capacitor	455 kc.	"	A	1st I.F. Transformer L5-L4
3	To antenna connection through 100 mmf. capacitor *	1500 kc.	1500 kc.	B	Oscillator Trimmers C4-C5
4	To antenna connection through 100 mmf. capacitor *	1500 kc.	1500 kc.		Antenna Trimmer C1

*—or a standard dummy antenna with a 200 mmf capacitor in series.
 NOTE A—After completing operation No. 2, do not readjust L7 - L6.
 NOTE B—C4 and C5 are in parallel, adjusting C5 should be sufficient.

