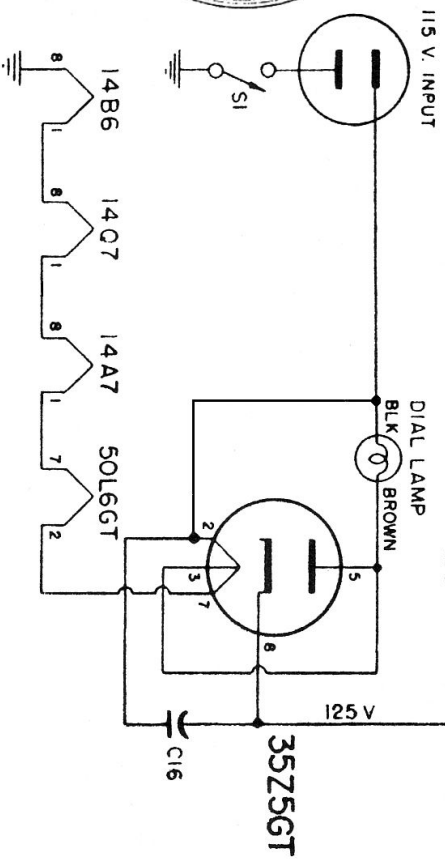
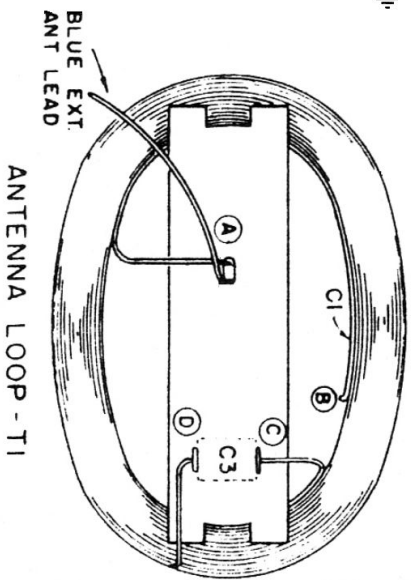
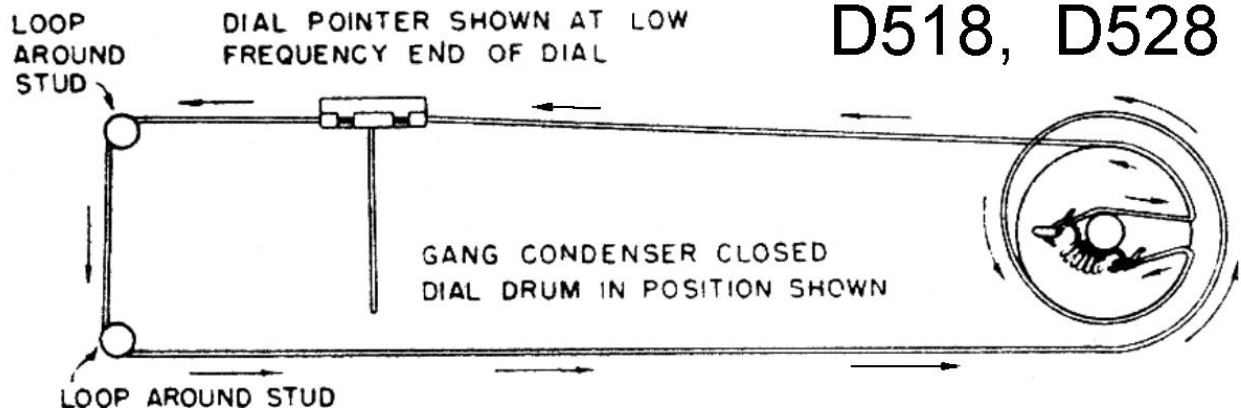


**ROGERS MAJESTIC R118, R128
DE FOREST D518, D528**



Symbol	Value	Description	Symbol	Value	Description
C1	8 mmf	Part of Loop T1	R1	1 Megohm ½ watt Comp. Insul.....	
C2, C15	.005 mf 600V. Paper Tubular			22,000 ohms ½ watt Comp. Insul.....	
C3	3-35 mf Trimmer		R3	2.2 Megohms ½ watt Comp. Insul.....	
C4 } C5 } C6 }	{ 11-431 mmf 10.7-172.7 mmf 2-22 mf Trimmer }	Gang Cond	R4	1 Megohm Volume Control with switch.	
C7	100 mmf 500V. Ceramicon G.P.		R5	4.7 Megohm ½ watt Comp. Insul.....	
C8, C16	.025 mf 600V. Paper Tubular		R6	390,000 ohms ½ watt Comp. Insul.....	
C9	47 mmf } Fixed Part of T3		R7	470,000 ohms ½ watt Comp. Insul.....	
C10	62 mmf }		R8	1800 ohms ±10% 1 watt Comp. Insul.....	
C11	.02 mf 200V.		R9	150 ohms ±10% ½ watt Comp. Insul...	
C12	66 mmf } Fixed Part of T4				
C13	83 mmf }				
C14, C17	300 mmf 500V. Ceramic G.P.				
C18	.001 mf 600V. Paper Tubular				
C19 } C20 } C21 }	{ 20 mf 25V. 40 mf 150V. 80 mf 150V. }	Triple Electrolytic			
C22	.02 mf 400V. Paper Tubular				

ROGERS MAJESTIC R118, R128 DE FOREST D518, D528



ALIGNMENT PROCEDURE

SIGNAL GENERATOR		RECEIVER			
Operation Steps	Connections to Receiver	Frequency	Tuning Capacitor	See Notes	Adjust in Stated Order for Maximum Output
1	To 14A7 Control grid (6) through .05 mf. capacitor	455 kc.	Min.		2nd I.F. Transformer T4 Sec. (Bottom)-Pri. (Top)
2	To Stator of C4 through .05 mf. capacitor	455 kc.	Min.	A	1st I.F. Transformer T3 Sec. (Bottom)-Pri. (Top)
3	To Antenna Lead through 1 megohm Resistor	1400 kc.	1400 kc.		Oscillator Trimmer C6
4	To Antenna Lead through 1 megohm Resistor	1400 kc.	1400 kc.	B	Antenna Trimmer C3 (Located on Loop Ass'y)

NOTE A: After completing operation No. 2, do not readjust T4.

NOTE B: Disconnect generator ground lead. Replace the chassis in the cabinet and adjust the Antenna Trimmer through the rear of the cabinet.