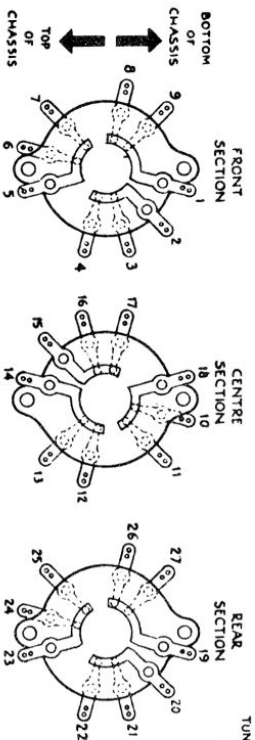
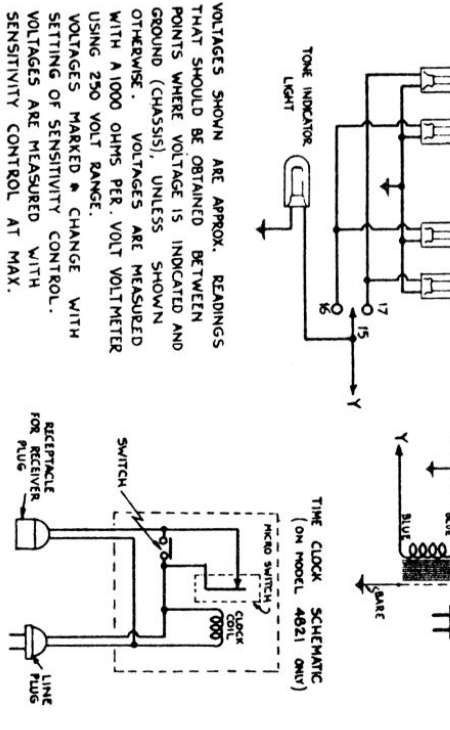


DIAGRAM OF BAND SWITCH CONNECTIONS
VIEW LOOKING FROM FRONT OF CHASSIS

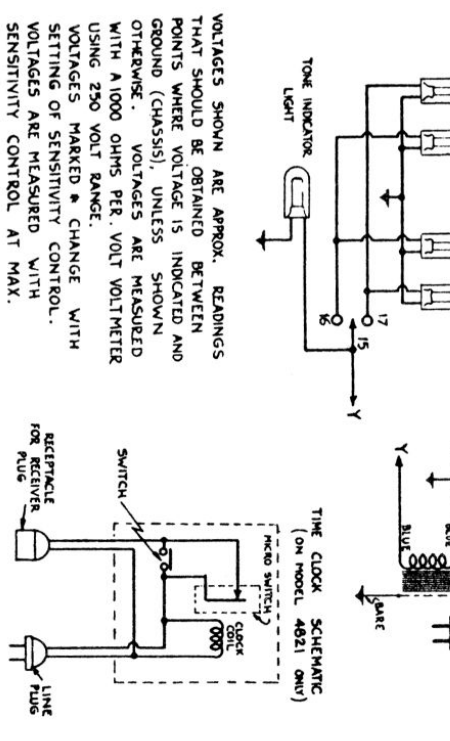


ITEM	MARKED CAPACITY	AGE ON 1st RELEASE LIMITS	REMARKS	PART NO.
C1	.05 MFD.	± 10%	TUBULAR	3810Z
C2	.05	± 10%	TUBULAR	3810Z
C3	.000095	± 10%	MICA	34114
C4	.001	± 20%	TUBULAR	34107
C5	.15	± 10%	CONDENSER	11923
C6	.15	± 10%	CONDENSER	11923
C7	.15	± 10%	CONDENSER	11923
C8	.15	± 10%	CONDENSER	11923
C9	.05	± 10%	TUBULAR	3810Z
C10	.0002	± 20%	MICA	34103
C11	.0001	± 20%	MICA	34104
C12	.03	± 20%	TUBULAR	38112
C13	.03	± 20%	TUBULAR	38112
C14	.002	± 20%	TUBULAR OIL IMP.	4877Z
C15	.0015	± 20%	TUBULAR OIL IMP.	4877Z
C16	.0015	± 20%	TUBULAR OIL IMP.	4877Z
C17	.0015	± 20%	TUBULAR OIL IMP.	4877Z
C18	.0015	± 20%	TUBULAR OIL IMP.	4877Z
C19	.0015	± 20%	TUBULAR OIL IMP.	4877Z
C20	.0015	± 20%	TUBULAR OIL IMP.	4877Z
C21	.0001	± 10%	CONDENSER	39003
C22	.0001	± 10%	CONDENSER	39003
C23	.0001	± 10%	CONDENSER	39003
C24	.0001	± 10%	CONDENSER	39003
C25	.0001	± 10%	CONDENSER	39003
C26	.0001	± 10%	CONDENSER	39003
C27	.0001	± 10%	CONDENSER	39003
C28	.0001	± 10%	CONDENSER	39003
C29	.0001	± 10%	CONDENSER	39003

ITEM	DESCRIPTION	LIMITS	REMARKS	PART NO.
T1	ANTENNA TRANS. ASSY.	± 15%	CARBON	37604
T2	INTERSTAGE R.F. COIL ASSY.	± 15%	CARBON	37604
T3	OSCILLATOR COIL ASSY.	± 15%	CARBON	37604
T4	1st I.F. TRANS. ASSY.	± 15%	CARBON	37604
T5	2nd I.F. TRANS. ASSY.	± 15%	CARBON	37604
T6	PUSH-PULL TRANS. ASSY.	± 15%	CARBON	37604
T7	POWER TRANS. ASSY.	± 15%	CARBON	37604
T8	POWER TRANS. ASSY.	± 15%	CARBON	37604
T9	REC. TRANS. ASSY.	± 15%	CARBON	37604
L1	POWER TRANS. ASSY.	± 15%	CARBON	37604
L2	REC. TRANS. ASSY.	± 15%	CARBON	37604
L3	REC. TRANS. ASSY.	± 15%	CARBON	37604
L4	REC. TRANS. ASSY.	± 15%	CARBON	37604
L5	REC. TRANS. ASSY.	± 15%	CARBON	37604
L6	REC. TRANS. ASSY.	± 15%	CARBON	37604
L7	REC. TRANS. ASSY.	± 15%	CARBON	37604
L8	REC. TRANS. ASSY.	± 15%	CARBON	37604
L9	REC. TRANS. ASSY.	± 15%	CARBON	37604
L10	REC. TRANS. ASSY.	± 15%	CARBON	37604
L11	REC. TRANS. ASSY.	± 15%	CARBON	37604
L12	REC. TRANS. ASSY.	± 15%	CARBON	37604
L13	REC. TRANS. ASSY.	± 15%	CARBON	37604
L14	REC. TRANS. ASSY.	± 15%	CARBON	37604
L15	REC. TRANS. ASSY.	± 15%	CARBON	37604
L16	REC. TRANS. ASSY.	± 15%	CARBON	37604
L17	REC. TRANS. ASSY.	± 15%	CARBON	37604
L18	REC. TRANS. ASSY.	± 15%	CARBON	37604
L19	REC. TRANS. ASSY.	± 15%	CARBON	37604
L20	REC. TRANS. ASSY.	± 15%	CARBON	37604
L21	REC. TRANS. ASSY.	± 15%	CARBON	37604
L22	REC. TRANS. ASSY.	± 15%	CARBON	37604
L23	REC. TRANS. ASSY.	± 15%	CARBON	37604
L24	REC. TRANS. ASSY.	± 15%	CARBON	37604
L25	REC. TRANS. ASSY.	± 15%	CARBON	37604
L26	REC. TRANS. ASSY.	± 15%	CARBON	37604
L27	REC. TRANS. ASSY.	± 15%	CARBON	37604
L28	REC. TRANS. ASSY.	± 15%	CARBON	37604
L29	REC. TRANS. ASSY.	± 15%	CARBON	37604
L30	REC. TRANS. ASSY.	± 15%	CARBON	37604
L31	REC. TRANS. ASSY.	± 15%	CARBON	37604
L32	REC. TRANS. ASSY.	± 15%	CARBON	37604
L33	REC. TRANS. ASSY.	± 15%	CARBON	37604
L34	REC. TRANS. ASSY.	± 15%	CARBON	37604
L35	REC. TRANS. ASSY.	± 15%	CARBON	37604
L36	REC. TRANS. ASSY.	± 15%	CARBON	37604
L37	REC. TRANS. ASSY.	± 15%	CARBON	37604
L38	REC. TRANS. ASSY.	± 15%	CARBON	37604
L39	REC. TRANS. ASSY.	± 15%	CARBON	37604
L40	REC. TRANS. ASSY.	± 15%	CARBON	37604
L41	REC. TRANS. ASSY.	± 15%	CARBON	37604
L42	REC. TRANS. ASSY.	± 15%	CARBON	37604
L43	REC. TRANS. ASSY.	± 15%	CARBON	37604
L44	REC. TRANS. ASSY.	± 15%	CARBON	37604
L45	REC. TRANS. ASSY.	± 15%	CARBON	37604
L46	REC. TRANS. ASSY.	± 15%	CARBON	37604
L47	REC. TRANS. ASSY.	± 15%	CARBON	37604
L48	REC. TRANS. ASSY.	± 15%	CARBON	37604
L49	REC. TRANS. ASSY.	± 15%	CARBON	37604
L50	REC. TRANS. ASSY.	± 15%	CARBON	37604



SCHEMATIC OF THE CLOCK (ON MODEL 4821 ONLY)

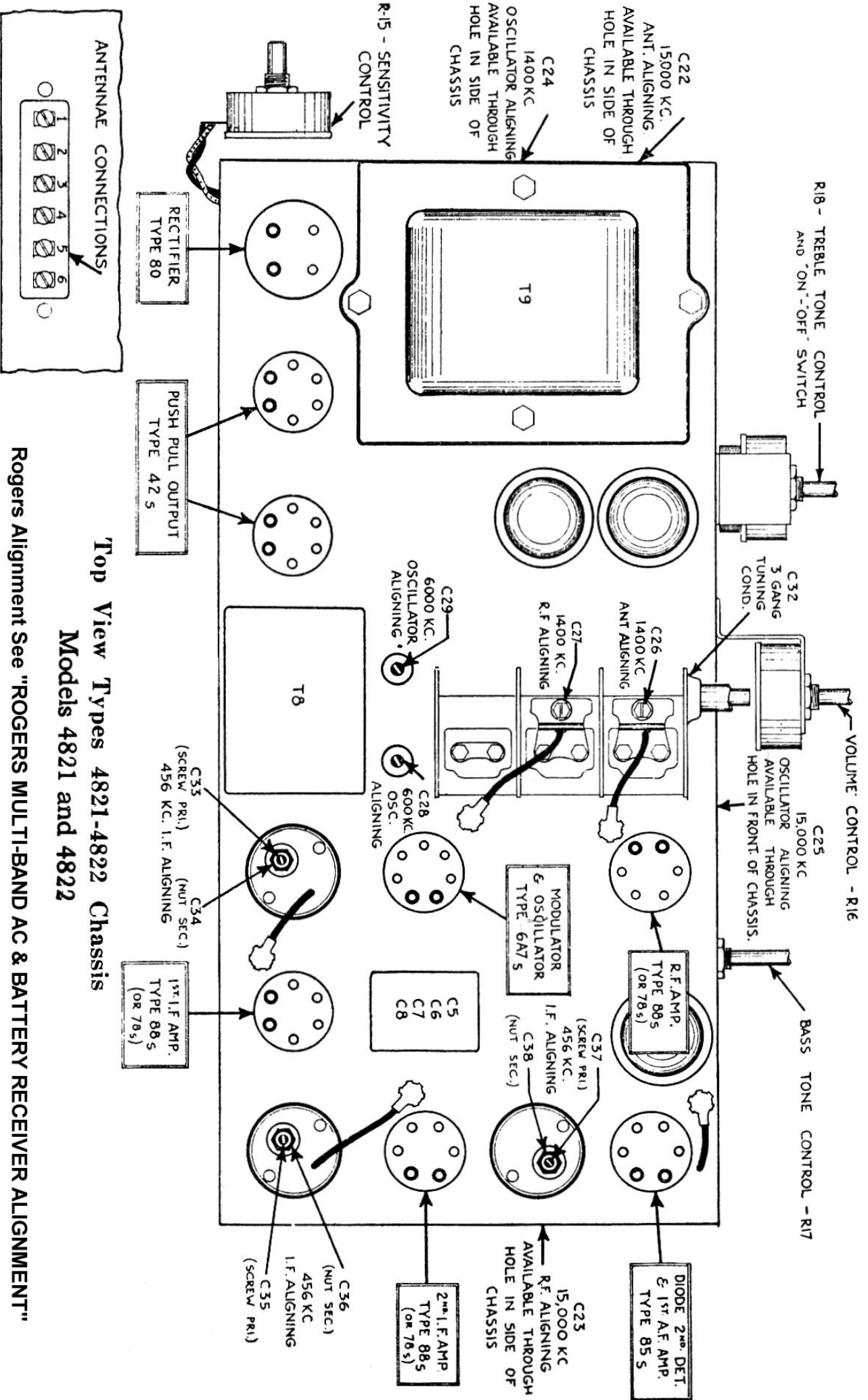


RECEPTACLE FOR RECEIVER FOR CLOCK

VOLTAGES SHOWN ARE APPROX. READINGS THAT SHOULD BE OBTAINED BETWEEN POINTS WHERE VOLTAGE IS INDICATED AND GROUND (CHASSIS), UNLESS SHOWN OTHERWISE. VOLTAGES ARE MEASURED WITH A 1000 OHMS PER. VOLT VOLTMETER USING 250 VOLT RANGE. VOLTAGES MARKED * CHANGE WITH SETTING OF SENSITIVITY CONTROL. VOLTAGES ARE MEASURED WITH SENSITIVITY CONTROL AT MAX.

Schematic Circuit Diagram—Types 4821-4822 Chassis.

NOTE: Type 4822 Chassis identical but includes Stop-Start Clock.
NOTE: In late releases C27 is located on the band switch in chassis.



Top View Types 4821-4822 Chassis
Models 4821 and 4822

Rogers Alignment See "ROGERS MULTI-BAND AC & BATTERY RECEIVER ALIGNMENT"