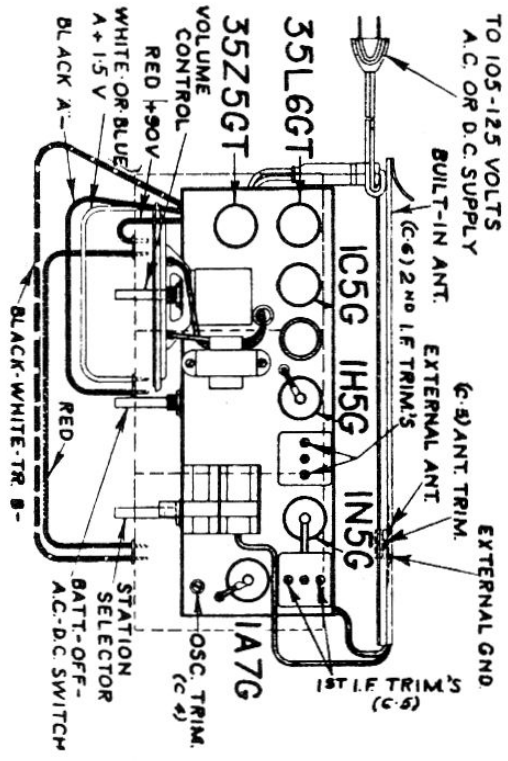


INDICATES CONTACTS CONNECTED THROUGH RIVET.

Rogers 15/60CP - Majestic 4160CP - De Forest CP06/41

Rogers 15/60CP, Majestic 4160CP De Forest CP06/41



AC/DC & Battery Operated Radio

ALIGNMENT — PROCEED IN SEQUENCE LISTED.

	Switch Setting	Dummy Antenna	Connect Generator To	Radio Dial Setting	Generator Frequency	Trimmer Adjusted	Adjustment	Note	Appr. Sensity. For 50 M. W Output
2nd I. F.	Batt.	.1 Mfd.	Grid of 1N5G I. F. Tube	1500 K.C.	455 K.C.	2nd I. F. C-6	Maximum Output		4000 Microvolts
2nd I. F.	Batt.	.1 Mfd.	Grid of 1A7G 1st Converter	Approx. 1500 K.C.	455 K. C.	1st I. F. C-5	Maximum Output		75 Microvolts
Antenna 1460 K. C.	Batt.	400 Ohm	Antenna Terminal	1460 K. C.	1460 K. C.	Ant. C-3	Maximum Output	See Paragraph on Loop Ant. Trimmer Adjustment	12 Microvolts
Oscillator 1460 K. C.	Batt.	400 Ohm	Antenna Terminal	1460 K. C.	1460 K. C.	Osc. C-4	Maximum Output		

Tune to a weak station between 1200 K.C. and 1500 K.C., and adjust the antenna trimmer C3 for maximum output. This will give the best overall results across the Broadcast band. However, if some particular station, which is difficult to receive is desired, it is permissible to adjust the antenna trimmer C3 to a maximum point at that station. If this is done it must be borne in mind that the sensitivity at the other points of the dial may suffer slightly.

NOTE:—When an external antenna is used it is necessary to re-adjust antenna trimmer C3 using the procedure as outlined above. When the external antenna is removed, it is, of course, necessary to adjust this trimmer again.