

OSC. E. MOD.  
**12A8G**

I.F. AMP  
**12K7M**

DETECTOR &  
1<sup>ST</sup> AUDIO AMP  
**12B6G**

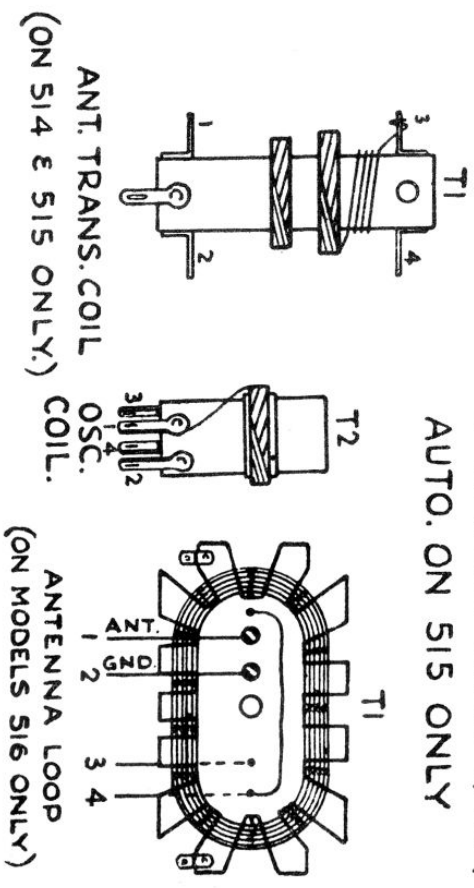
OUTPUT  
**35L6 GT**

RECTIFIER  
**50Z7G**

4 STATION MECH. GANG TUNED  
AUTO. ON 515 ONLY

ON 514 & 516 ONLY

ON 515 ONLY



ANT. TRANS. COIL  
(ON 514 & 515 ONLY.)

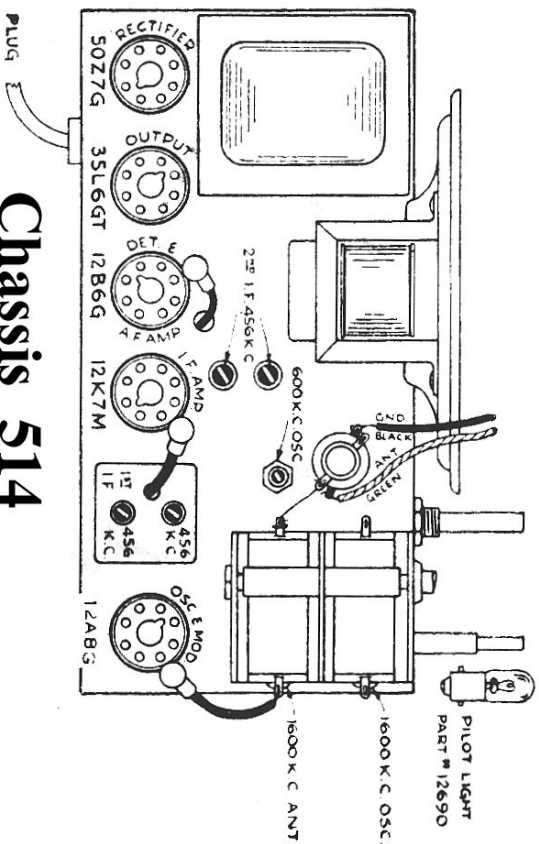
ANTENNA LOOP  
(ON MODELS 516 ONLY)

Note :- VOLTAGE READINGS ARE BETWEEN POINTS  
SHOWN AND CHASSIS (GROUND)  
UNLESS OTHERWISE INDICATED.

SI - ON VOLUME CONTROL.  
MICA CONDENSER CAPACITIES SHOWN  
IN mmfds.

VOICE COIL D.C RESISTANCE 3.8 OHMS.  
FIELD " " " " 400 "  
LINE DRAIN } 115V. - 25 CYCLE - 25 WATTS.  
                  } 115V. - 60 " - 25 "

Rogers 14-50, 14-50A, 14-50P Majestic 950, 950A, 950P  
De Forest "Carlton" "St. Regis" "Traymore"  
(Chassis 9R514, 9R515, 9R516)



**Chassis 514**

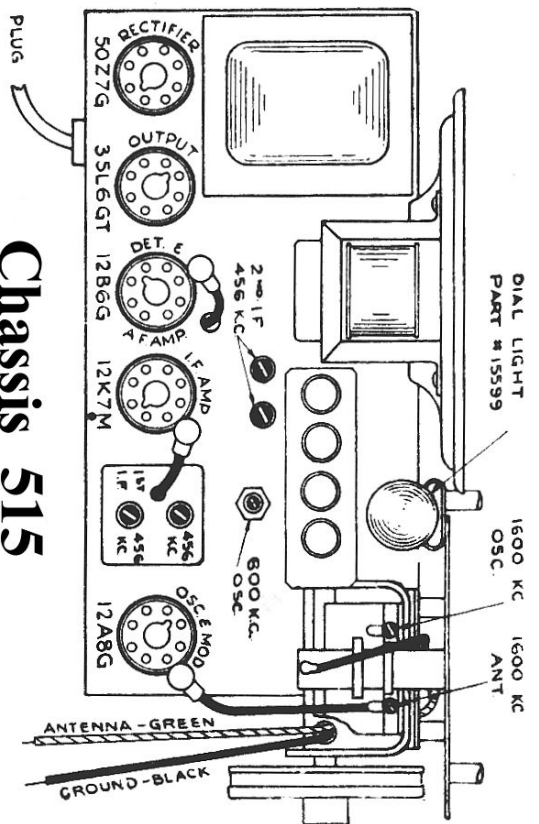
**ALIGNMENT**

I.F.—Short out oscillator section of gang condenser, connect generator through a .1 mfd. condenser to control grid of 12A8G tube (grid cap in position). With generator at 456 kc/s. adjust I. F. trimmers for maximum output.

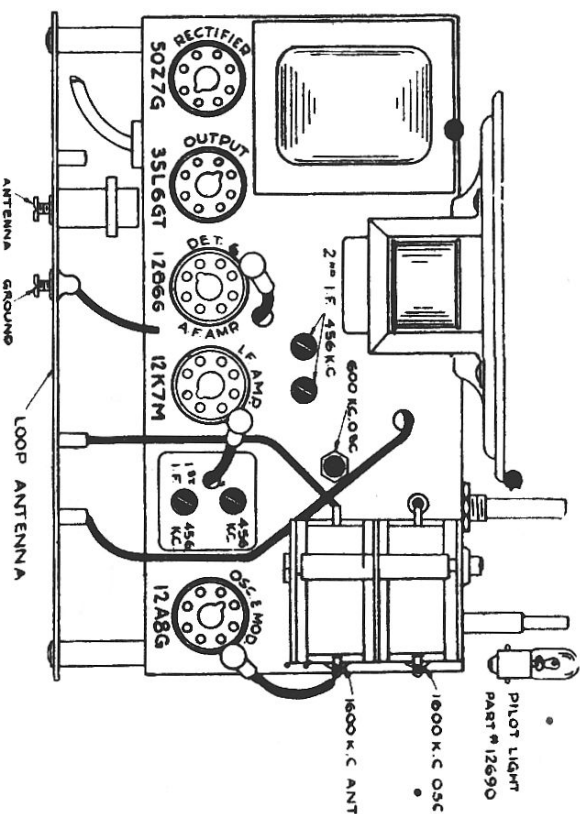
R.F.—Remove shorting link from gang condenser. Apply 1,600 kc. signal to antenna (green) lead. Adjust oscillator and antenna for maximum reading. Reset generator to 600 kc. and adjust oscillator series trimmer for maximum reading. Rock gang during this operation.

Loop Models—Drape generator lead in proximity to loop antenna, adjust to 1,500 kc. and peak oscillator and antenna trimmers for maximum. Adjust 600 kc. oscillator trimmer as above.

**Rogers 14-50, 14-50A, 14-50P Majestic 950, 950A, 950P  
De Forest "Carlton" "St. Regis" "Traymore"  
(Chassis 9R514, 9R515, 9R516)**



**Chassis 515**



**Chassis 516**