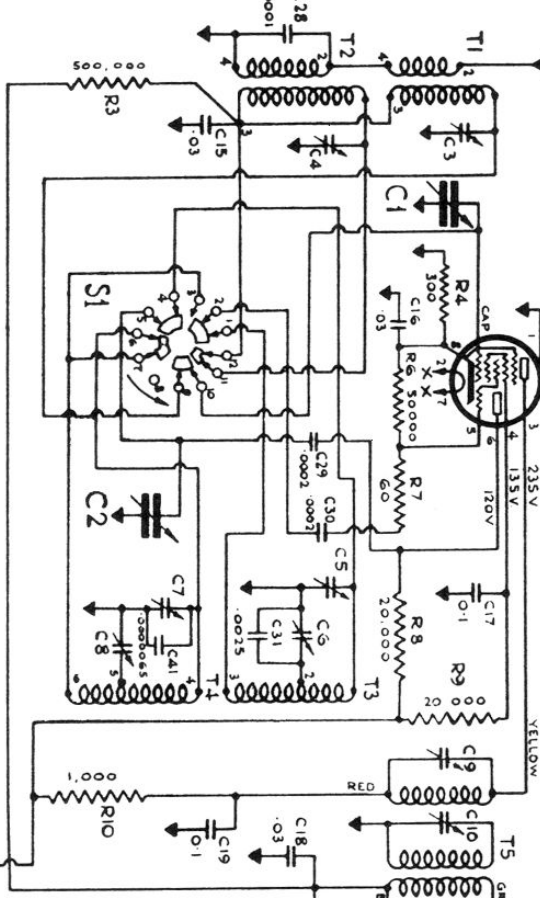
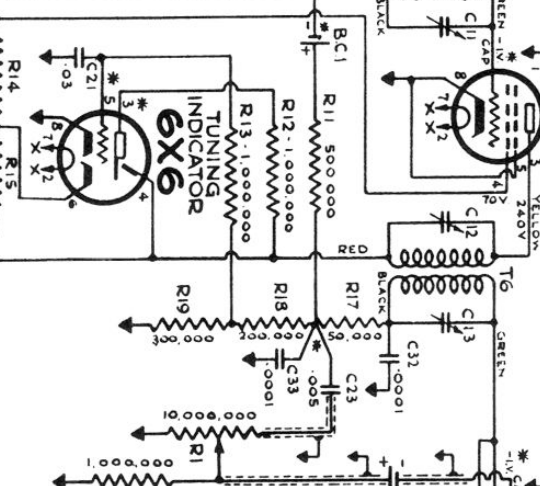


- C3 - 17500 KC ANT ALIGNING
- C4 - 1,600 KC "
- C5 - 17500 KC OSC
- C6 - 6000 KC OSC SERIES ALIGNING
- C7 - 1,600 KC " ALIGNING
- C8 - 600 KC " SERIES ALIGNING
- C9 - 456 KC 1<sup>ST</sup> I.F. ALIGNING
- C10 - 456 KC " " "
- C11 - 456 KC " " "
- C12 - 456 KC 2<sup>ND</sup> I.F. ALIGNING
- C13 - 456 KC " " "

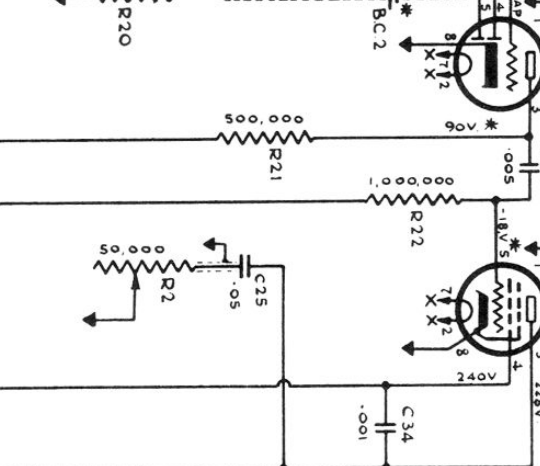
**MODULATOR & OSCILLATOR 6J8M**



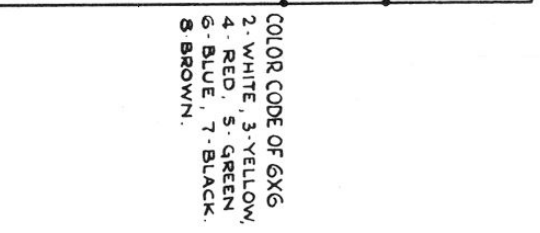
**I.F. AMP. 6K7M**



**DIODE 2<sup>ND</sup> DET. 75M**



**OUTPUT 41M**



- COLOR CODE OF 6X6
- 2. WHITE, 3-YELLOW
  - 4. RED, 5. GREEN
  - 6. BLUE, 7. BLACK,
  - 8. BROWN.

\* VALUES OF RESISTANCE IN CIRCUIT DO NOT PERMIT OF ACCURATE VOLTAGE CHECK. USE PLATE CURRENT AS INDICATION OF PRESENCE OF CORRECT GRID & PLATE VOLTAGE

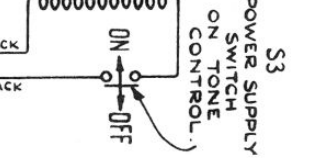
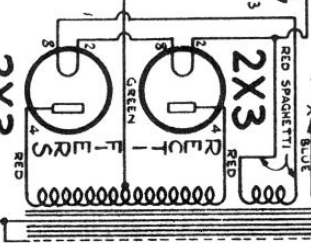
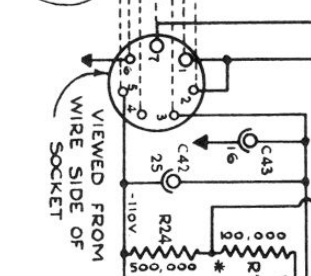
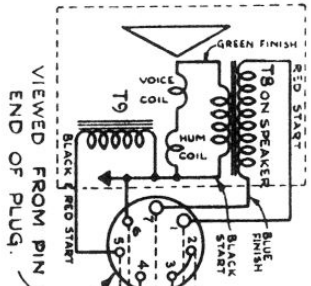
VOLTAGE READINGS ARE BETWEEN POINTS SHOWN AND CHASSIS (GROUND) UNLESS OTHERWISE INDICATED.

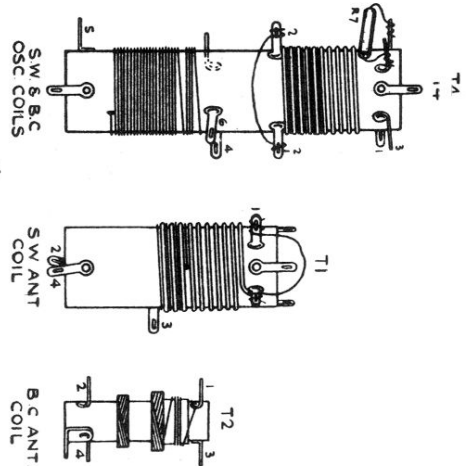
Note - 1. SI BAND SWITCH IS VIEWED FROM REAR OF CHASSIS WITH CHASSIS INVERTED. SWITCH SHOWN IN SHORT WAVE POSITION.

- OBSERVED LINE DRAIN -
- 117 VOLTS - 25 CYCLE - 45 WATTS - .52 AMP.
- 117 " - 60 " - .41 " - .42 "

**Rogers 13-75**  
**Majestic 875**  
**De Forest "Friml"**

- VOICE COIL
- D.C. RESISTANCE
- 1.8 OHMS.
- FIELD COIL
- D.C. RESISTANCE
- 2000 OHMS.





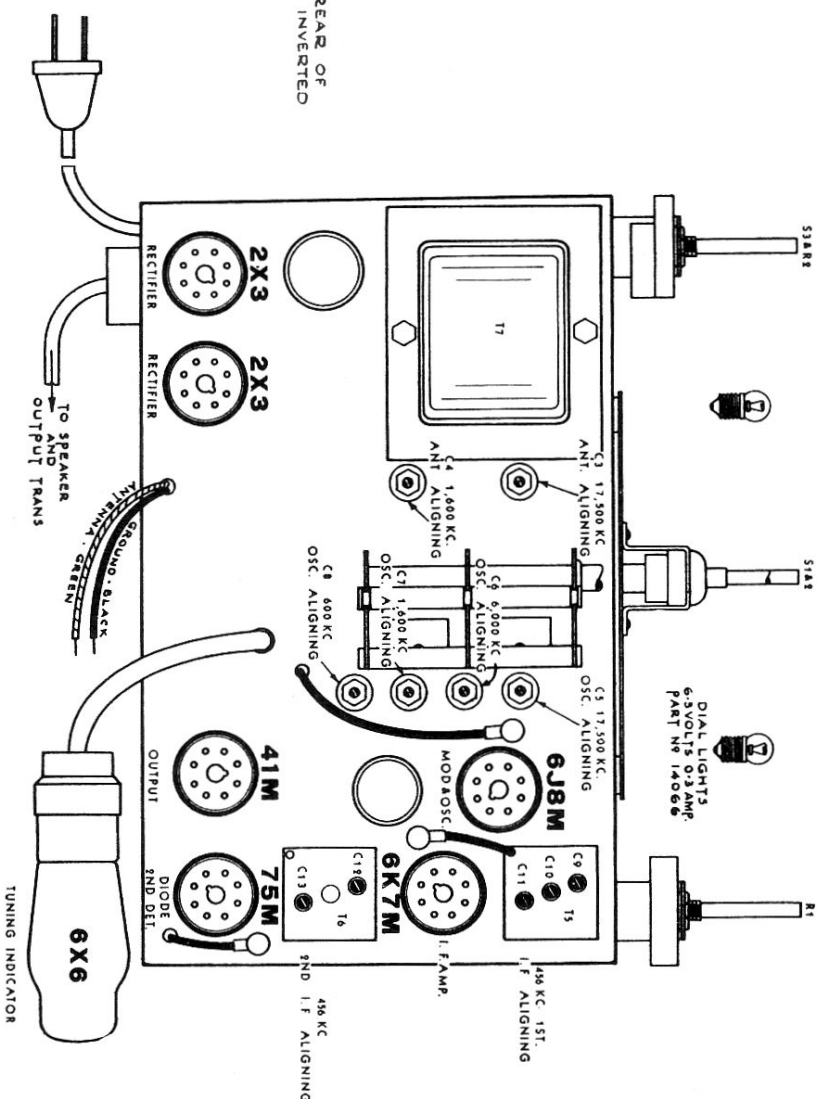
Note:— COILS VIEWED FROM REAR OF CHASSIS WITH CHASSIS INVERTED

# Rogers 13-75 Majestic 875 De Forest "Priml"

## ALIGNMENT DATA—

Operation	Connect Generator	Set Generator Tuning	Set Receiver Tuning	Band Switch	Dummy Antenna	Volume Control	Adjust	Remarks
1	To Grid Cap of 6J8M	456 kc/s.	700-800 kc/s.	Broadcast	.01 mfd.	Max.	C13, C12, C11, C10, C9	To Peak I.F.
2	To Antenna (Green)	1600 kc/s.	1600 kc/s.	Broadcast	.0002 mfd.	Max.	C7	To Peak Osc.
3	To Antenna (Green)	1600 kc/s.	1600 kc/s.	Broadcast	.0002 mfd.	Max.	C4	To Peak Ant.
4	To Antenna (Green)	600 kc/s.	Rock through 600 kc/s.	Broadcast	.0002 mfd.	Max.	*C8	To Peak Osc.
5	To Antenna (Green)	1600 kc/s.	1600 kc/s.	Broadcast	.0002 mfd.	Max.	C7	Recheck C7
6	To Antenna (Green)	17.5 mc/s.	17.5 mc/s.	Short-wave	400 ohms	Max.	C5	To Peak Osc.
7	To Antenna (Green)	17.5 mc/s.	17.5 mc/s.	Short-wave	400 ohms	Max.	C3	To Peak Ant.
8	To Antenna (Green)	6.0 mc/s.	Rock through 6.0 mc/s.	Short-wave	400 ohms	Max.	C6	To Peak Osc.
9								

(See "Antenna Trimmer Adjustment"—Page 13)



NOTE:—Always use an output meter or other visual indicator when making alignment. Use only enough generator output to give readable value on output indicator. The resistors and condensers used as dummy antenna must be non-inductive types.

\*Rock tuning control during this adjustment.