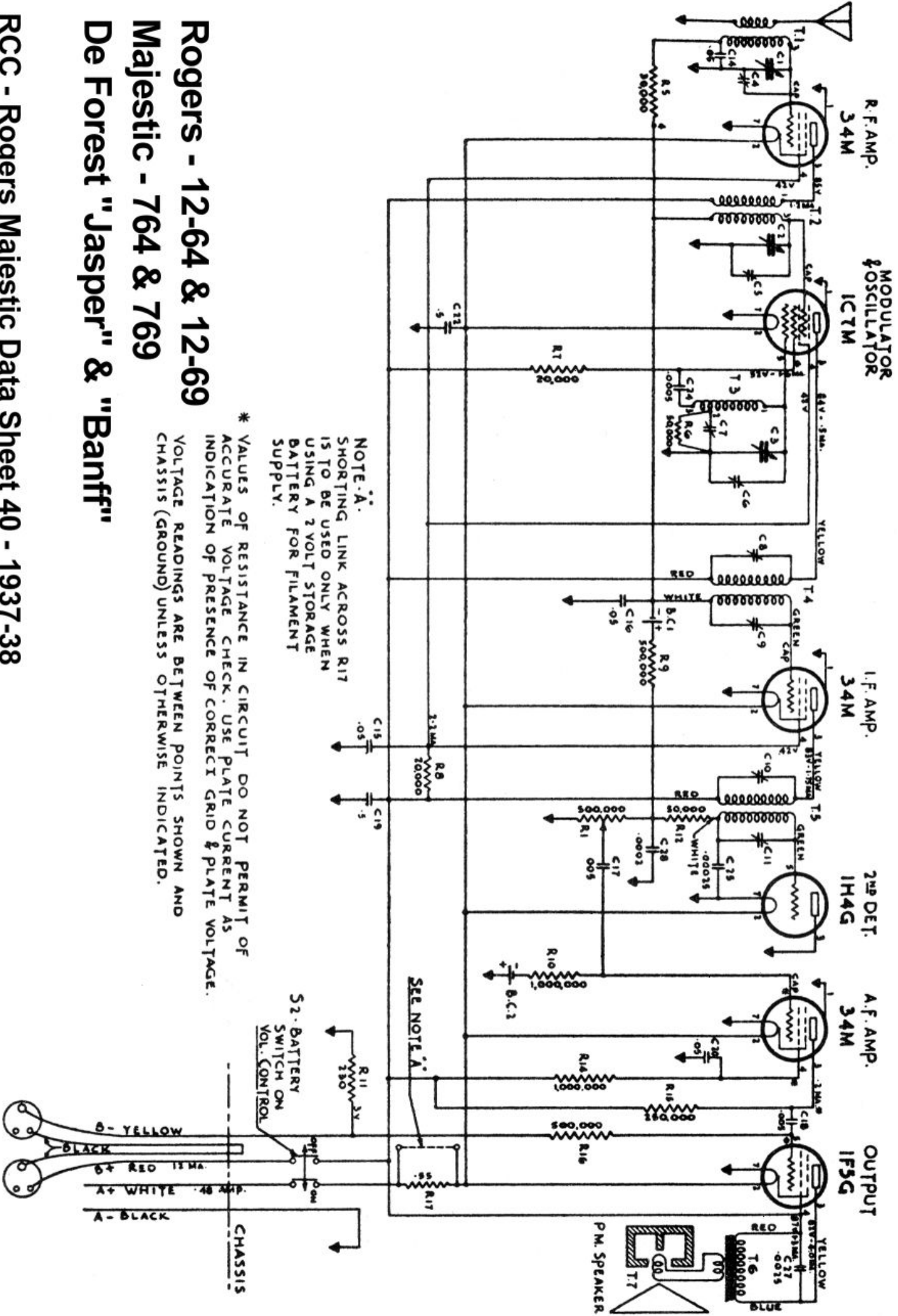
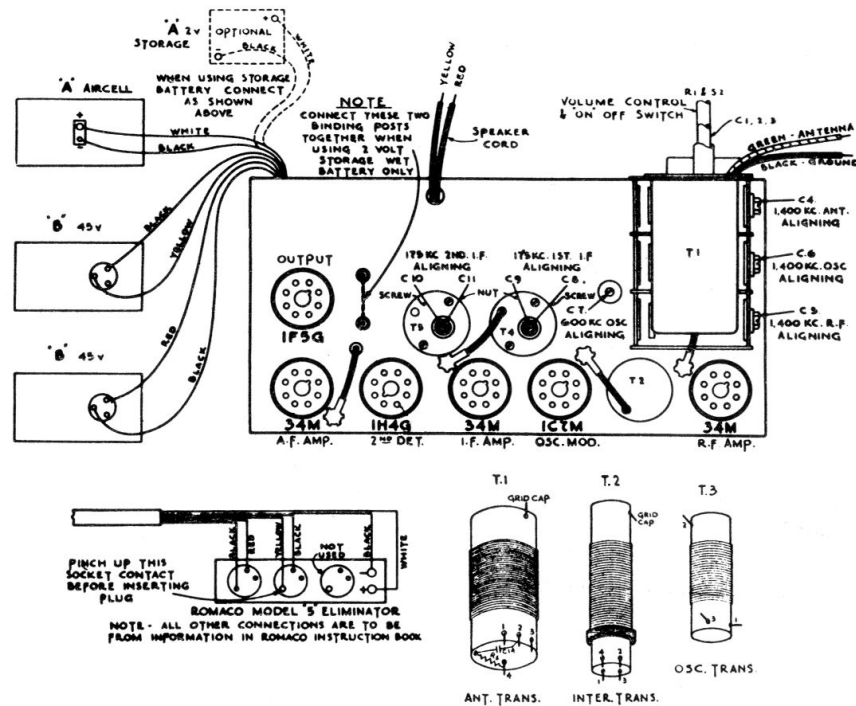


- C 4 · 1400 KC. ANT. ALIGNING
- C 5 · 1400 KC. R.F.
- C 6 · 1400 KC. OSC. ALIGNING
- C 7 · 600 KC.
- C 8 · 175 KC. 1ST. I.F. ALIGNING
- C 9 · 175 KC.
- C 10 · 175 KC. 2ND. I.F. ALIGNING
- C 11 · 175 KC.



**Rogers - 12-64 & 12-69**  
**Majestic - 764 & 769**  
**De Forest "Jasper" & "Banff"**



# Rogers Majestic

Rogers 12-64 & 12-69

Majestic 764 & 769

De Forest Jasper & Banff

Battery Operated Radio

(1) Connect the output lead of service oscillator to the control grid cap of the type 1C7M oscillator-modulator tube, allowing the control grid clip to remain in position.

(2) Turn gang condenser to minimum capacity.

(3) With the service oscillator or signal generator tuned to exactly 175 kilocycles, align in order C11, C10, C9 and C8. As these adjustments are being made, it is particularly important that the output of the signal generator be kept at a low value in order to avoid possible overload of the second detector or output tube. Such overloads if allowed to develop may result in false readings of the output indicator or meter. As the receiver is brought into alignment, the sensitivity will tend, of course, to increase and a gradual reduction of the signal generator output should be made in order to prevent overloading.

(4) Connect output lead of service oscillator to green antenna wire of receiver and ground signal generator to the black wire of the receiver. Remove generator lead from grid of 1C7M tube. Rotate the gang condenser to full-in position and adjust tuning indicator so that pointer indicates exactly 535 kilocycles.

(5) Adjust service oscillator to exactly 1,400 kilocycles and adjust the receiver tuning so that dial pointer indicates exactly 1,400 kilocycles. Align oscillator parallel pad C6, interstage pad C5 and antenna pad C4 for maximum sensitivity.

(6) Tune generator to exactly 600 kc/s. and adjust receiver (without regard for dial calibration) to the generator frequency.

(7) Adjust 600 kc/s. series pad (C7) (without regard for dial calibration) for maximum sensitivity rocking tuning control in the usual manner during this adjustment.

(8) If after this adjustment the dial calibration is incorrect, loosen dial pointer screw and reset pointer to exactly 600 kc/s.

(9) Tune generator to exactly 1,400 kc/s. and adjust receiver in tune. If calibration is incorrect, adjust oscillator parallel condenser (C6) to correct dial calibration, then carefully align antenna (C4), and interstage (C5) trimmers. Recheck C4, C5, C6 in that order for maximum sensitivity.