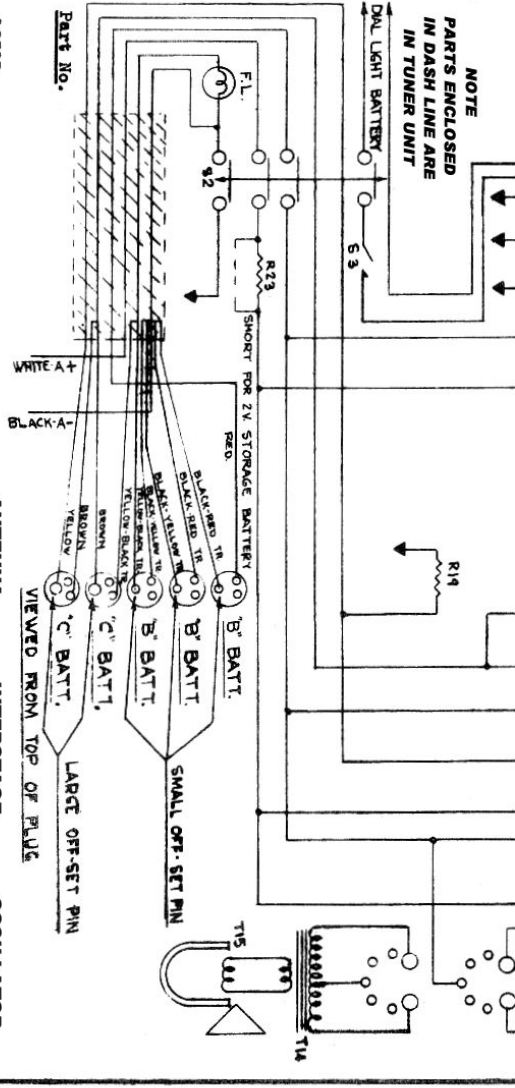
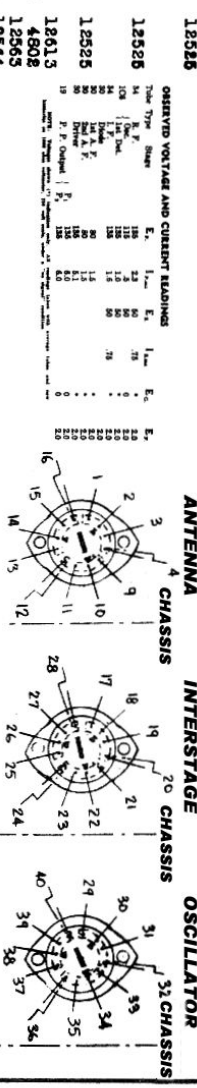


RESISTORS			CONDENSERS			COILS, ETC.		
Item No.	Resistance	Part No.	Item No.	Capacitance	Part No.	Item No.	Name	Part No.
R1	250,000 Ohm V.C.	12611	C16	1st I.F. Pad.	On T11	T1	S.W. Ant. Tran.	5579
R2	1,500,000 Ohm T.C.	15366	C17	1st I.F. Pad.	On T12	T2	P.C. Ant. Tran.	5578
R3	50,000 Ohm	33301	C18	2nd I.F. Pad.	On T12	T3	B.C. Ant. Tran.	5577
R4	50,000 Ohm	33301	C19	2nd I.F. Pad.	On T12	T4	S.W. Int. Tran.	5585
R5	50,000 Ohm	33301	C20	Neutralizing	Twisted Wires	T5	P.C. Int. Tran.	5582
R6	50,000 Ohm	33301	C21			T6	P.C. Int. Tran.	5581
R7	50,000 Ohm	33301	C22			T7	B.C. Int. Pad.	5580
R8	50,000 Ohm	33301	C23			T8	S.W. Int. Pad.	5580
R9	50,000 Ohm	33301	C24			T9	P.C. Osc. Coil	5585
R10	50,000 Ohm	33301	C25			T10	B.C. Osc. Coil	5584
R11	100 Ohm	33311	C26			T11	1st I.F. Tran.	5185
R12	400 Ohm	33310	C27			T12	2nd I.F. Tran.	5183
R13	1,000,000 Ohm	33306	C28	0.10	mf.	T13	Drive Tran.	5598
R14	40,000 Ohm	33317	C29	0.10	mf.	T14	Out. Tran. - On Speaker	5598
R15	100,000 Ohm	33304	C30	0.05	mf.	T15	Com. 10"	5514
R16	100,000 Ohm	33304	C31	0.05	mf.	T16	Mem. 8"	5515
R17	40,000 Ohm	33317	C32	0.01	mf.	T17	R.F. Choke Coil	A.5454
R18	500,000 Ohm	33303	C33	0.03	mf.			
R19	4,500 Ohm	33308	C34	0.10	mf.			
R20	13,000 Ohm	33308	C35	0.01	mf.			
R21	16,000 Ohm	33307	C36	0.01	mf.			
R22	25,000 Ohm	40539	C37	0.005	mf.			
R23	Wire Wound	38806	C38	0.005	mf.			
R24	10,000 Ohm	33318	C39	0.05	mf.			
			C40	0.5	mf.			



CONDENSERS			SWITCHES, ETC.		
Item No.	Capacitance	Part No.	Item No.	Name	Part No.
C1	450 mfd. 60v.	13442	S1	Ant. Trans. Pri. (2nd)	15525
C2	450 mfd. 60v.	13442	S2	Ant. Trans. Sec. (2nd)	15525
C3	450 mfd. 60v.	13442	S3	Int. Trans. Sec. (2nd)	15525
C4	450 mfd. 60v.	13442	S4	Int. Trans. Pri. (1st)	15525
C5	450 mfd. 60v.	13442	S5	Int. Trans. Sec. (1st)	15525
C6	450 mfd. 60v.	13442	S6	Int. Trans. Sec. (Short)	15525
C7	450 mfd. 60v.	13442	S7	Osc. Coil Plate (4th)	15525
C8	450 mfd. 60v.	13442	S8	Osc. Coil Grid (1st)	15525
C9	450 mfd. 60v.	13442	S9	Osc. Coil Grid (2nd)	15525
C10	450 mfd. 60v.	13442	S10	Osc. Coil Grid (3rd)	15525
C11	450 mfd. 60v.	13442	S11	Osc. Coil Grid (4th)	15525
C12	450 mfd. 60v.	13442	S12	Osc. Coil Grid (5th)	15525
C13	450 mfd. 60v.	13442	S13	Osc. Coil Grid (6th)	15525
C14	450 mfd. 60v.	13442	S14	Osc. Coil Grid (7th)	15525
C15	450 mfd. 60v.	13442	S15	Osc. Coil Grid (8th)	15525



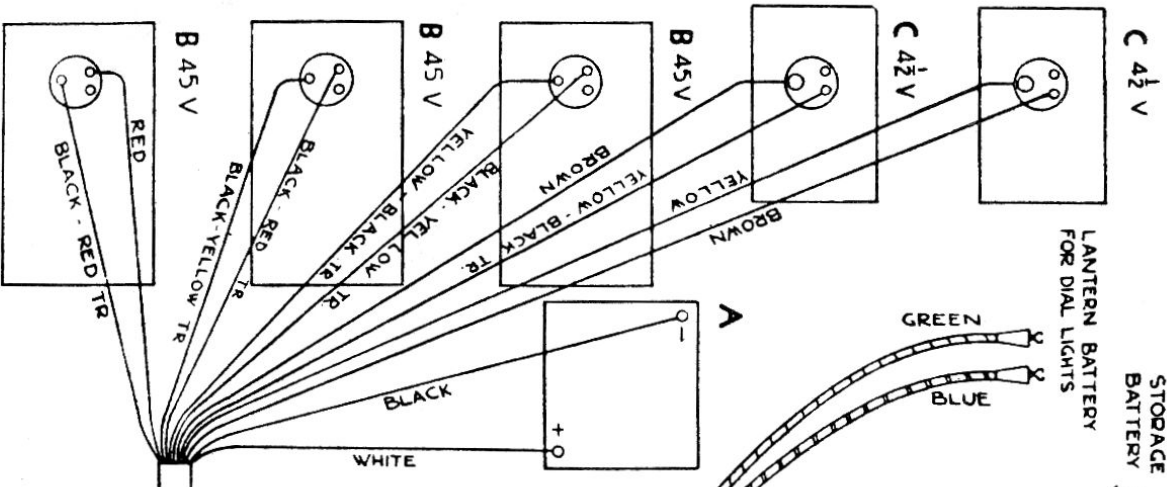
SWITCHES, ETC.		
Item No.	Name	Part No.
S1	Ant. Trans. Pri. (2nd)	15525
S2	Ant. Trans. Sec. (2nd)	15525
S3	Int. Trans. Sec. (2nd)	15525
S4	Int. Trans. Pri. (1st)	15525
S5	Int. Trans. Sec. (1st)	15525
S6	Int. Trans. Sec. (Short)	15525
S7	Osc. Coil Plate (4th)	15525
S8	Osc. Coil Grid (1st)	15525
S9	Osc. Coil Grid (2nd)	15525
S10	Osc. Coil Grid (3rd)	15525
S11	Osc. Coil Grid (4th)	15525
S12	Osc. Coil Grid (5th)	15525
S13	Osc. Coil Grid (6th)	15525
S14	Osc. Coil Grid (7th)	15525
S15	Osc. Coil Grid (8th)	15525



DIAGRAM OF WAVE CHANGE SWITCH CONNECTIONS FROM FRONT OF CHASSIS STANDING ON RIGHT END

NOTE
CONNECT THESE TWO
BINDING POSTS TOGETHER
WHEN USING 2 VOLT
STORAGE WET
BATTERY ONLY

DIAL LIGHTS
G-3 VOLTS 25 AMP
PART NO 12564



"B" Battery Voltage
135

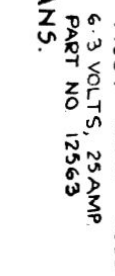
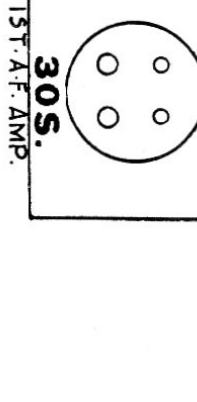
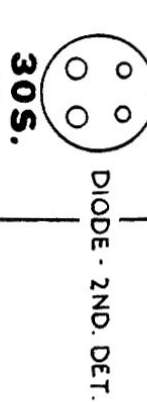
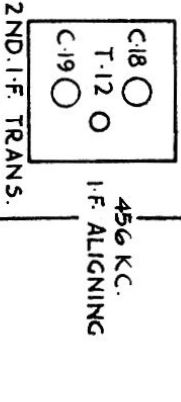
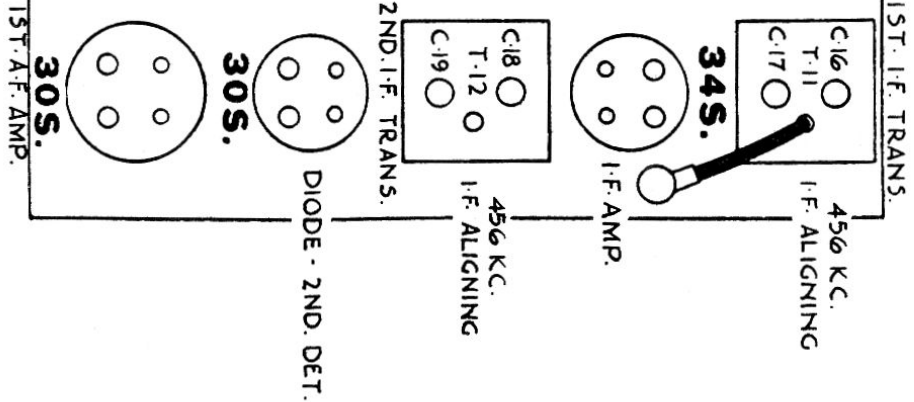
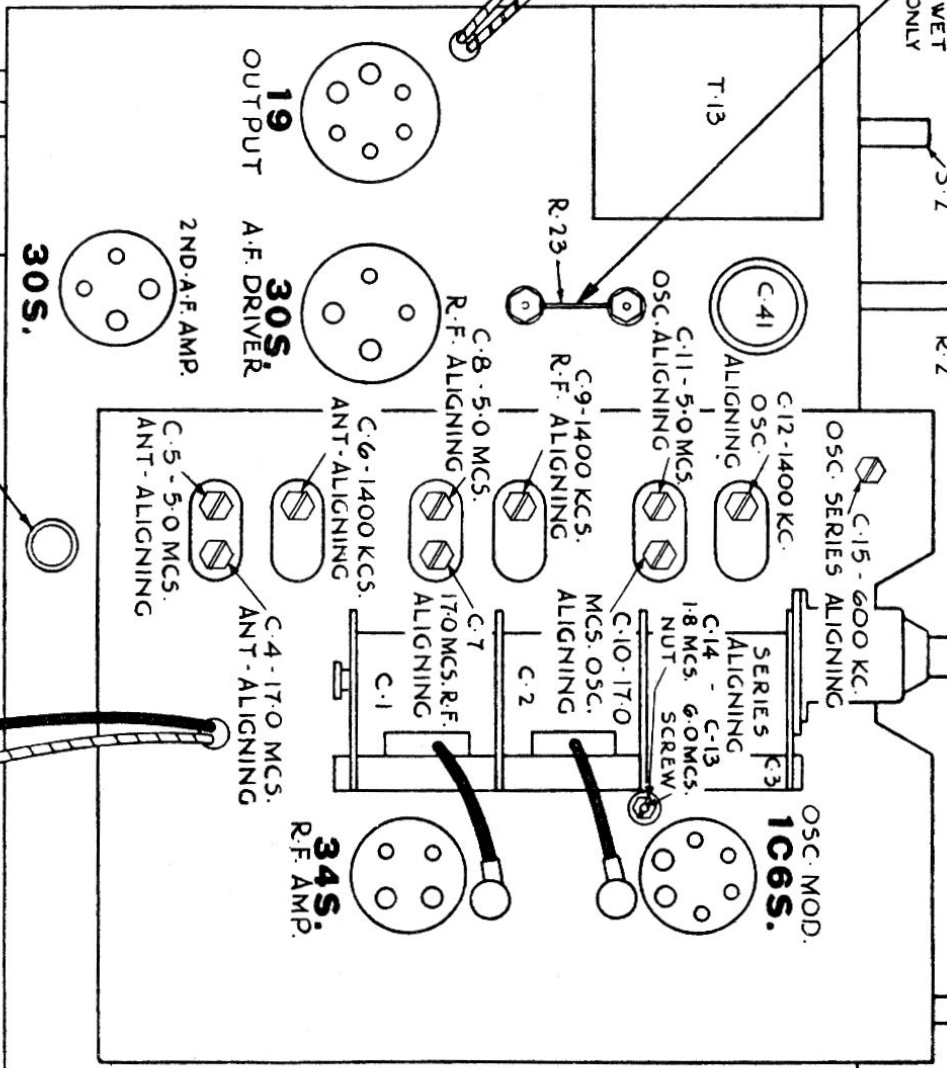
Drain in Milliamperes
19-24

"A" Battery drain (.740 ampere)
740

Pilot Light
6-3 VOLTS, 25 AMP
PART NO 12563

"ELEVEN-28" Model - - - Type 6R871 Chassis
"ELEVEN-18" Model - - - Type 6R872 Chassis

Rogers Alignment See "ROGERS MULTI-BAND AC & BATTERY RECEIVER ALIGNMENT"



FUSE

19-24

740